



WINTER 2023

COMMUNITY CONNECTIONS



Bike Rentals pg. 26
Village of Royal Palm Beach, Florida



COMMUNITY
Connections

TABLE OF CONTENTS

Youth Programs	04
Adult & Senior Programs	08
Young at Heart	11
Special Events	13
Art in Public Places	16
Commons Park Rentals	17
Cultural Center Rentals	22
Village Updates	26

FACILITIES

Contact Information

RECREATION CENTER

100 Sweet Bay Lane, Royal Palm Beach, FL 33411

Phone: 561-790-5124 • Fax: 561-790-5164

Office Hours: Monday - Friday 8:00 AM - 5:00 PM

Building Hours: Monday - Friday 8:00 AM - 9:00 PM

Saturday: 8:00 AM - 5:00 PM

Closed Sundays

Lou Recchio - Director of Parks & Recreation Phone: 561-790-5164

Mike Mikolaichik - Assistant Director of Parks & Recreation Phone: 561-790-5198

Brandon Pendergrass - Recreation Program Supervisor Phone: 561-790-5189

Shakeera Thomas - Senior Program Supervisor Phone: 561-753-1241

Terry Major - Senior & Athletic Programs Coordinator Phone: 561-791-7097

PARKS OPERATION CENTER

11801 Poinciana Boulevard, Royal Palm Beach, FL 33411

After hours phone: 561-284-0017

Rich Wishart - Parks Superintendent Phone: 561-790-3844

Lonnie Pendergrass - Parks Foreman Phone: 561-790-3408

CULTURAL CENTER

151 Civic Center Way, Royal Palm Beach, FL 33411

Phone: 561-790-5196 Fax: 561-753-1158

Building Hours: by appointment only

Steve Poyner - Events & Facilities Manager

Phone: 561-790-5192

Richard Uhler - Program Coordinator

Phone: 561-790-5196

COMMONS PARK

11600 Poinciana Boulevard, Royal Palm Beach, FL 33411

Phone: 561-753-1232

Building Hours: Monday - Friday 8:00 AM - 9:00 PM

Sylvio Pierre-Louis - Events & Facilities Manager

Phone: 561-790-5140

Ashley Turnquest - Program Coordinator

Phone: 561-753-1232



YOUTH PROGRAMS

Youth Flag Football

Ages 5-13

Registration begins in December

Season Begins in March

Games & practices held at
Seminole Palms Park

Karate (American Goju)

Grades K-12

Mondays and Wednesdays

from 6:30 PM - 7:30 PM

at the Recreation Center

Fee: R/\$70 NR/\$85 (Monthly)

Tennis

Ages 5 – 17 at Camellia Park

Tennis instruction for all skill levels.

Contact Daryl Ahrens at 561-320-7746

for information and pricing

Golf

Ages 5 - Adult at Commons Park

Golf instruction for all skill levels.

Contact Glen Beaver at 708-584-0887

for information and pricing

Vivia Taylor Music Program

Ages 5-16

Saturdays at the Recreation Center.

Piano, Voice and Theater private and group lessons taught by a trained professional. Classes raise confidence, concentration, hand-eye coordination, poise and presentation skills. Contact Vivia Taylor at 917-991-5790 for class start times and more information or email viviataaylor@gmail.com

Primary Sports Providers

The following organizations are recognized sports providers for the Village of Royal Palm Beach

Palms West Athletic Association (Football)

561-201-7799

<https://tshq.bluesombrero.com/rpbwildcats>

Royal Palm Beach Soccer, Inc

561-324-0708

www.royalpalmbeachbstrickers.com

Youth Baseball Association of

Royal Palm Beach (Baseball & Softball)

561-876-8091

www.baseballrpb.com

Royal Palm Beach Stars (Travel Basketball)

561-556-7828

www.royalpalmbeachstars.org



For Pricing Purposes

R = Resident of Royal Palm Beach NR = Non Resident



OUTH PROGRAMS

Register Now For All Programs

Early Childhood Adventures

Ages 3 to 5

Recreation Center

Early Childhood Adventures is a licensed part time Preschool. The only requirement to attend is that your child is fully potty trained. Call our office at 561-790-5114 or visit our website at <http://www.EarlyChildhoodAdventures.net> to set up a tour or to get more information.

We are currently enrolling for the following classes:

- VPK – Begins in August (free with voucher, limited availability)
- Morning and Afternoon Preschool
- Summer Preschool Camp
- Summer Kindergarten Bootcamp
- Drop-In Days

Petite Academy of Dance

Ages: 2-13 (classes vary by age)

Recreation Center

(fees may vary depending on class)

Quality studio dance instruction that sets out on a magical journey to discover dance through music, movement and the imagination. See full class descriptions for details on each class. Register now for upcoming sessions. Contact Miss Charlene at tinytoesdance@aol.com for more information.

Amazing Athletes

Ages 3-5

Recreation Center

Fee: R/\$95 NR/\$125 (7 week sessions)

Saturdays from 9:00 AM to 10:00 AM

Amazing Athletes is the premier year-round, multi-sport developmental fitness program empowering children to reach developmental milestones at an individual pace.

Contact Brittany Bennett at 561-866-1640 for more information.

Super Soccer Stars

Ages 18mo – 6

Recreation Center

Fee: R/\$150 NR/\$175 (6 week sessions)

Thursdays 5:30 PM - 6:30 PM

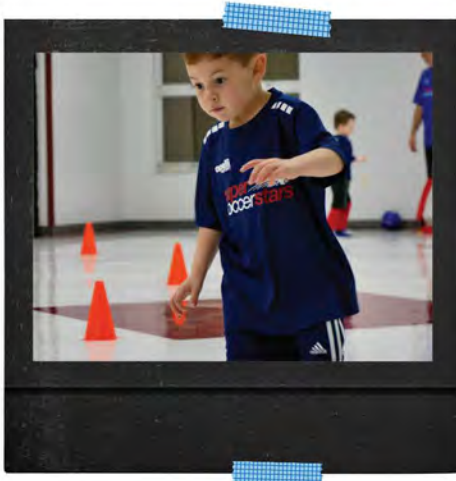
and 6:30 PM to 7:30 PM

Children will improve their soccer skills and develop self-confidence while improving gross motor skills and socialization skills in a fun, noncompetitive and educational environment. Contact Brittany Bennett at 561-866-1640 for more information.





**DON'T FORGET
TO TAKE PHOTOS!**



YOUTH CAMPS

Summer Day Camp

Ages: 5 - 13

Monday - Friday from 7:00 AM - 5:30 PM

Register in person at the Recreation Center

Session I: June 5th – June 16th

Session II: June 19th - June 30th

Session III: July 3rd - July 14th

Session IV: July 17th – July 28th

Fee: R/\$245 per session NR/\$270 per session
(a one time registration fee of \$60 will apply)



Camp is held in 2 week sessions throughout the summer. Some of the daily activities include bowling, swimming, art, athletics, talent show performances and field trips. After-Care will be available from 5:30 PM - 6:00 PM (\$1 per day)

Specialty and Sports Academy Camps

Ages 4 - 14

Register in person at the Recreation Center

Camps are held on weekdays throughout the summer.

Activities include volleyball, basketball, fishing, flag football and more.

Call 561-790-5124 for information and pricing.



ADULT & SENIOR PROGRAMS

ADULT BASKETBALL LEAGUE

Games Played on Sunday Mornings
Recreation Center
Fee: R/\$500 per team NR/\$525 per team
First 10 teams to register are in the league.
Register now for league play
that begins in March

ADVANCED KARATE (AMERICAN GOJU)

Mondays and Wednesdays
7:30 PM - 8:30 PM at the Recreation Center
Fee: R/\$70 NR/\$85 (Monthly)

TOTAL BODY CONDITIONING

Mondays from 6:15 PM- 7:15 PM
Wednesdays from 6:15 PM - 7:15 PM
Saturdays from 9:00 AM - 10:00 AM
Recreation Center
Fee: R/\$40 NR/\$50 (8 week sessions)
An aerobic workout with weight training
and abdominal core work.

YOGA

Mondays from 6:00 PM - 7:00 PM
Wednesdays from 9:45 AM - 10:45 AM
Recreation Center
Fee: R/\$48 NR/\$58 (6 week sessions)
Reduce stress and improve
flexibility, balance and strength.

ADULT FLAG FOOTBALL LEAGUE

Games Played on Wednesday Evenings
Seminole Palms
Fee: R/\$500 per team NR/\$525 per team
First 10 teams to register are in the league.
Register now for league play that begins in
March

PICKLEBALL

Now - May
Monday - Friday from 9:00 AM - 1:00 PM
Recreation Center
Fee: R/\$20 NR/\$25
Indoor Pickleball is played in the gymnasium
with a racquet and whiffle ball.
It is a low impact activity that is fun for all ages.

FITNESS ROOM MEMBERSHIP (16 & OLDER)

Membership: Now - December 31
Recreation Center

	Resident	Non-Resident
Individual:	\$70.00	\$85.00
Family (Max of 3):	\$95.00	\$115.00
Daily:	\$2.00	\$2.00

OIL AND ACRYLIC ART CLASS (18+)

Mondays from 1:00 PM - 3:00 PM
Recreation Center
Fee: R/\$30 NR/\$40 (6 week sessions)
Perfect for all levels. Learn techniques that will
help you develop your skills and express your
ideas and creativity.

R = Resident of Royal Palm Beach
NR = Non Resident

Scan the QR Code for daily content:



For more information, or to register for
any of the adult and senior programs,
please visit the Recreation Center at
100 Sweet Bay Lane,
Royal Palm Beach, FL 33411
or call 561-790-5124

SENIOR PROGRAMS

Senior Chair Yoga (50 & Older)

Mondays from 3:00 PM – 3:45 PM

Recreation Center

Fee: R/\$50 NR/\$60 (6 week sessions)

Lower blood pressure, increase flexibility, improve balance and strengthen muscles

Senior Clubs

Recreation Center

Call 561-753-1241 to learn about joining a senior club such as writing, book, knitting & crocheting, quilting and embroidery clubs

Senior Meal Site Program (60 & older)

Recreation Center

Free lunch served **Monday through Friday** at 12:00 PM by the Division of Senior Services (DOSS). Call 561-753-1241 and ask to complete the mandatory form to participate

Senior Technology Workshops

Tuesdays

3:30 PM – 5:00 PM

Recreation Center

This free workshop will teach you how to navigate your mobile device and/or tablet, participants must be 55 years or older and register.

Senior Activity Program (55 & Older)

Monday - Friday from 11:00 AM – 3:00 PM

Recreation Center

Free program with activities such as Rummikub, Mahjong, Mexican Train, Clue, Sequence, Rack-O, Prize Bingo, Pokeno, movie days, themed parties and more.

To register, or for more information call the Recreation Center at 561-753-1241.

Tai Chi (60 & Older)

Tuesdays & Thursdays

January 10 – June 1 from 1:00 PM - 2:00 PM at the Recreation Center.

Register now if you're looking for a way to reduce stress. Tai Chi is sometimes described as "meditation in motion" because it promotes serenity through gentle movements.

AARP Driving Course

Last Tuesday of the month

January - May 9:00 AM - 3:00 PM

Fee: AARP Member \$20, nonmember \$25

Become a safer & more confident driver! You will learn about skills and strategies you can use on the road, discover defensive driving techniques to help you deal with aggressive drivers, explore local laws and traffic rules, and get tips for proper maintenance of your vehicle so it's safe before you drive!

For more information, or to register for any of the adult and senior programs, please visit the Recreation Center at
100 Sweet Bay Lane,
Royal Palm Beach, FL 33411
or call 561-790-5124



R = Resident of Royal Palm Beach NR = Non Resident

SENIOR ACTIVITY SOCIALS

SPRING/SUMMER 2023

2023 will see the return of **SENIOR ACTIVITY SOCIALS!**
All activity socials are held separately from Young at Heart
and are open to all age 50 and older.

Contact the Recreation Center at 561-790-5124
for more information regarding these great events.

Tuesday, February 14th
Valentine's Day Party



Tuesday, March 14th
St. Patrick's Day Social



Friday, May 26th
Senior Citizen Prom

Friday, June 30th
Ice Cream Social



Hello Young at Heart Members,

I'd like to wish you all a very happy, healthy and safe New Year. The hope is that we will see continued growth in the Young at Heart Club and in local businesses and restaurants in the upcoming year. We are eager to reunite with our dear friends and are thrilled about the opportunity of making new friends that join our club. I look forward to seeing all of you and am excited about the programs and events that are planned for the Young at Heart Club in the near future.

Keep smiling,
Sandy Rubin
President of Young At Heart

ABOUT

Established in 1990, the Young at Heart Club is a non-partisan, non-political, body sponsored by The Village of Royal Palm Beach Recreation Department.

PURPOSE

To plan and implement leisure time activities that meet the interests and needs of its members.

To keep members informed about social and wellness issues and public policies that affect them.

To provide, if requested, volunteers from among the membership to assist with various Village community services.

CLUB

Monthly Luncheons are held the 1st Friday of each month

Monthly business meetings are held the 3rd Wednesday of each month at 10:00 AM. A presentation on various topics will follow a free continental breakfast each meeting.

HIGHLIGHTS

Trip to Cape Canaveral arranged by Best Group Trips.



YOUNG AT HEART



BREAKFAST BUSINESS MEETINGS

- February 15th
- March 15th
- April 19th
- May 17th

Always held the 3rd Wednesday of the month at the Royal Palm Beach Recreation Center
100 Sweet Bay Lane
Royal Palm Beach, FL 33411
10:00 AM - 12:00 PM

SENIOR REFERRAL PROGRAM

Every Thursday 1:00 PM – 3:00 PM
Royal Palm Beach Recreation Center
Phone: 561-790-5188

The focus of the Senior Referral Program is to provide a comfortable, caring environment for clients to request help, assistance in determining which services might best fit the specific need or concern for a specific situation, to have a volunteer available to work with the client through their concern, and to follow-up as needed with the client and/or helping agency (with the clients permission) to ensure a suitable solution.

LUNCHEONS

Friday, February 3

Theme: wear Red
Entertainment: Cande Rivers
Motown Diva Tribute
Entrée: Stuffed Chicken Breast

Friday, March 3

Theme: wear Green
Entertainment: DJ Charlie
Country Music/Line Dancing
Entrée: Corn Beef & Cabbage

Friday, April 7

Theme: wear Yellow
Entertainment: Calypso/Steel Drums
Entrée: Beef Stroganoff

Friday, May 5

Theme: wear Green & Pink
Entertainment: Mariachi Band
Entrée: Chicken/Steak Fajitas

Friday, June 2

Theme: wear Red & Blue
Wayne L. Comedy Dance & Party
Entrée: Pulled BBQ Beef



SPECIAL EVENTS

GREEN MARKET AND BAZAAR

SATURDAYS OCTOBER – APRIL 29

LOCATION: VILLAGE HALL FROM 9:00 AM - 1:00 PM

Spend time outdoors with family and friends while strolling the lakeside market vendors and merchants. Support your community by shopping for locally grown plants and organic products including a wide selection of produce ranging from fruits and vegetables, herbs, spices and fresh flowers to everyday favorites like fresh baked goods and local honey. You can also enjoy a compliment of Artisan and Vegan foods, pastries and a unique selection of artists and crafters selling jewelry, handicrafts and other interesting wares. For more information or to become a vendor visit <https://www.rpbgreenmarket.com/>.



MOVIE NIGHT & FOOD TRUCK EXPO

FEBRUARY 11

FOOD TRUCKS: 5:00 PM

SHOWTIME: 7:00 PM

LOCATION: COMMONS PARK

Bring your chair and blankets for a night under the stars enjoying a movie and good eats on the Great Lawn at Commons Park. For more information visit www.royalpalmbeachfl.gov or call 561-753-1232.



SPECIAL EVENTS

CONCERT NIGHT & FOOD TRUCK EXPO

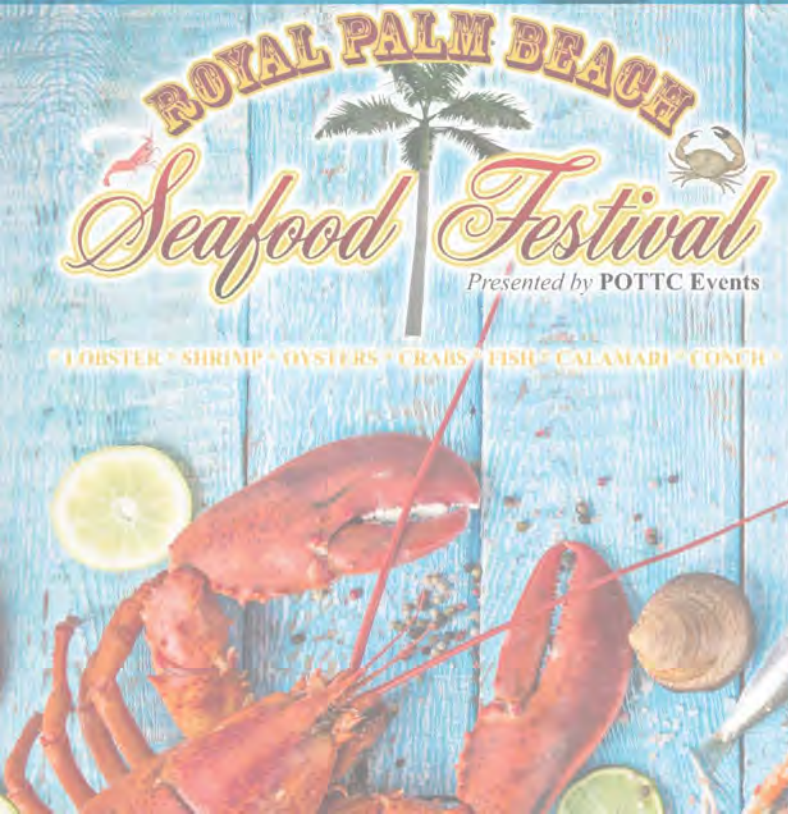
Held every 1st & 3rd Friday at 5:00 PM at Commons Park. Enjoy great food and entertainment. The Food Truck Expo will begin at 5:00 PM followed by a live performance at 7:00 PM. For more information, visit www.royalpalmbeachfl.gov or call 561-753-1232.



February 17th-19th
Friday 5 PM - 10 PM
Saturday 1 PM - 9 PM
Sunday 1 PM - 6 PM

Location: Commons Park

West Fest is Back! Join us at Commons Park for our 3-day country themed event which includes a free kids fun zone, food truck expo, craft vendors, elite entertainment and much more. For more information visit www.royalpalmbeachfl.gov or call 561-753-1232.



Saturday, March 18th 11:00 AM - 8:00 PM
Sunday, March 19th 11:00 AM - 6:00 PM
Location: Commons Park

Join us for some of the freshest Seafood in South Florida and to enjoy a diverse variety of delectable dishes. The Seafood Festival will also play host to great live entertainment, exciting exhibits, an assortment of arts and craft vendors, pirates, mermaids and "Ships", a kids' fun zone, plus so much more.

To become a vendor or for more information, visit www.royalpalmbeachseafoodfestival.com.

SPECIAL EVENTS

MEMORIAL DAY

Monday, May 29 at 9:00 AM at Veterans Park

Join the Village of Royal Palm Beach and American Legion Post 367 in our annual Memorial Day Observance. The community based event will include a flag-raising ceremony followed by motivational presentations. Enjoy free refreshments and a live musical performance provided by the Royal Palm Beach Community Band. For more information visit www.royalpalmbeachfl.gov or call 561-790-5196.



JULY 4TH MAYOR'S GOLF TOURNAMENT

Monday, July 4th at 8:00 AM Madison Green Country Club

The scramble format tournament will begin with a shotgun start at 8:00 AM. The tournament will include 50/50 raffles, prizes, longest drive contest, closest to the pin contest and a lunch. Golfers are asked to pre-register at the Royal Palm Beach Recreation Center. All proceeds will benefit the Royal Palm Beach Scholarship Fund. For more information visit www.royalpalmbeachfl.gov or call 561-790-5124.



JULY 4TH SPECTACULAR

Tuesday, July 4th from 1:00 PM to 10:00 PM Commons Park

Festivities begin with our Mayors Cup Golf Tournament at Madison Green Country Club and continue at Commons Park with our annual sand volleyball tournament. The event will also include kayaking, paddle boarding, a free kids fun zone, a cornhole tournament, a ladder golf tournament, a gourmet food truck expo, craft vendors, elite entertainment, a Zambelli Fireworks display and much more. For more information visit www.royalpalmbeachfl.gov or call 561-753-1232.



OTHER EVENTS...

COMMUNITY BAND CONCERTS

February 7th, March 28th & May 16th
Community Band concerts are held at the Cultural Center and begin at 7:00 PM. They are free to the public. Refreshments will be provided. For more information call 561-790-5196.

COMMUNITY YARD SALE

Sunday, April 2
from 9:00 AM - 1:00 PM
Village Hall
Enjoy great selections at affordable prices with a surplus of vendors all in one location. For more information or to become a vendor, visit www.royalpalmbeachfl.gov or call 561-790-5196.

CULTURAL DIVERSITY DAY

Date TBD
from 1:00 PM - Sunset
Veterans Park
Join the Caribbean American for Community Involvement (CAFCI) organization and celebrate our diverse cultures. Enjoy a variety of entertainment, food, history, fashion, arts, and cultural programs. For more information call 561-790-5196

ART IN PUBLIC PLACES

Chances are, if you've driven by the intersection of Okeechobee Blvd. and Royal Palm Beach Blvd. you've seen one of the Village's main public art pieces. In 2018, the Royal Palm Beach Village Council approved its first Art in Public Places Ordinance, aiming to enhance the quality of the visual environment in the Village. Much like nearby municipalities with robust public art programs, the Village is moving towards infusing visual arts intentionally, through a vetted process that aligns with the Village's vision and mission. The Art in Public Places ordinance applies (1) one percent of vertical construction costs by private developments and capital projects to be required for the acquisition of permanent public art. Specifically, the requirement applies only to projects whose one percent costs would equal \$25,000 or more.

Examples of public art are already apparent within the Village. Veterans Park, which includes bronze statues and beautiful memorials commemorating those who served, along with a range of amenities from the amphitheater, interactive fountain, and waterfalls, has brought an atmosphere of charm and serenity to the Village for decades. Additionally, on the corner of Okeechobee Blvd. and Royal Palm Beach Blvd. the aforementioned large palm frond sculptures created by artist Mark Fuller, celebrate the 50th anniversary of the Village, growing from 11 to 38,000 residents over the years.



Today, the Art in Public Places Ordinance applies to the Cultural Center. Currently, the Cultural Center needs a public art piece to satisfy the Art in Public Places Ordinance after the center underwent expansions and improvements in 2019. With the (1) one percent funding, Village Staff has allocated funding for public art and is in the process of evaluating an artist to create unique work of art for the community.

Creating original artworks from leading artists is an exciting task for the new program, as well as facilitating the acquisition of public art by private developers. In accordance with the Art in Public Places Ordinance, public art aims to enhance the quality of life and raise the level of citizen awareness of the importance of aesthetic experiences in their everyday lives. Additionally, with new and redevelopment projects happening throughout the community, it would be no surprise to find striking new visual artworks appearing across the Village in the near future.

-Mario Lopez Pisani

Public Art Professional



COMMONS PARK Rental Facility



BIKE TRAIL RODEO

Saturday, March 25th at 9:00 AM

Location: Commons Park

Celebrate Bike Month in March with a free Bike Trail Rodeo. This family event is a perfect opportunity for all ages to participate in a beginner, intermediate, or advanced (bike ride on the pathways in Royal Palm Beach and Commons Park. In addition to the bike trail ride, the PBSO volunteer unit will be conducting a Bike Rodeo to promote bike safety. For details visit www.royalpalmbeachfl.gov or call 561-753-1232.

OTHER EVENTS... **PARKS & RECREATION MONTH**

Saturday, July 23rd

Location: Commons Park

Celebrate Parks and Recreation month with our free event that will include waterslides on the Great Lawn, an interactive DJ, a food truck expo, kayaking, paddleboarding, a woofapalooza at the dog park and more. For more information visit www.royalpalmbeachfl.gov or call 561-753-1232.

COMMONS PARK



WEEKDAY RATES

Monday-Friday — 9am-11pm

	Resident Not-For-Profit	Non-Resident For-Profit	Minimum Hours
Sporting Center Banquet Room Veranda seats 150	\$100	\$150	2hrs
Outdoor Banquet Garden	\$50	\$100	2hrs

All rates listed are hourly unless otherwise noted. For non-profits, the resident rate applies. For all other organizations, the non-resident rate applies.

Wedding/Party Package

Banquet Room, Outdoor Banquet Garden and Wedding Pavilion	\$800	\$1,200	All Day
---	-------	---------	---------

DAMAGE DEPOSIT: \$500

*Set-up and clean-up times are included in the rental time. Tax not included in price shown.

WEEKEND RATES

	Resident Not-For-Profit	Non-Resident For-Profit	Minimum Hours
Sporting Center Banquet Room Veranda seats 150	\$150	\$200	6hrs (9am-3pm or 5pm-11pm)
Outdoor Banquet Garden	\$75	\$150	6hrs (9am-3pm or 5pm-11pm)

**Booking deposit of 50% of the rental cost is due in order to make the reservation.

***Additional hour until 12am can be added to the rental time at the hourly rate.

Wedding/Party Package

Banquet Room, Outdoor Banquet Garden and Wedding Pavilion	\$1,500	\$2,000	All Day
---	---------	---------	---------



COMMONS PARK



COMMONS PARK



PAVILION

All Day Rental Price

	Resident Not-For-Profit	Non-Resident For-Profit
Small Pavilion seats 8-16	\$50	\$100
Large	\$100	\$200
Pavilion seats 32-40		

When considering a venue for your next event, check out one of our 20 plus pavilions that border the great lawn, playgrounds and splash pad at Royal Palm Beach Commons Park.

To rent our pavilions please visit www.royalpalmbeachfl.gov and go to the Royal Palm Beach Commons webpage
 Or visit the Sporting Center at Commons Park
 11600 Poinciana Blvd | Royal Palm Beach, FL 33411
 561-790-5140 or 561-753-1232

COMMONS PARK UNLIKE ANY OTHER PARK

It features a 10-acre great lawn, sporting center, banquet garden, wedding pavilion, interactive fountain, 20 plus picnic pavilions, playgrounds, volleyball courts, driving range, putting course, short game practice area, kayaking and so much more!



CULTURAL CENTER



Special Occasions

AT THE VILLAGE OF ROYAL PALM BEACH
CULTURAL CENTER



CULTURAL CENTER



HALF BANQUET ROOM



MEETING HALL

Events and Meetings

The Colony Room (600 sq. ft.)

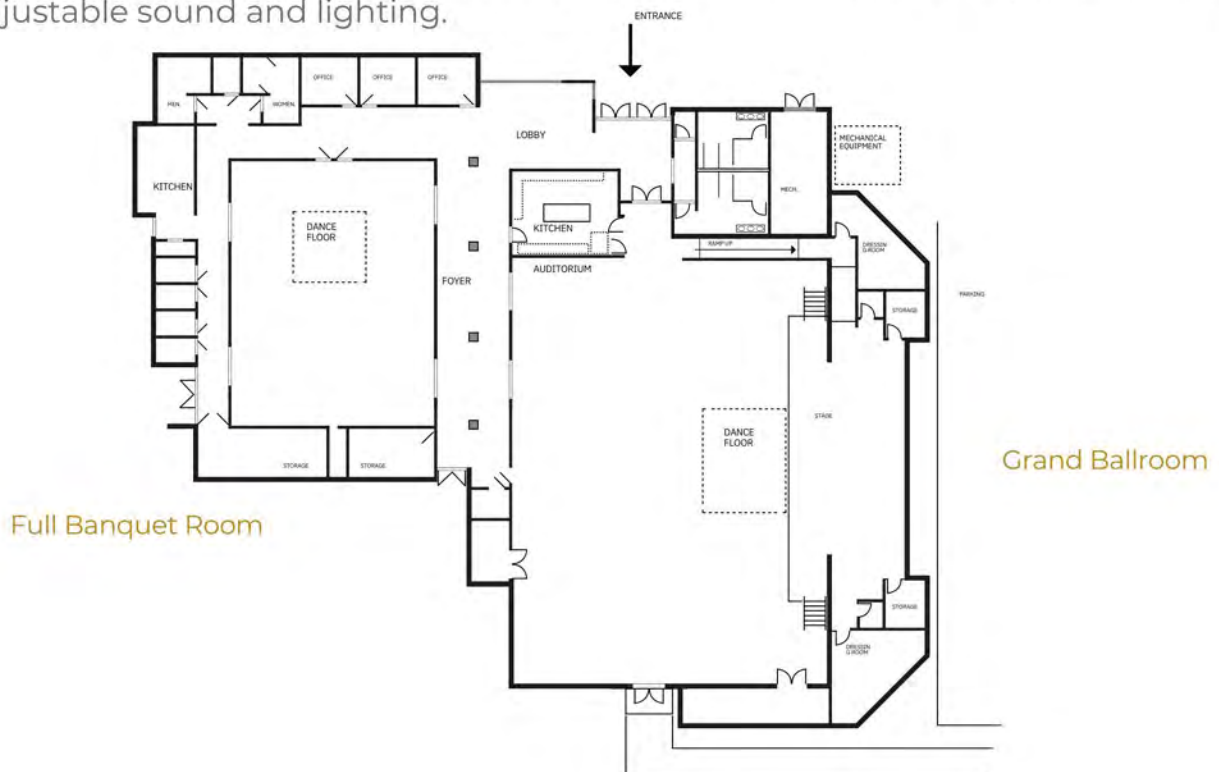
La Mancha Room (600sq. ft.)

The Willows Room (600 sq. ft.)

Crestwood Room (600 sq. ft.)

Each room can accommodate 40 people (banquet style) and 50 (theater style).

These carpeted rooms are perfect for small social events and other small private parties or meetings. 70" flat panel TV, state of the art built in sound system, wireless high-speed internet access, complete audio/visual equipment and adjustable sound and lighting.



Full Banquet Room

Grand Ballroom

CULTURAL CENTER



GRAND BALLROOM

Grand Ballroom (4,500 sq. ft. auditorium with stage)

Can accommodate up to 295 people (banquet style) and 600 (theater style)

Perfect for a larger wedding or event, the Grand Ballroom allows space for additional amenities.

Available for reservation including, but not limited to, a portable dance floor, dressing room, podium, theatrical stage lighting and buffet style tables.

Room Rates

All rates listed are hourly unless otherwise noted.

For non-profits, the resident rate applies.

For all other organizations, the non-resident rate applies.

Grand Ballroom	Resident	Non-resident	Minimum hours
Peak (Saturday - Sunday)	\$200	\$300	6hrs
	\$2,400	\$3,600	All Day
Monday - Friday	\$150	\$200	4hrs
	\$1,800	\$2,400	All Day

Damage Deposit \$1000

Full Banquet Room	Resident	Non-Resident	Minimum hours
Peak (Saturday - Sunday)	\$150	\$210	6hrs
	\$1,800	\$2,700	All Day
Monday - Friday	\$100	\$140	4hrs
	\$1,200	\$1,500	All Day

Damage Deposit \$500

Full Banquet Room	Resident	Non-Resident	Minimum hours
Peak (Saturday - Sunday)	\$75	\$105	6hrs
	N/A	N/A	All Day
Monday - Friday	\$50	\$70	4hrs
	\$600	\$840	All Day

Damage Deposit \$250

Meeting Rooms	Resident	Non-resident	Minimum hours
Peak (Saturday-Sunday)		N/A	N/A
Monday - Friday		\$35	2hrs

Damage Deposit \$125

Additional Amenities & Rates

Storage Room	\$100/mo.
Piano	\$250/event
Dance Floor	\$250/event
Catering/Kitchen Charge	\$200 Grand Ballroom \$100 Full Banquet Room \$50 Half Banquet Room

All rental fees are subject to applicable sales tax. No sales tax for staff costs. All pricing includes tables, chairs, and room setup.

CULTURAL CENTER



Our facility houses two kitchens which are equipped with refrigeration, warming ovens, prep tables, ice machines, utility sinks and more.

Visit us online to submit a Room Reservation Request, or schedule an appointment by contacting the Cultural Center at 561-790-5196

Village of Royal Palm Beach Cultural Center
151 Civic Center Way, Royal Palm Beach, FL. 33411
561-790-5192 www.royalpalmbeachfl.gov

BIKE RENTALS NOW AVAILABLE AT COMMONS PARK

About the Bicycles

- 1 Unisex Frame**
Step-thru frame makes it easy to get on and off. Bikes fit riders 5'0" - 6'5".
- 2 7 - Speed Gearing**
The simple twist shifting makes it easy to operate and fun to ride.
- 3 Comfy Seat**
The comfortable leather seat can be adjusted using the quick release clamp.
- 4 Front Basket**
Makes it easy to carry your bags, books, and other necessities. Plus, it has a built in cup holder.



You need a smartphone to use this bike share system



App will require location service and Bluetooth.

Download the App to get started



App Name:
ON BIKE SHARE



To Join the Program

1. Register and pay fee at the Sporting Center Building at Commons Park.
2. Install "On Bike Share" App on your phone
3. Enter your phone number to get started and agree to terms and conditions.
4. Click on start to find your system (The Village of Royal Palm Beach) and select it from the list.
5. Click "Join System" at the bottom of the page.
6. Read the "General Info" and click on "OK" at the bottom of the page.
7. Read and accept the waiver.
8. Once the Administrator approves your registration, the App will show an "Available Bikes" button on the bottom of the screen.



Bike Share is Here.

\$20

Unlimited rentals through December 31, 2023

ADDITIONAL INFORMATION

- Registration is available 7 days a week 8 AM - 5 PM.
- Registration fee of \$20 provides unlimited use of bikes through December 31, 2023.
- Bikes cannot leave Commons Park and must be returned to the bike station by 8 PM.
- You are financially responsible for bikes rented with your phone.
- Please limit rides to 4 hours as a courtesy to other riders.



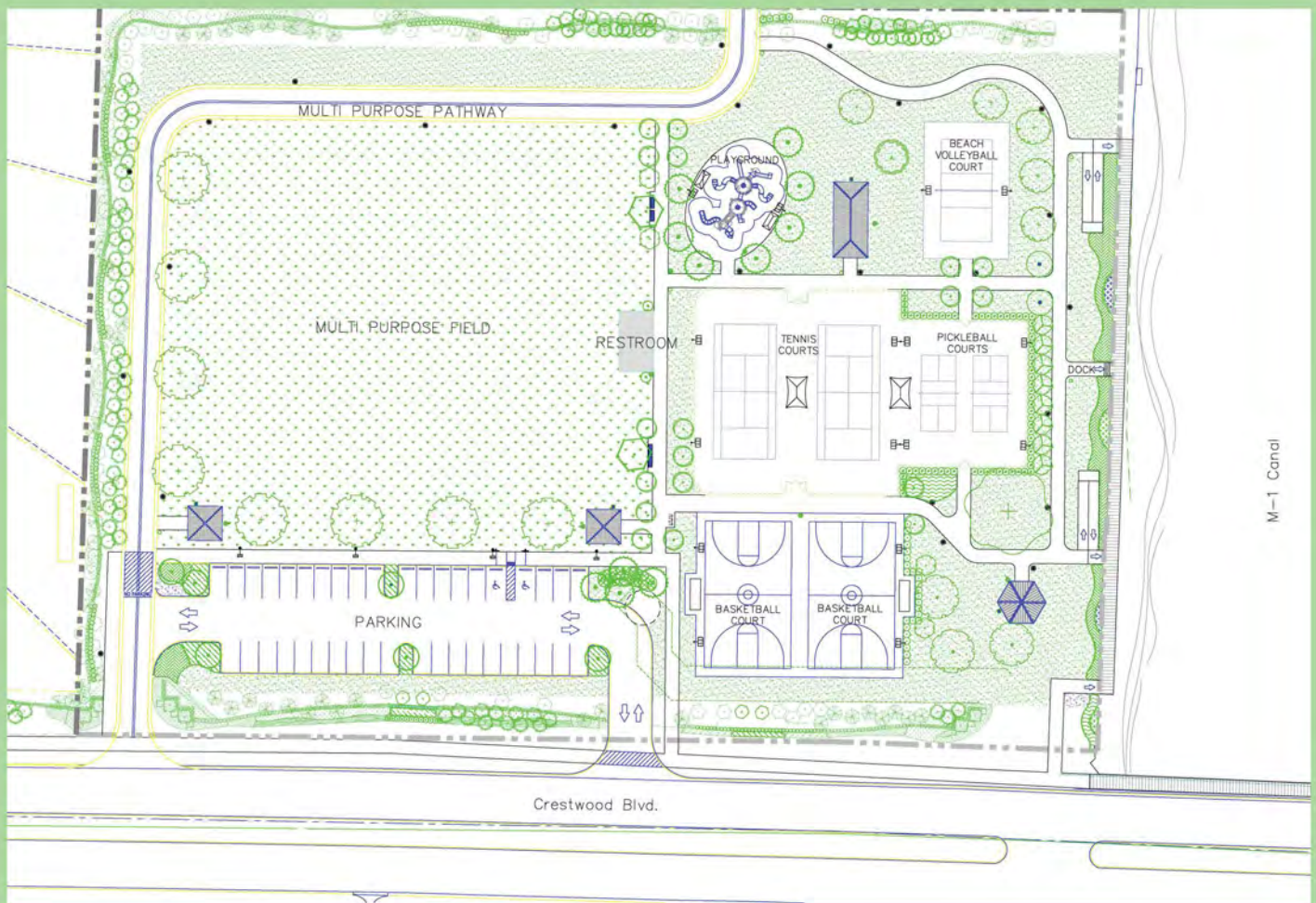
[COMING SOON] CRESTWOOD PARK NORTH

The Village of Royal Palm Beach is building a new park along the M-1 Canal, adjacent to the Bella Sera neighborhood. The park will be along Crestwood Boulevard North, near H.L. Johnson Elementary School.

Park Amenities

Basketball Courts
Fishing Dock
Park Benches
Multi Purpose Fields

Picnic Pavilions
Restroom Facilities
Tennis Courts
Toddler Play Area and Playscape



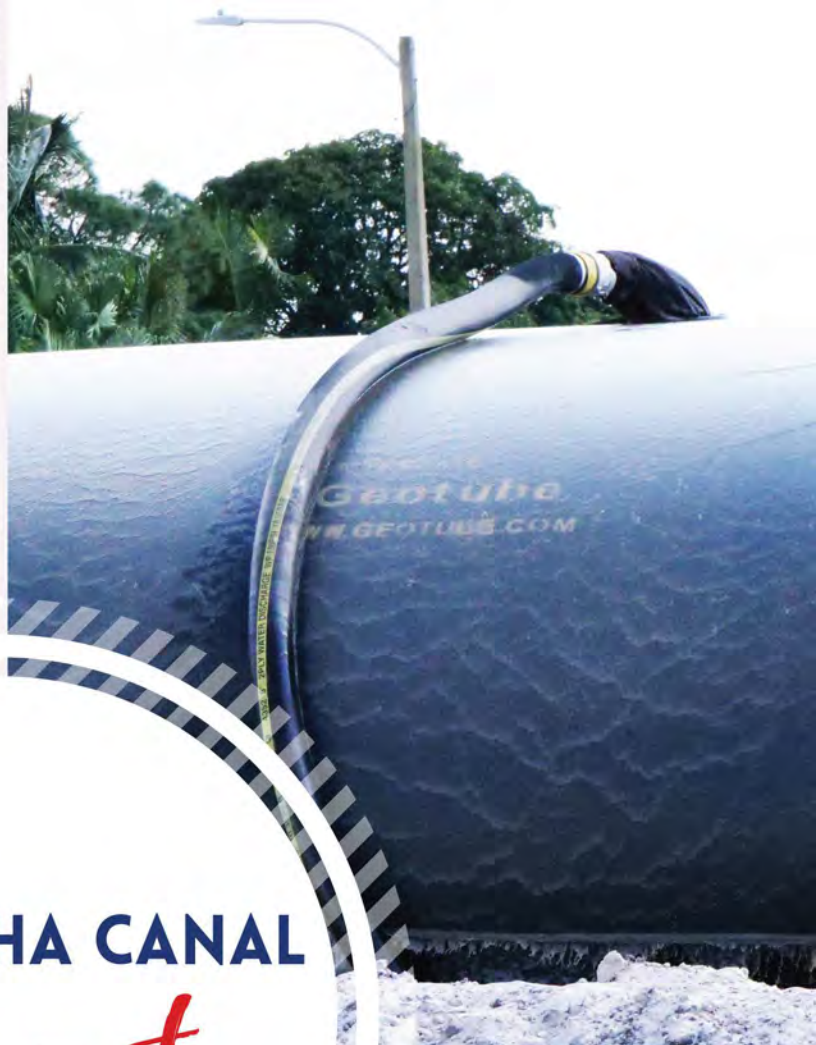
CANAL UPDATE

The Village of Royal Palm Beach has contracted with Atlantic & Gulf Dredging for a canal system dredging and dry retention pond project within a portion of the canal system located in the La Mancha subdivision. The project began a few weeks ago and is projected to be finished by the end of 2023. Affected residences will be notified via door hanger, ideally 2 weeks prior to dredging for your area. We ask that owners remove all irrigation pipes that extend further than ten feet from the canal bank. Not only does this prevent your pipes from being damaged by the barge, it also prevents your sprinkler systems from being clogged with the muck that is being removed from the canal.

While in progress the project could cause minor disruptions in the form of occasional traffic detours, noise, and the possibility of less than pleasant odors produced by the muck material removal, however, the end result will be a much healthier, deeper canal with improved water quality and the addition of the new dry retention pond will help improve flood water management. We want to thank you for your patience during the length of this much needed project. Our Public Information Specialist was able to get out on the canal today and take some pictures to provide our residents with a real time view of the project in action, they are pictured below.

If you have any questions, please contact the Village's Project Manager, Tim DeLand at 561-790-0221 or tdeland@royalpalmbeachfl.gov





LA MANCHA CANAL
Project



TECH TALK

VILLAGE NEW OFFICIAL WEB ADDRESS

www.royalpalmbeachfl.gov

The Village has adopted a .gov domain name to give you, the extra confidence that the information you are receiving is from a trusted official government site. Before a .gov domain name is issued, they are carefully examined to ensure the entity is a genuine U.S.-based government or public sector organization.



PROPERTY & MORTGAGE FRAUD ALERTS

Subscribing to property and mortgage fraud alerts is now available by clicking the banner on the Village website.

(See screenshot below)

According to the FBI, property and mortgage fraud is the fastest growing white-collar crime in the United States. Scammers file fake deeds, making it appear as if they own homes that are not actually theirs. These scammers then trick people into giving them money to rent or buy those homes. By signing up for FREE property fraud alerts, you will receive notification by email or telephone whenever a document is recorded in Palm Beach County using your name or your business's name.

CONTACT ELECTED OFFICIALS

Reaching out to your Village Elected Officials has never been easier! Simply visit the www.royalpalmbeachfl.gov home page and click on

"Ask The Council"

to report issues, opinions on policy, advocacy about hot topics, and requests for help accessing government services.

(See screenshot below)



PARKS / AMENITIES

CULTURAL CENTER (8 Acres) 151 Civic Center Way

16,500 sq. ft. building with a large Grand Ball Room, four multi-purpose banquet rooms and two kitchens. Facility is available for rentals.

PRESERVATION PARK (83 Acres) 100 Sweet Bay Lane

33,000 sq. ft. Recreation Center with a gymnasium, seven multi-purpose rooms and weight room. This park also contains pickleball courts, one lighted skateboard park, six lighted soccer/football fields with concession, playscape, four lighted basketball courts, and an off-road bike and walking trail through a twenty acre natural area.

WETLAND PARK (10 Acres) Crestwood Blvd. South

Paved walking trail, park benches and boardwalk.

LAKESIDE CHALLENGER PARK (4 Acres) 701 Royal Palm Beach Boulevard

A passive park with one gazebo, a fishing dock, park benches and a restroom facility.

CAMELLIA PARK (8 Acres) 6845 Camellia Park Drive

Two softball fields (one lighted), six lighted tennis courts, four bocce courts, one sand volleyball court, playscape, pavilion, four racquetball courts and a restroom facility.

BOBBIE JO LAUTER PARK (2 Acres) 179 Sandpiper Avenue

A passive park with benches, bike racks, two picnic pavilions and playscape.

BOB MARCELLO BASEBALL COMPLEX (23 Acres) 100 Wildcat Way

Eight lighted baseball fields, one lighted basketball court, two lighted tennis courts, picnic pavilion, jogging trail, two playscapes and three restroom facilities, three pavilions and concession facilities.

H.L. JOHNSON (9 Acres) 3701 Royal Palm Beach Boulevard

Nature trail/exercise stations and park benches.

EARTHDAY PARK (2 Acres) 135 Rivera Avenue

A passive park with large pavilion and park benches.

TODD A. ROBINER PARK (6 Acres) 350 Las Palmas Avenue

Four sand volleyball courts, two basketball courts, playscape, picnic pavilion, new restroom facility with an outside shower, fishing dock and a doggie "Bark Park".

PIPPIN PARK (2 Acres) Pippin Lane

Fishing dock, canoe/kayak launch, picnic pavilion, dog park, basketball court, playscape and two barbeque grills.

PARKS / AMENITIES

COMMONS PARK (160 Acres) 11600 Poinciana Boulevard

Features a ten acre great lawn, a fifteen acre lake, sporting center facility, banquet garden, wedding pavilion, two playscapes, interactive fountain, café, walking paths, two large picnic pavilions with grills, twenty small picnic pavilions, two volleyball courts, golf driving range, putting course, short game area, disc golf, bike rentals, dog park and so much more!

PENZANCE PARK (1 Acre) 10100 Penzance Lane

Fishing dock, playscape and park benches.

GRANDVIEW LINEAR PARK (2 Acres) Grandview Way

Park benches and walkway.

MOONLIGHT PARK (1 Acres) 1041 Moonlight Way

Playscape, gazebo with picnic tables and park benches.

FERRIN MEMORIAL PARK (8 Acres) 11921 Okeechobee Boulevard

Three lighted softball fields complex with restroom/concession facility and walking trail.

PINE ROAD PARK (5 Acres) 2700 Pine Road

Paved walking path, two basketball courts, two small picnic pavilions, neighborhood dog park and open areas.

VETERANS PARK (5 Acres) 1036 Royal Palm Beach Boulevard

Playscape, swings, interactive fountain, café, a market building, amphitheater, walking path, waterfall, two large picnic pavilions with grills, eight small gazebos, outdoor classroom, two restroom facilities and parking for 110.

LINDSAY EWING PARK (4 Acres) Linnet Lane

Baseball field, multi-purpose field, pavilion and restroom facility.

VILLAGE HALL (16 Acres) 1050 Royal Palm Beach Boulevard

Administration, Building Department, Code Enforcement, Planning & Zoning, Engineering, Palm Beach County Sheriff's Office District 9 and Palm Beach County Fire Rescue Station 28.

HOMEPLACE PARK (3 Acres) Grandview Circle

Playscape, pavilion, fishing dock, basketball court, benches, dog park and open areas.

PICNIC PAVILIONS

Plan your child's next birthday party, family picnic or social gathering at one of our picnic pavilions in Royal Palm Beach. Reservations are accepted in person at the Royal Palm Beach Recreation Center and online at www.royalpalmbeachfl.gov.





VILLAGE OF ROYAL PALM BEACH

1050 Royal Palm Beach Boulevard

Royal Palm Beach, FL 33411

561-790-5100

www.royalpalmbeachfl.gov

