



Village of Royal Palm Beach

Annual Report

October 1, 2017 – September 30, 2018

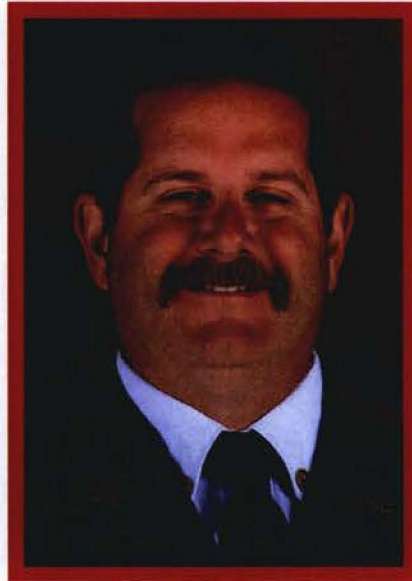


Table of Contents

Message from the District Chief	3
Alarm Activity	4 - 5
Auto Accidents	6
Structure Fires	7
Fire Stations and Personnel	8
Apparatus	9
Operations	10
Special Operations	11
Medical Services	12
Air Rescue/Trauma Hawk	13
Airport Rescue and Firefighting	14
Training & Safety Division	15
Support Services	16
Alarm Office	17
Bureau of Safety Services	18
Fire & Safety Inspections	19
Community Education	20



Message from the District Chief



William Rowley

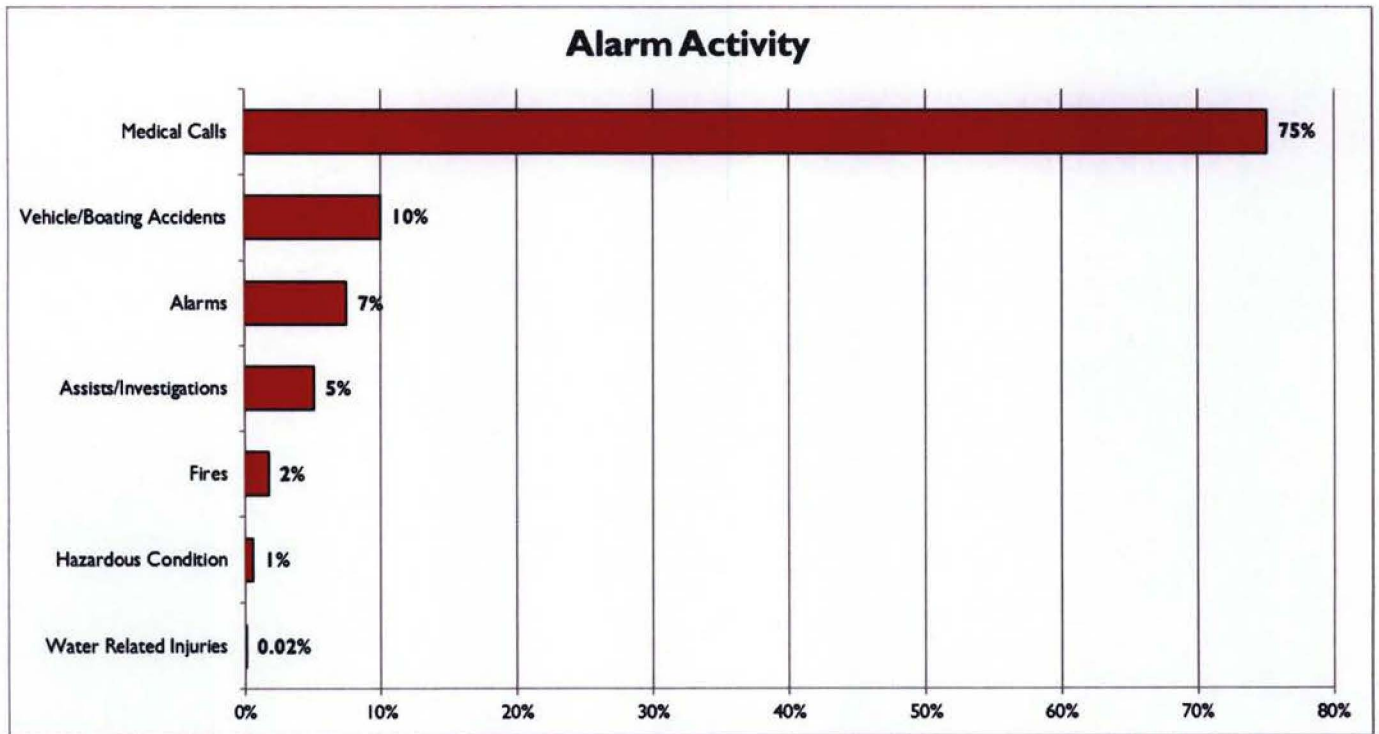
It is my pleasure to present the 2018 Annual Report for the Village of Royal Palm Beach. You will find information on the wide variety of services delivered by PBCFR, as well as an overview of the various divisions and their respective roles and responsibilities. Statistics specific to Royal Palm Beach are provided in graphic format.

Thank you again for your continued support of your firefighters!



Royal Palm Beach Alarm Activity - FY 2018

During the period from October 1, 2017 through September 30, 2018, Fire Rescue responded to 4,076 emergency calls within the village of Royal Palm Beach. The following is a breakdown of the major call types:

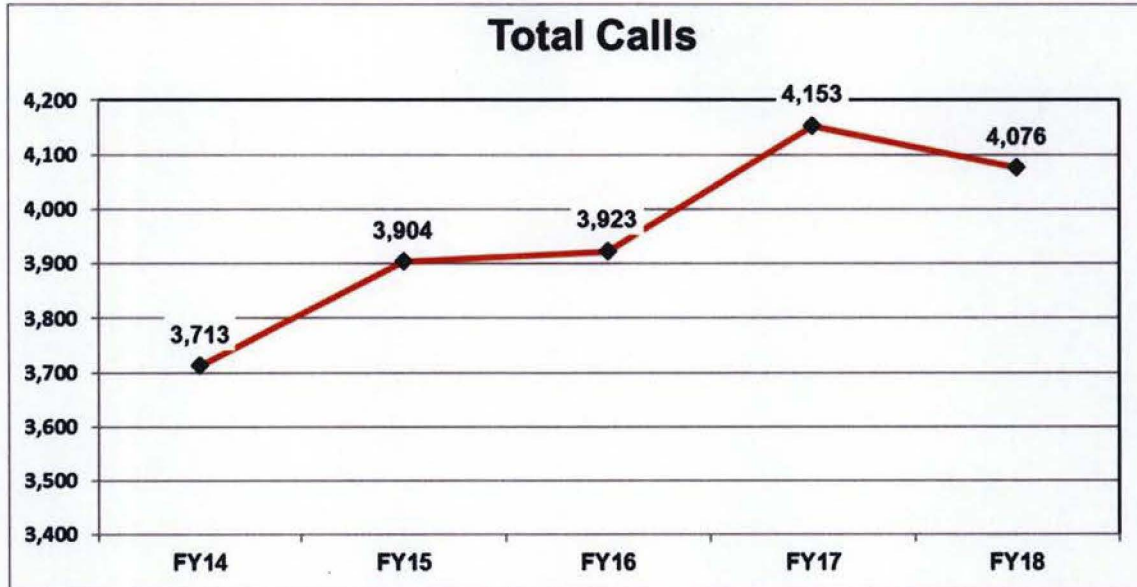


Type	# of Incidents
Water Related Injuries	1
Hazardous Condition	23
Fires	70
Assists/Investigations	208
Alarms	305
Vehicle/Boating Accidents	406
Medical Calls	3063
Total:	4076



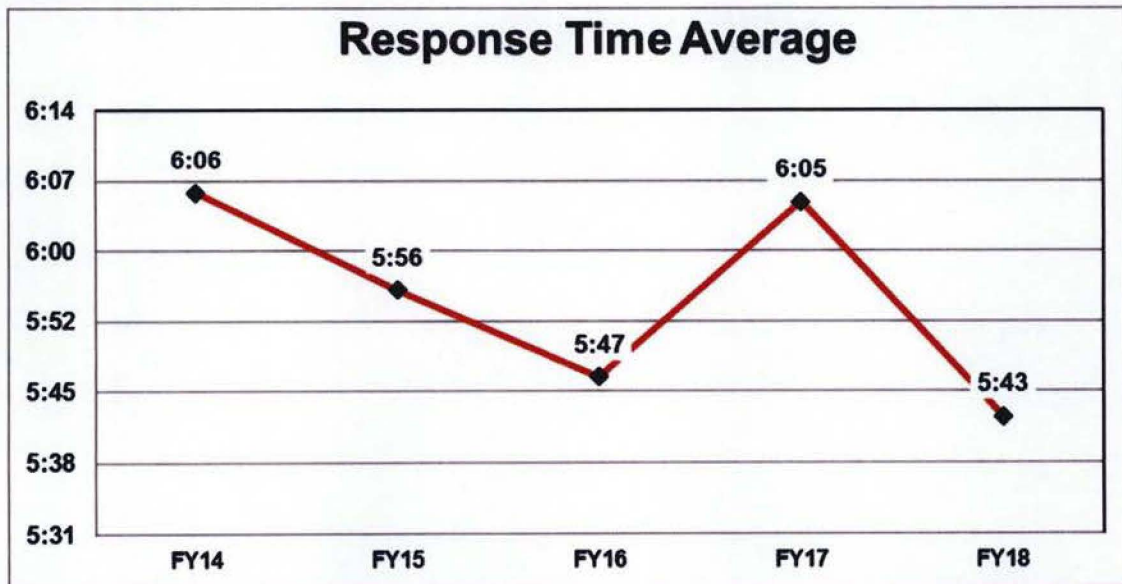
Royal Palm Beach Alarm Activity FY 2014-2018

The following chart reflects the emergency response activity over the past five years.



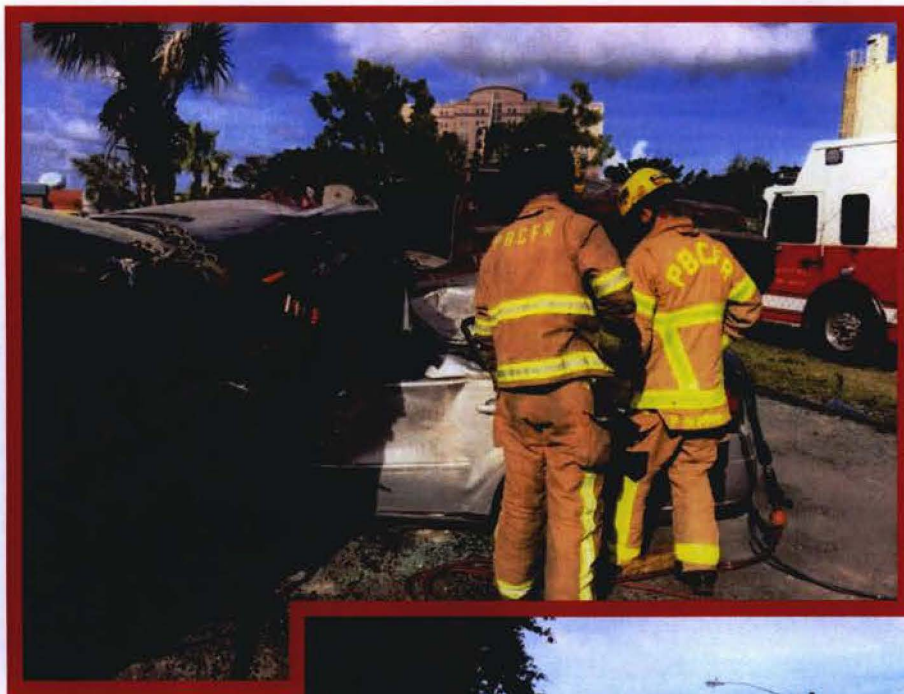
Response Times

Total response time is determined by utilizing three components which are: call handling time, turnout time, and travel time. The following chart reflects the average response time for the past five years.



Auto Accidents

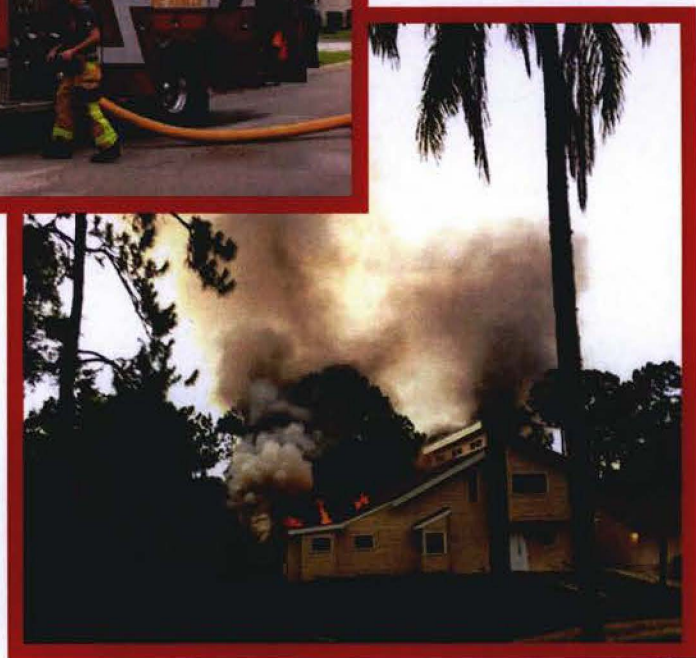
Fire Rescue responded to 370 vehicle accidents within Royal Palm Beach October 1, 2017 through September 30, 2018. Although vehicle accidents can be a serious matter, Palm Beach County Fire Rescue personnel are trained to handle these situations. The Training & Safety Division is currently providing ongoing extrication training for all personnel to stay proficient in the art of disassembling vehicles.



Structure Fires

Structure fires pose the most serious threat to life safety and are the highest fire loss potential to the citizens we serve. Fire Rescue must be prepared and respond to each structure fire call with adequate personnel and equipment. Therefore, each reported structure fire receives 3 fire engines, 2 rescues, 1 aerial (ladder), 1 EMS Captain, and a Battalion Chief. This is considered a national standard to adequately handle a structure fire.

Fortunately, due to smoke detectors and early fire discovery, human casualties have been held at a minimum. Palm Beach County Fire Rescue has an on-going program to install smoke detectors in homes of those who are unable due to physical or monetary needs.

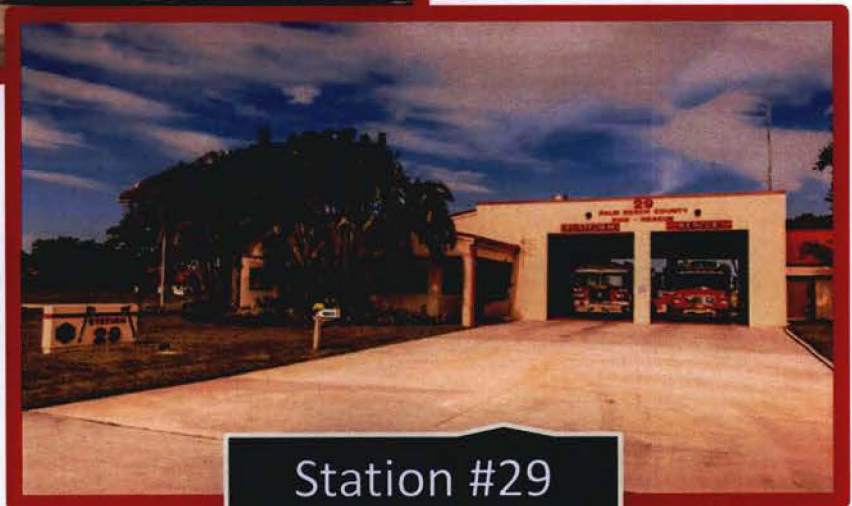


Fire Stations and Personnel

The Village of Royal Palm Beach is predominately covered by Stations 28 and 29. Station 28 is located at 1040 Royal Palm Beach Blvd, and station 29 is at 10055 Belvedere Road. Both stations are staffed around the clock and both have 6 firefighters assigned to them. Station 28 is the Battalion headquarters and also has the command staff consisting of the District Chief who oversees all operational activity and two 24 hour supervisors (Battalion Chief and EMS Captain). Additionally, there is a wild land/brush vehicle housed at station 28. This unit is cross staffed with the Engine crew and is utilized for brush fires and for areas which cannot be accessed by the fire engine. Royal Palm Beach is part of the PBCFR regional response system and the other fire stations, personnel, and emergency equipment responds as needed based on call type and needs.



Station #28



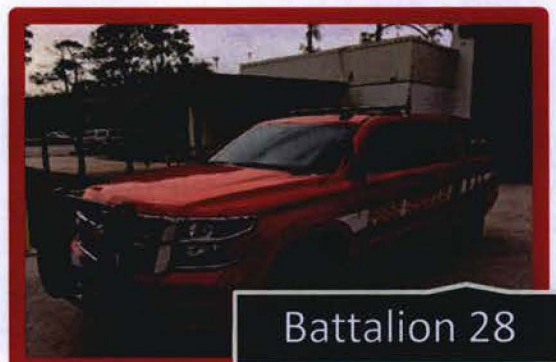
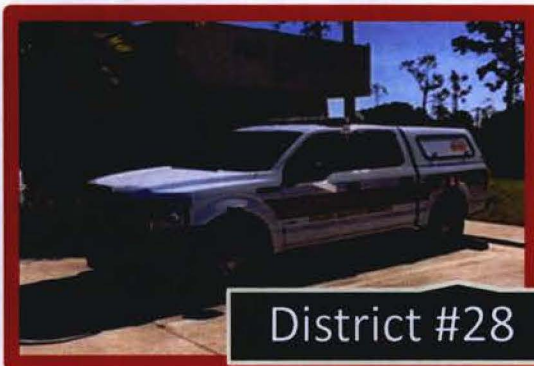
Station #29



Apparatus

The following vehicles are assigned in the Village of Royal Palm Beach:

<u>Station 28</u>	<u>Condition</u>
2017 Fire Engine	Excellent
2010 Transport Rescue Unit	Excellent
2012 4x4 Wildland Fire Apparatus	Excellent
2017 District Chief Command Vehicle	Excellent
2017 Battalion Chief Command Vehicle	Excellent
2018 EMS Captain Command Vehicle	Excellent



All firefighting vehicles meet current National Fire Protection Association specifications.

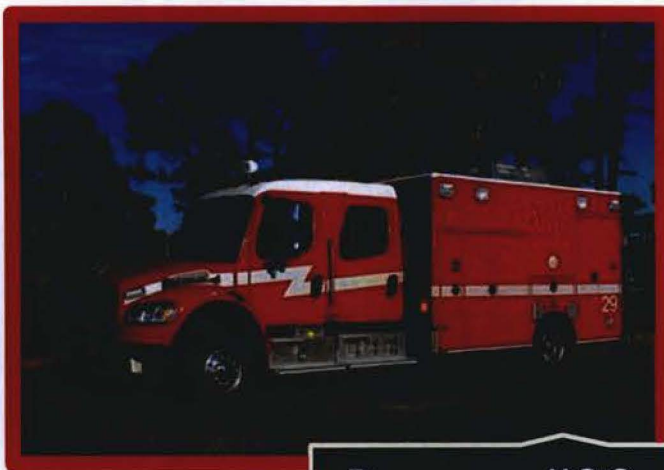


Apparatus

The following vehicles are assigned in the Village of Royal Palm Beach:

Station 29
2010 Aerial Fire Engine
2006 Transport Rescue Unit

Condition
Excellent
Excellent



Rescue #29



Truck #29

All firefighting vehicles meet current National Fire Protection Association specifications.



Operations

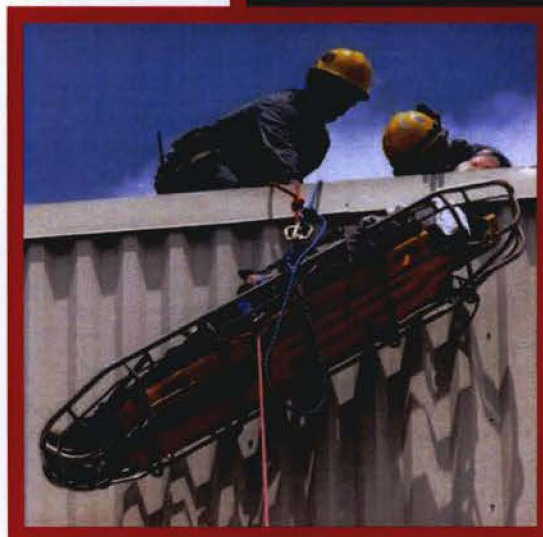
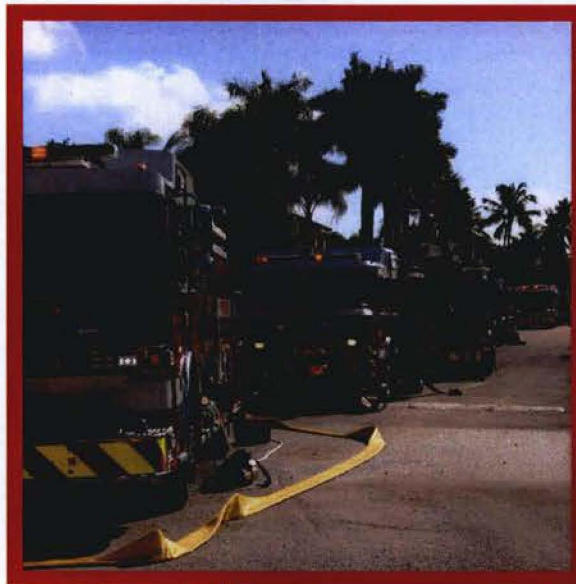
The Operations Division is the largest area of Palm Beach County Fire-Rescue, responsible for the direct delivery of emergency services.

PBCFR maintains 49 fire stations throughout the county and our municipal partners, with a minimum of 294 personnel on duty at all times.

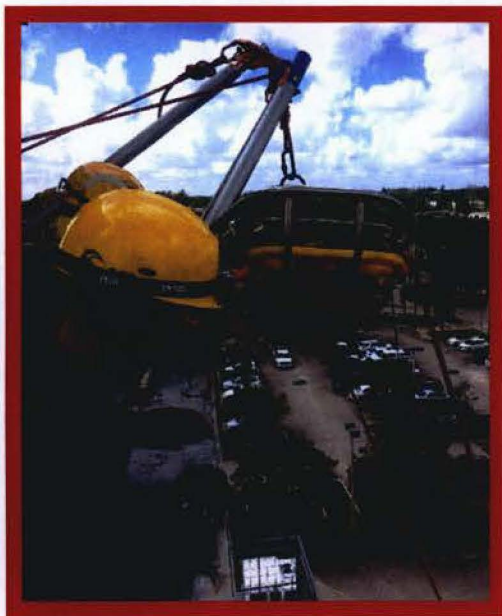
We maintain coverage when needed by re-locating units to fill areas of need.

PBCFR is an “all-hazards” department, capable of responding to everything from the most minor medical call, to a regional natural disaster.

All personnel are cross-trained as firefighters and EMS, ensuring the most efficient possible delivery of fire suppression, technical rescue and extrication, and emergency medical care.



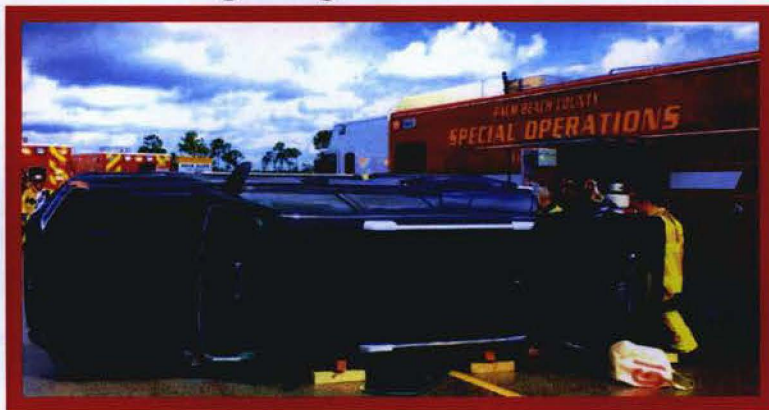
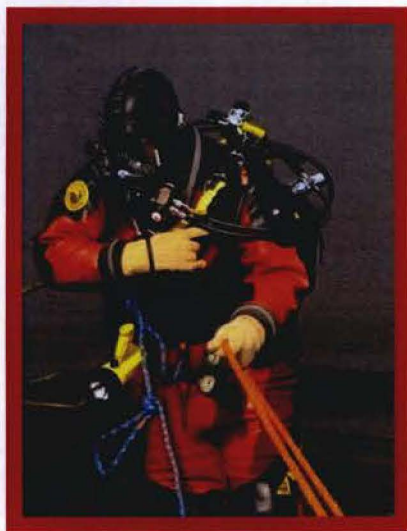
Special Operations



PBCFR maintains two Special Operations teams strategically located to respond to emergencies county-wide. Along with teams from West Palm Beach, Boca Raton, and Delray Beach, we form a regional response to hazardous materials incidences.

Special Operations technicians receive hundreds of hours of ongoing training annually to maintain readiness in a number of disciplines:

- Hazardous materials response
- Confined space and technical rescue
- Dive rescue
- Advanced automobile extrication
- Explosive ordnance disposal (with PBSO)
- High Angle Rescue



Medical Services

In 2017, PBCFR renamed the Rescue Division to the Division of Emergency Medical Services which more fully reflects the dynamic role of medical care services offered by PBCFR. This division is comprised of our traditional EMS program as well as our new Mobile Integrated Health (MIH) program.

MIH was designed in an effort to enhance the EMS approach to meeting needs of patients after their 911 call through multidisciplinary assessment and care coordination. PBCFR employs a Community Paramedicine Coordinator and Medical Social Work Coordinator to coordinate the MIH Program.

Our exceptional EMS services have continued to provide unparalleled emergency care for those we serve. PBCFR is among the top in the nation at cardiac arrest resuscitation, and continues to elevate standards across the country based on our best practices. This has been accomplished through a partnership of evidence based science and innovative medical protocols and techniques. PBCFR has continuously been recognized both nationally and internationally for our medical and trauma emergency services. PBCFR Medical Services Division is prepared and honored to serve the citizens and visitors of Palm Beach County.



Air Rescue/Trauma

Palm Beach County is home to two Level I Trauma Centers, at St Mary's Hospital and Delray Community Hospital. This is the highest level of care designated by the state of Florida. Critical patients are transported either by ground ambulance, or by one of two Trauma Hawk helicopters.

In partnership with the Health Care District, PBCFR provides paramedics and flight nurses to rapidly transport injured patients, increasing their chance for survival.



Aircraft Rescue & Firefighting (ARFF)

Visitors to Palm Beach County can expect first-rate EMS care and fire protection from our Aircraft Rescue Firefighting (ARFF) station located next to the runway at Palm Beach International Airport.

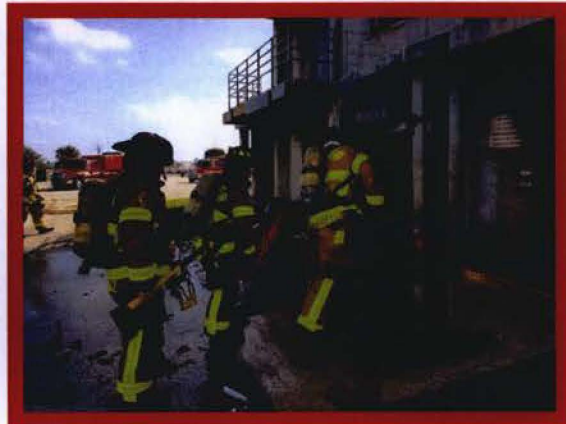
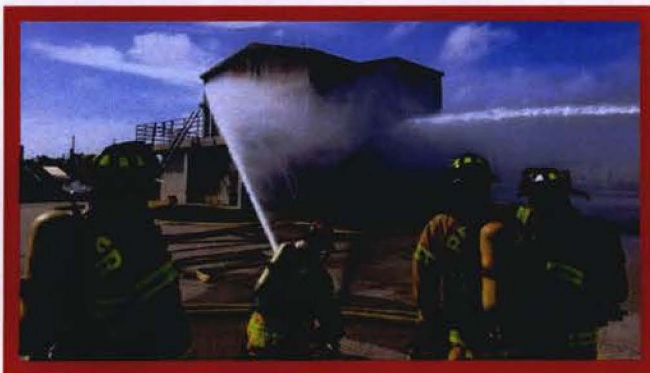
The firefighter/ paramedics assigned to Station 81 provide EMS and fire suppression within the terminals, as well as a rapid response to aircraft emergencies.

Station 81 houses specialized “Dragon” units, capable of quickly delivering large amounts of firefighting foam in the event of an emergency landing.



Training & Safety Division

The Training & Safety Division is responsible for training PBCFR's existing 1260+ certified Firefighters, 200 support personnel, and new recruits in Fire (All Hazards), EMS and continuing education utilizing up-to-date content and cutting edge techniques. It operates using state-of-the-art technology to deliver constant, repeatable training through the department's training facility classroom's, burn building, training tower, numerous props and online intranet sites. The Video Production Department support the Training & Safety Division by producing training videos distributed over the intranet and County Cable Channel 20. The Video Production Department provides video and still photography for scheduled seminars, conferences, promotions, and graduations.



Support Services

Support Services provides logistical support for the 49 fire stations, as well as equipment and apparatus maintenance.

The areas of responsibility are comprised of several areas:

- Apparatus purchase and repair
- Facility construction and maintenance
- Information Technology (ITS)
- Communications

Existing vehicles are maintained at our state of the art shop on Vista Parkway, where technicians service vehicles from Palm Beach County and several other fire departments.

Palm Beach County Fire-Rescue's Capital Improvement Plan provides for the purchase and replacement of vehicles annually, to maintain the best possible fleet.

In 2017, we upgraded to the P-25 radio system, a digital platform that will improve emergency communications.

New technology is constantly evaluated to improve operational efficiency in our service delivery.



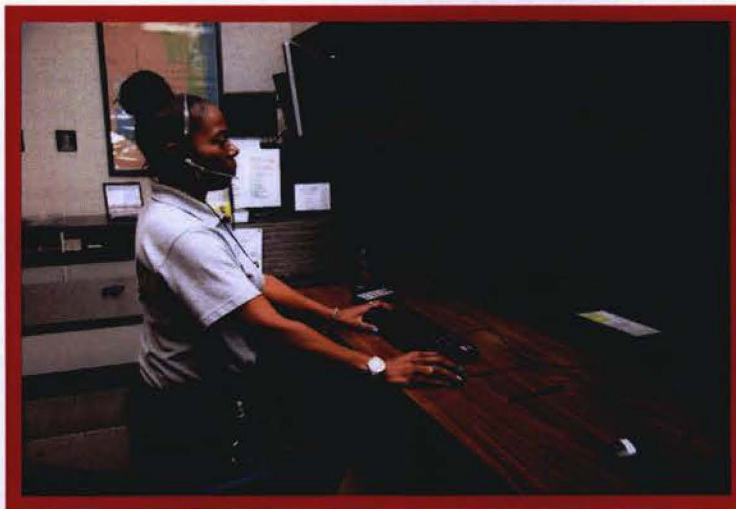
Alarm Office

The Alarm Office answers nearly 200,000 911 calls annually throughout the county. In addition to PBCFR, it handles dispatching duties for Delray Beach, West Palm Beach, Palm Beach Gardens, Riviera Beach, and other smaller municipalities.

Dispatchers are highly trained, able to quickly determine the nature of the emergency, provide instruction to the caller, and send the closest appropriate unit.

Text to 911 was publicly launched on June 25, 2018. It provides another avenue for our Palm Beach County hearing impaired citizens and those citizens who need to reach 911 centers when it is not safe to make a voice call.

Upgrades to the CAD system provides critical information quickly to the m the mobile data terminals in each emergency vehicle.



Bureau of Safety Services (BOSS)

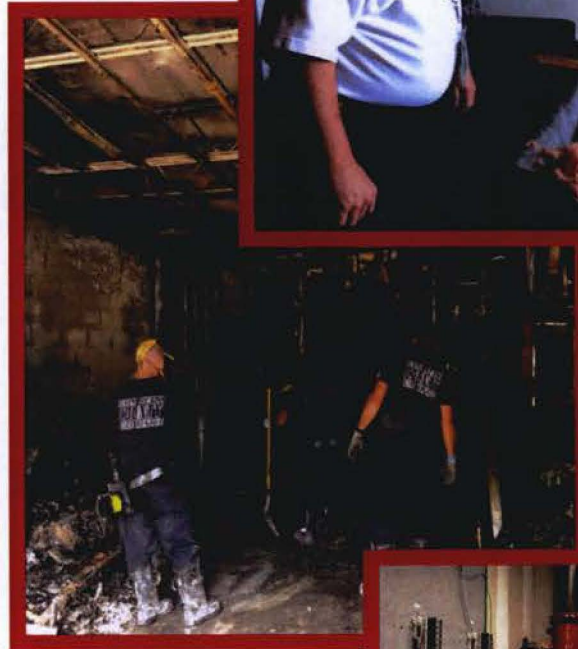
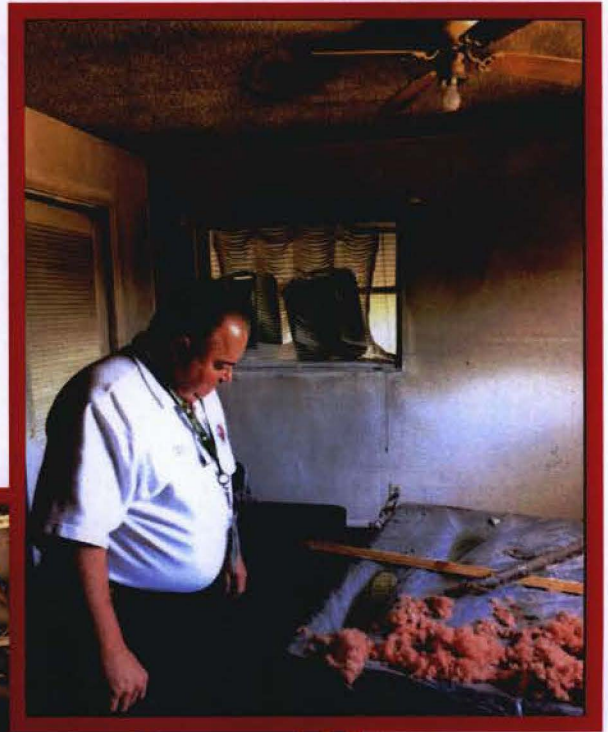
The Bureau of Safety Services is responsible for a number of fire prevention activities, as well as fire investigations.

Bureau inspectors visit commercial businesses and multi-family dwellings annually, ensuring compliance with the Fire Prevention Code.

New construction must go through Plans Review to ensure that the building meets current code.

Investigators are responsible for determining cause and origin for suspicious fire, and making criminal arrests. Last year, BOSS posted a clearance rate higher than the national average.

The Office of the Fire Marshal is responsible for the development, revision, and enforcement of the Fire Prevention Code in Palm Beach County.



Fire and Safety Inspections

Palm Beach County Fire Rescue's Bureau of Safety Services conducts safety and fire inspections annually on commercial and multi-family buildings. The purpose of these inspections is to increase fire safety and assure compliance with the local fire code. Additionally, all residential inspections are completed by the station personnel. This is part of our Residential/Company Inspection program which requires inspections of all buildings with three or more living units. These inspections are conducted on a regular basis depending on the type of property. During these inspections, the personnel are able to answer any questions from the residents, or they may be able to assist them with any other fire related needs. The following inspections were completed in the Village of Royal Palm Beach.

	Number of Inspections Completed
Annual Business	823
Annual Residential	252
New Construction Inspection	170
Occupational License Inspection	129
Vacant Inspection	60
Other Misc. Inspections	18
Total Inspection Activity	1,452



Community Education Programs

This past fiscal year 50 community education programs were conducted in the Village of Royal Palm Beach. These programs brought fire safety and education training to 7,740 individuals, which resulted in a total of 7,084 contact hours. A complete list of these classes is attached to this report.

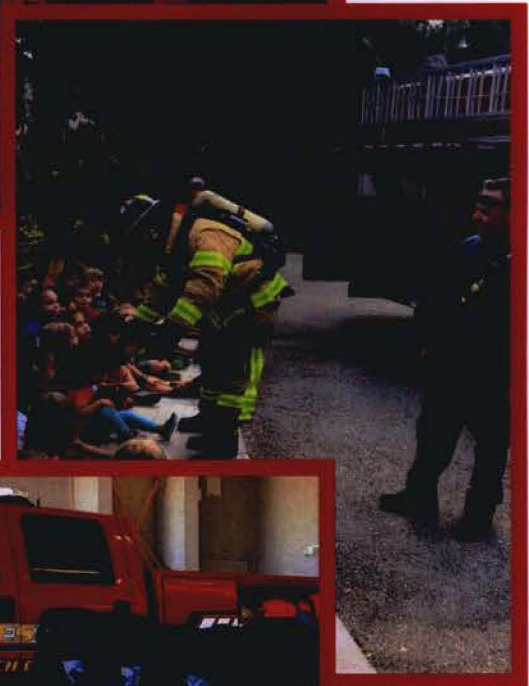
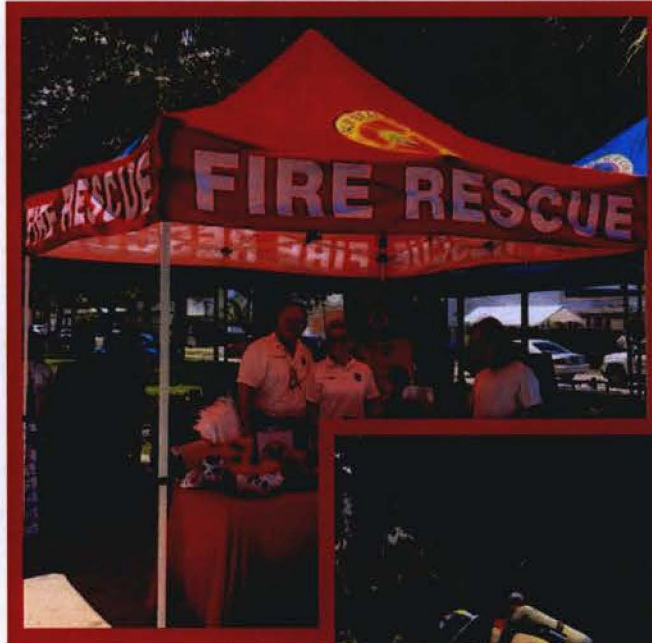
Community Educators provide instruction on a variety of topics, as well as offer speakers for presentations.

Presentations include:

- Fire safety in the home
- Carbon monoxide awareness
- Disaster preparedness
- Hands-only CPR

As part of our ongoing commitment to injury prevention, classes are also offered for fall prevention for our elderly citizens.

Car seats are installed at a number of fire stations throughout the county, and swim lessons for children are offered as part of the Drowning Prevention Coalition.



Date	School/Business	Attendance	PCH's	Station
10/2/2017	Hands on Learning Center	68	34	Station 28
10/13/2017	Royal Palm Beach Library	100	200	Station 28
10/13/2017	Royal Palm Beach Elementary	750	750	Station 28
10/19/2017	La Petite Academy	88	22	Station 28
10/25/2017	Child Safety Seats	36	18	Station 28
10/28/2017	Our Lady Queen of the Apostles	150	75	Station 28
11/6/2017	Village of Royal Palm Beach	35	140	Station 28
11/9/2017	Village of Royal Palm Beach	35	140	Station 28
11/16/2017	Village of Royal Palm Beach	35	140	Station 28
11/22/2017	Child Passenger Seat	28	28	Station 28
11/27/2017	Village of Royal Palm Beach	5	5	Station 28
12/9/2017	Master Ken's Martial Arts Academy	100	50	Station 28
12/16/2017	Our Lady Queen of Apostles/Breakfast with Santa	75	37.5	Station 28
12/27/2017	Child Safety Seats	10	7.5	Station 28
1/13/2018	PBSO - District 9/Girl Scout Training	30	30	Station 28
1/23/2018	HL Johnson Elementary School	150	75	Station 28
1/24/2018	Child Safety Seats	48	48	Station 28
1/26/2018	Child Safety Seats	2	2	Station 28
2/28/2018	Child Safety Seats	32	128	Station 28
3/28/2018	Child Safety Seats	18	9	Station 28
4/25/2018	PBCFR/SAFE KIDS	36	18	Station 28
5/7/2018	Cypress Trails Elementary	225	225	Station 28
5/18/2018	Cypress trail Elementary	500	1,500	Station 28
5/28/2018	Royal Palm Beach Parks and Rec.	200	400	Station 28
5/30/2018	Western Community Business Associates	35	35	Station 28
6/7/2018	Village of Royal Palm Beach	30	120	Station 28
6/18/2018	Royal Palm Beach Park s and Rec.	80	160	Station 28
6/27/2018	Child Passenger Safety Seats	24	12	Station 28
6/28/2018	Coalition for Independent Living/at Station #28	55	110	Station 28
7/12/2018	Palm Beach County Library Royal Palm Branch	35	53	Station 28
7/13/2018	Palm Beach County Library Royal Palm Branch	35	53	Station 28
7/14/2018	Woofapalooza at Commons Park/Bark Park	300	150	Station 28
7/25/2018	Child Passenger Seats	28	14	Station 28
8/10/2018	Royal Palm Beach Rec Center/Senior Expo	100	50	Station 28
8/22/2018	Child Passenger Seat	46	23	Station 28
9/8/2018	3yr old bday prty/Mike Martinez	10	10	Station 28
9/11/2018	Matter of Balance	25	25	Station 28
9/11/2018	Matter of Balance	25	25	Station 28
9/26/2018	Child Safety Seats	26	13	Station 28
10/3/2017	National Night Out	100	50	Station 29
10/7/2017	Home Depot	300	150	Station 29
10/10/2017	Home Away From Home Daycare	120	60	Station 29
10/19/2017	Creative Montessori Academy	60	15	Station 29

10/27/2017	PBCSO National Night Out at Target	2,800	1,400	Station 29
10/31/2017	Palms Wellington Surgical Center	45	45	Station 29
11/30/2017	US Department of Agriculture	30	30	Station 29
4/7/2018	Childrens Home Society	300	150	Station 29
6/21/2018	Small Fish,Big Fish	100	100	Station 29
9/15/2018	Richie Moshan	25	25	Station 29
9/29/2018	Old Navy	250	125	Station 29
TOTAL		7,740	7,084	