

Agenda Item # __C - 11__

Village of Royal Palm Beach

Agenda Item Summary

Agenda Item:

Approval and authorization for the Village Manager to facilitate a Change Order to the Agreement with Epicurean Park, LLC, dba Nex Era Services for Roadway Grounds Maintenance Service to modify the Scope of Work to add, as Other Services, the additional maintenance area of Royal Palm Beach Boulevard from Okeechobee Boulevard to 40th Street. The Change Order includes increased cost for FY22 in the amount of \$72,375.80.

Issue:

The Village entered into an Agreement for Roadway Grounds Maintenance Service (“Agreement”) with Epicurean Park, LLC, dba Nex Era Services on October 4, 2019, effective October 1, 2019, which remains in effect. Village staff requests a Change Order to modify the scope of work to add, as Other Services, the additional maintenance area of Royal Palm Beach Boulevard from Okeechobee Boulevard to 40th Street in accordance with Condition H of the Special Conditions and Specifications in the Bid Documents provided as Exhibit A to the Agreement. The estimated cost for these Other Services is \$72,375.80, as provided in Estimate 1231.

The Public Works Department currently has two (2) GMI positions that we have not been able to fill. The budget value of these two positions is approximately \$100,000 which is equivalent to the annualized cost of the increase in the Scope of Work for the Roadway Grounds Maintenance Service contract. Public Works is requesting to eliminate two (2) GMI positions in our Grounds Division to offset the increase in the current and future Roadway Grounds Maintenance Service contracts.

Recommended Action:

Upon Council review staff recommends a motion to approve.

Initiator:	Village Manager	Agenda	Village Council
Paul L. Webster,	Approved:	Date:	Action:
Director of		12/16/21	
Public Works			

Epicurean Park, LLC
 PO Box 276217
 Boca Raton, FL 33427 US
 (561) 702-9242
 matt@epicureanfl.com



ADDRESS

Village of Royal Palm Beach
 1040 Royal Palm Bch Blvd
 Royal Palm Beach, FL 33411
 United States

SHIP TO

Village of Royal Palm Beach
 1040 Royal Palm Bch Blvd
 Royal Palm Beach, FL 33411
 United States

Estimate 1231

DATE 12/07/2021

P.O. NUMBER

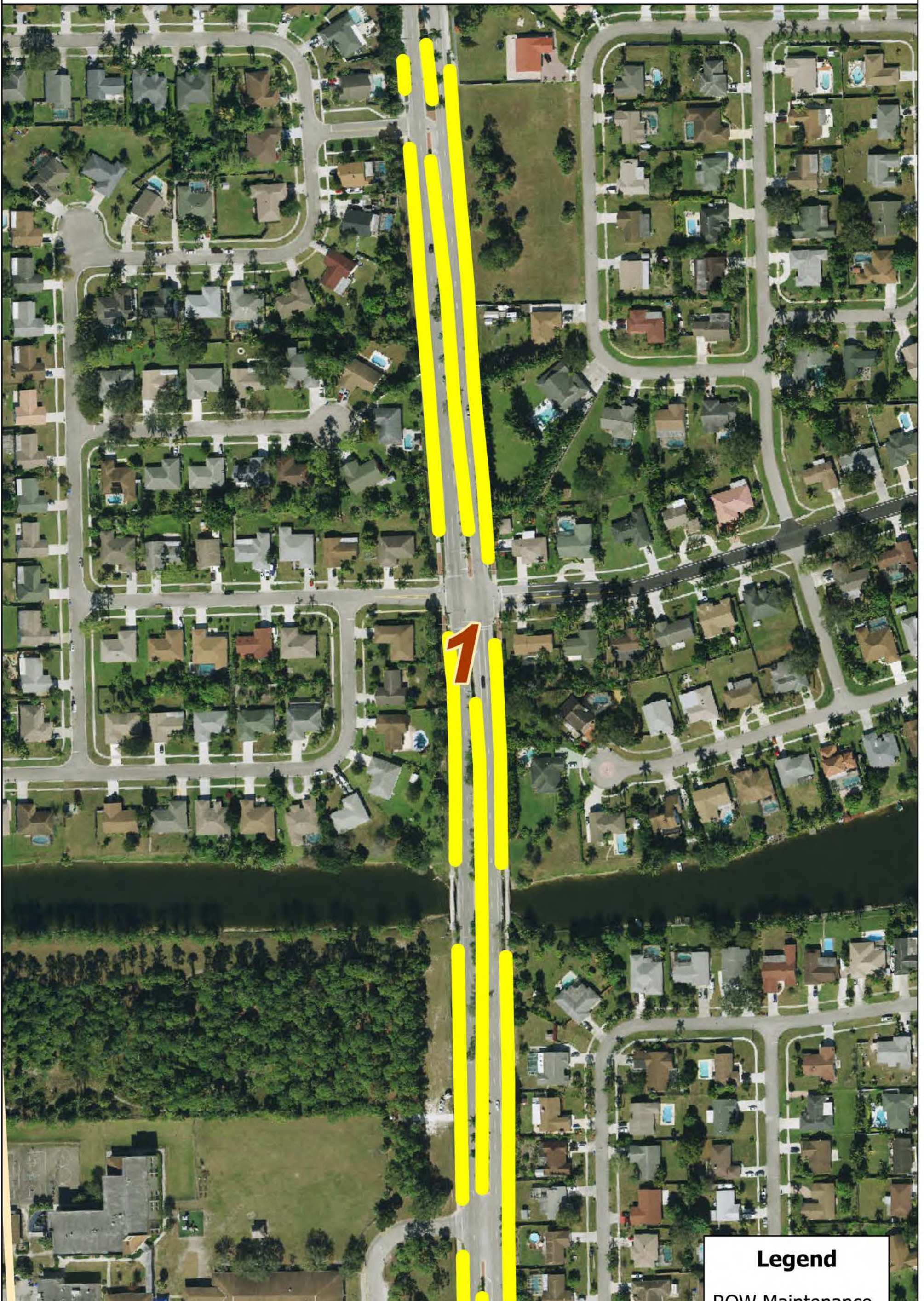
Royal Palm Blvd

DATE	DESCRIPTION	QTY	RATE	AMOUNT
	Maintenance Services for Royal Palm Blvd - Okeechobee Rd north to 40th Street (Prices Listed Per Service) **Adjusted for total services for January 1st - September 30th**			
	Mowing	34	637.95	21,690.30
	Edging / String Trimming	34	550.13	18,704.42
	Weed Control	34	40.00	1,360.00
	Litter Removal	34	180.00	6,120.00
	Raking	34	76.92	2,615.28
	Shrub Pruning	8	1,587.60	12,700.80
	****Additional Work****			
	Tree Trimming	1	4,835.00	4,835.00
	Mulching	1	4,350.00	4,350.00
			SUBTOTAL	72,375.80
			TAX	0.00
			TOTAL	\$72,375.80

Accepted By

Accepted Date

THE VILLAGE OF ROYAL PALM BEACH, FLORIDA



Date: 12/07/2021




ROW MAINTENANCE RPB BLVD N MAP

0 0.02 0.04 0.09 Miles

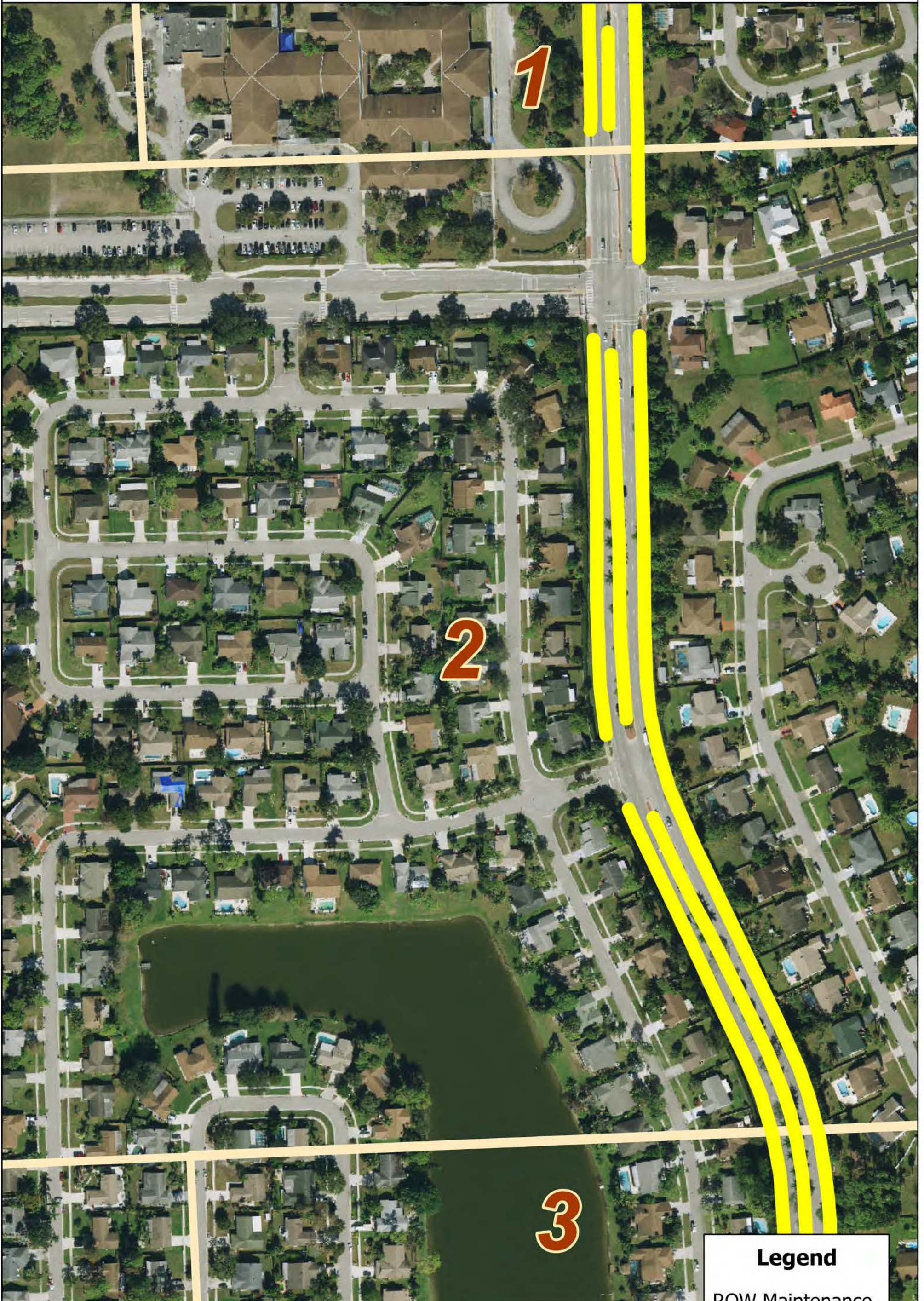
Legend

ROW Maintenance

 ROW

 MAPBOOK_GRID

THE VILLAGE OF ROYAL PALM BEACH, FLORIDA



Date: 12/07/2021



ROW MAINTENANCE RPB BLVD N MAP


0 0.02 0.04 0.09 Miles



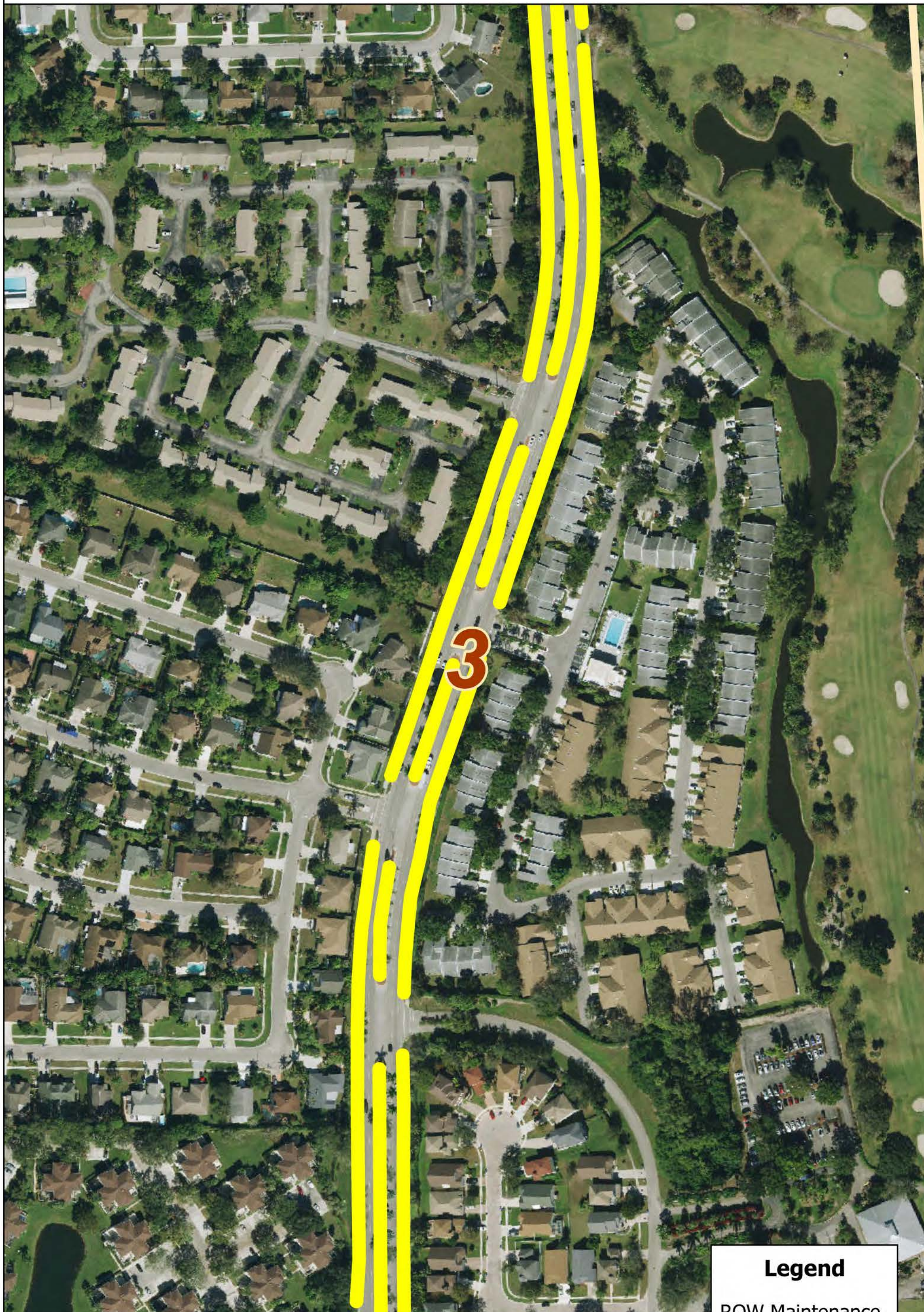
Legend

ROW Maintenance

 ROW

 MAPBOOK_GRID

THE VILLAGE OF ROYAL PALM BEACH, FLORIDA



Date: 12/07/2021



ROW MAINTENANCE RPB BLVD N MAP

0 0.02 0.04 0.09 Miles

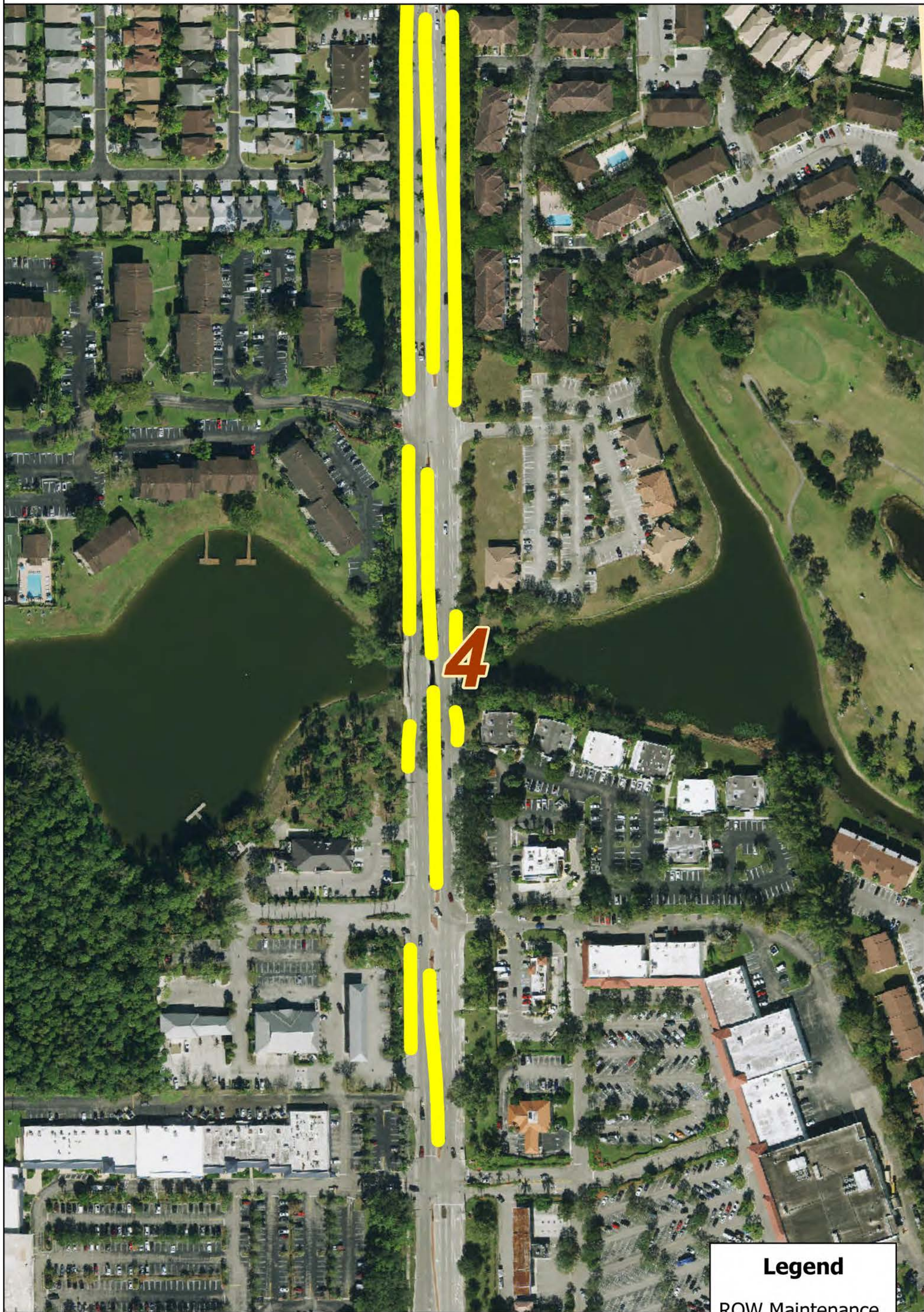
Legend

ROW Maintenance

 ROW

 MAPBOOK_GRID

THE VILLAGE OF ROYAL PALM BEACH, FLORIDA



Date: 12/07/2021



ROW MAINTENANCE RPB BLVD N MAP

0 0.02 0.04 0.09 Miles

Legend

ROW Maintenance

 ROW

 MAPBOOK_GRID