

FALL 2021

COMMUNITY CONNECTIONS

VILLAGE OF ROYAL PALM BEACH, FLORIDA
COMMUNITY MAGAZINE

REDEVELOPING A KEY AREA PAGE 4

CRITICAL SAFETY UPGRADES PAGE 6

NEW PROGRAMS AND EVENTS PAGE 12

NEW PICKLEBALL
COURTS COMING

PAGE 8





COMMUNITY CONTENTS



PAGE 4

VILLAGE TAKING NEW LOOK AT STATE ROAD 7

Experts are studying State Road 7 to determine how to redevelop key areas.

PAGE 5

BRAND NEW CAFE OPENS IN VETERANS PARK

There is a brand new cafe open inside Veterans Park where you can grab breakfast or lunch six days a week.

PAGE 6

MAKING VILLAGE PARKS SAFER

The Village has made major investments in upgrading security at several parks.

PAGE 12

WE'RE BACK!

Events, classes, and programs are back! Check out the Fall/Winter schedules and enjoy!

THREE THINGS TO REMEMBER

➔ Post Office Closed



The U.S. Postal Service has decided it will not reopen its Village Hall location until the new Village Hall is constructed.

The small, satellite location inside the Village Hall lobby was closed during the pandemic.

A new Village Hall is being planned for the same location. Once it is completed, the Postal Service will reopen a location inside the building.

.....

➔ We're Still in Hurricane Season



August and September represent the peak of hurricane season. Do you have your plan? Is your hurricane kit ready?

For more information on hurricane readiness, visit our web site: RoyalPalmBeach.com.

.....



Do you want to be the first to know what's happening in the Village? Then subscribe to the Village's YouTube channel.

You can watch your tax dollars at work!



ELECTRIC VEHICLE CHARGERS COMING TO NEW VILLAGE HALL

As a sign of future things to come, the new Village Hall project will now include charging stations for electric vehicles (EVs).

FPL is partnering with the Village to pick up the installation costs of the new stations. They will be free to the public with the Village paying for the electricity.

"If we can do a little part to transition [to EVs] quicker, then it is better for the environment and better for transportation," said Village Manager Ray Liggins.

Encouraging the use of electric vehicles is part of the Village's long term strategic plan.



LEADERSHIP LOOKS TO GIVE KEY CORRIDOR A SERIOUS ECONOMIC BOOST

State Road 7 is arguably the most important commercial corridor in the Village, and now leaders are setting their sights on giving it a powerful redevelopment spark.

The Village has hired a regional planning agency to do an in-depth analysis of State Road 7 from just north of Okeechobee Boulevard to just south of Southern Boulevard.

POSSIBLE THREE NEW SHOPPING CENTERS

One of the questions to be answered is whether as many as three additional commercial centers along that stretch of road would help boost the Village's economic growth.

Over the next several months, the experts will:

- Research corridor land uses and physical conditions.
- Interview business owners and other stakeholders, hold public workshops, do several public presentations.
- Come up with concepts for up to three new commercial centers.

A final report will be presented to the Village Council for review.

NEW PLACE TO GRAB A BITE

There is a brand new cafe where you can enjoy breakfast or lunch while relaxing in Veterans Park.

Seeds Cafe has opened its doors inside the park. From wraps to flatbreads, sandwiches to salads, Seeds Cafe is the perfect place to grab a bite and enjoy one of the Village's signature parks. There is also a terrific kids menu.

Seeds
Cafe

Veterans Park
1036 Royal Palm Beach Blvd
Tues - Sun: 8am - 3pm

(561) 562-9537
seedscafe.business.site
seedscafepb@gmail.com





VILLAGE IMPROVES PARKS FACILITIES AND UPGRADES SAFETY

The pandemic reduced the number of people using the Village's parks and recreation facilities over the past twelve months, but the health-imposed hiatus did not mean parks and recreation was not busy.

Over the past several months, the Village has taken advantage of a lull in public access and programs to make several upgrades to its facilities.

Several of the improvements have been intended to increase safety and security.

A new fence has been put up around the skate park at the David F. Recchio Sports Arena.

New security cameras have been installed at several of the Village's parks, including Commons Park. Some



of the cameras also feature high definition night vision in order to capture anyone in the parks after dark.

The Village has installed additional lighting to its five kilometer (5k) path in Commons Park. The track had already been certified as an approved location for officially sanctioned 5k events. The new lighting is increasing the quality of the track and will help secure additional events in the future.

Capital improvement projects have also been underway at several facilities. New lighting is being installed in parking lots. Sidewalks are being replaced at Veteran's Park. New sod is being laid at several locations.

Finally, in an effort to provide more venues for events, Commons Park is getting two new corporate pavilions capable of hosting over 100 people each.

As more health restrictions are rescinded, the Village is looking forward to visitors enjoying all the new improvements.



The Bob Marcello Baseball Complex is getting a brand new 32-foot pavilion.

The playground outside the Recreation Center has a brand new play structure.



NEW PICKLEBALL COURTS COMING

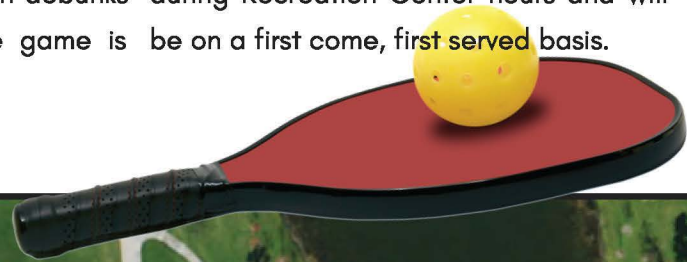
Two years ago, pickleball was called the "fastest growing sport you've never heard of." Today, it's probably the fastest growing sport everyone has heard of.

According to a 2021 report by the Sports & Fitness Industry Association, the number of pickleball players in the U.S.

has grown over 20% since 2019.

The same report found the average age of pickleball players to be 38 years old, which debunks the perception that the game is dominated by seniors.

In response to its exploding popularity, the Village is building four new outdoor pickleball courts at the Recreation Center. The courts will be available during Recreation Center hours and will be on a first come, first served basis.



TWO NEW PAVILIONS PLANNED FOR COMMONS

PHASE 1
BUILDING OPTION 'A'

PHASE 2

Two new large-scale pavilions are on the drawing board for Commons Park. Each one will accommodate over 100 people. They will be on either side of the amphitheater.



THEY'RE BACK!

Young at Heart is back!

Any person 55 and over can register to become a member. Memberships include eight themed luncheons that offer great food and live entertainment.

Registration is at the Royal Palm Beach Recreation Center (100 Sweet Bay Lane) Monday through Friday from 8:00 am to 5:00 pm beginning August 16th and ending on September 17th.

Please don't wait as memberships are limited. Membership fee is \$90.

Luncheons will resume on October 1st and will be held on the 1st Friday of each month at the Royal Palm Beach Cultural Center.

All eight themed luncheons are included with membership. Individual luncheons can be purchased for \$15. Register now as spaces are limited.

Board Meetings will resume on the 3rd Wednesday of every month starting in September and will be held at the Royal Palm Beach Cultural Center. Breakfast will be included.



WHAT YOU NEED TO KNOW BEFORE A STORM

Summer is here in South Florida along with the Atlantic Hurricane Season which runs from June 1 – November 30.

Hurricane hazards come in many forms, including storm surge, heavy rainfall, inland flooding, high winds, tornadoes and rip currents. The best way to deal with these hazards is to be prepared.

If you are planning to be out of town during hurricane season shutters can be installed on unoccupied properties with Village permission. Fill out the **STORM PROTECTION EXTENDED DURATION NOTICE** form available online or at Village Hall.

Before a storm residents may contact the Community Development Department for advice on best securing and protecting their property as well as preparing for limited services and resources. Community Development staff will canvas the Village to notify contractors and residents to secure any materials which may become hazards in the event of landfall.

Before the storm:

- Fuel up vehicles and charge cell phones.
- Double check supplies (Food, water, cash, medications, etc...).
- Install shutters and bring outdoor furniture indoors.
- Monitor local news for watches and warnings (A “watch” means that storm conditions are possible for the area, a “warning” means that storm conditions are expected for the area.).
- Do not trim or cut down trees, do any major yardwork or construction that produces debris once a storm is named unless you or your landscaper/contractor plan to transport debris to SWA facility!
- Once a watch or warning has been issued do not trim vegetation of any kind.

During the storm:

- Stay indoors.
- Turn off and unplug unnecessary electrical appliances.
- Stay away from windows and doors.
- Monitor local news for storm updates.

After the storm:

- Stay indoors until the weather is clear (Do not go outside during the “eye” of the storm.).
- Continue to monitor local news for updates.
- Avoid traveling on roadways. There may be electrical wires down and debris in the roadway.
- Do not use generators indoors!

WHAT YOU NEED TO KNOW AFTER A STORM

Debris Removal:

Storm debris will be removed from rights-of-way, Village owned lands and all areas that have curbside garbage pickup. This includes gated communities with curbside pickup and an indemnity agreement with the Village but does not include communities with dumpster service. Do not block storm water drainage or access to utilities with debris.

Boil Water Notices:

If the water system loses power or water pressure, a boil water notice may be issued. Do not use untreated tap water. Tap water can be used after being brought to a rolling boil for one minute. An alternative is to add eight drops of unscented household bleach to a gallon of water and waiting 30 minutes before consuming.

Community Development Services:

After a storm teams will survey the Village, provide damage assessment reports, and determine if any structures are unsafe. Community Development will provide expedited manual permitting in the event of power outages and can be reached at the Village Hall location or by telephone at (561) 790-5128.

Know Your Flood Zone :

Everyone is at risk – even those who do not live close to rivers, lakes, canals, or the coast. The Village of Royal Palm Beach wants to remind people in moderate to low-risk areas that their risk is reduced, not removed. Call the Engineering Department at (561) 790-5103 to access FEMA's Flood Insurance Rate Maps (FIRM), to learn if a property is in a Special Flood Hazard Area, and if it may be affected by local drainage problems.

Useful Links:

- Sign up to Receive Village Updates: www.royalpalmbeach.com/newsletter/subscriptions
- Palm Beach County Emergency Management – www.discover.pbcgov.org/publicsafety
- FEMA – www.ready.gov/hurricanes
- American Red Cross – www.redcross.org
-

Contact information:

- Emergency – 911. Non-emergency police issues contact PBSO at (561) 688-3400.
- For power outages or to report downed power lines contact FPL at (800) 4OUTAGE or (800) 468-8243.
- For debris removal questions, slow or clogged drainage or blocked roadways contact the Village at (561) 790-5100.
- For water and sewer issues or outages contact Palm Beach County Water Utilities at (561) 740-4600 Option 1.
- For water and sewer issues or outages for residents south of Southern Blvd. contact Village of Wellington Water Utilities at (561) 791-4037.

Our Best Side is Outside

RECREATION CENTER

100 Sweet Bay Lane
Royal Palm Beach, FL 33411
Phone (561) 790-5124
Fax (561) 791-7079

Program Supervisor
Brandon Pendergrass
(561) 790-5189

Office Hours

Monday, Thursday & Friday
8:00 am - 5:00 pm

Tuesday & Wednesday
8:00 am - 6:30 pm

Building Hours

Monday - Friday
8:00 am - 5:00 pm (9:00 pm
beginning in October)

Weekends: Call for latest

Director of Parks and Recreation: Lou Recchio (561) 790-5164

Assistant Director of Parks and Recreation: Mike Mikolaichik (561) 790-5198

CULTURAL CENTER

151 Civic Center Way
Royal Palm Beach, FL 33411
Phone: (561) 790-5196
Fax: (561) 753-1138

Events & Facilities Manager
Steve Poyner (561) 790-5192

Program Coordinator II
Shakeera Thomas (561) 790-5196

By Appointment Only

COMMONS PARK

11600 Poinciana Blvd
Royal Palm Beach, FL 33411
Phone: (561) 753-1232

Events & Facilities Manager
Sylvio Pierre-Louis (561) 790-5140

Program Coordinator II
Kelby Rothenberg (561) 753-1232

Building Hours
Seven Days 8:00 am - 9:00 pm

PARKS OPERATIONS CENTER

Phone: (561) 284-0017
Parks Superintendent
Rich Wishart
(561) 790-3844

Early Childhood & Youth Activities

Co-Ed Youth Basketball League

Ages 5-14

Registration: Begins August 23rd

Evaluations: October (Date TBD by division)

Games: Begin in December

Fee: R/\$100 NR/\$120

Amazing Athletes

Saturday & Weekday Mornings

Classes Begin in October

Ages 2-5

Recreation Center

Fee: Fees vary depending on class (per 6 week session)

Lil Sluggers Baseball

Saturday Mornings Beginning at 9:00 am

Ages 2-5

Recreation Center

Fee: R/\$125NR/\$150 (per 8 week session)

La Petite Dance

Weekday Mornings and Afternoons

Ages 2-13

Recreation Center

Fee:R/\$100 NR/\$120 (per 7 week session)

Quality studio instruction for Tap, Ballet and Jazz. Register now for upcoming sessions. Fees may vary depending on class.

Karate (American Goju)

Mondays and Wednesdays from

6:30pm - 7:30pm

Grades K-12

Recreation Center

Fee:R/\$70 NR/\$85 (Monthly)

Lit Dance (Pop / Hip-Hop Dance)

Tuesdays & Thursdays from 6:00 pm to 7:00 pm

Beginning in October

Ages 13-17

Recreation Center

Fee: Fees may vary depending on class

Tennis

Ages 5 - 17

Camellia Park (6845 Seminole Palms Drive)

Beginner, intermediate and advanced tennis instruction.

Contact Daryl Ahrens at (561) 320-7746 for more information and pricing.



Early Childhood Adventures

Ages 3-5

Recreation Center

Contact Angie Rinehart at earlychildhoodadventures.net for program information and pricing.

Golf

Ages 5-17

Commons Park (11600 Poinciana Blvd)

Beginner, intermediate and advanced Golf instruction.

Contact JP Begley at (561) 906-4914 for more information and pricing



Recreation Center Gymnasium Schedule

Monday-Friday

8:00 am – 9:00 am – Middle School Open Play

9:00 am – 1:00 pm - Pickleball

Afternoon Schedule will be available in October.

Saturday & Sunday hours will be available in October.

Primary Sports Providers

The following organizations conduct sports leagues and are recognized as primary sports providers for the Village of Royal Palm Beach.

Youth Baseball Association of Royal Palm Beach - Baseball & Softball

(561) 876-8091

Register for Fall Season online at www.baseballrpb.com

Royal Palm Beach Soccer, Inc - Soccer

(561) 324-0708

Register for Fall Season online www.royalpalmbeachbstrickers.com

Palms West Athletic Association- Football

(561) 201-7799

Royal Palm Beach Stars - Travel Basketball

(561) 215-5958

<https://savonsacademystars.wixsite.com/savonsacademystars>

Adult &

Knitting & Crocheting Group

Thursday's from 1:00 pm – 3:00 pm

Beginning in October

Recreation Center

Fee: Free (6 week sessions)

Senior Core & Conditioning

Wednesdays from 11:00 am – 12:00 pm

Beginning in October

Recreation Center

Fee: R/\$65 NR/\$75 (per 6 week session)

Senior Chair Yoga

Wednesdays from 3:15 pm – 4:00 pm

Beginning in October

Recreation Center

Fee: R/\$40 NR/\$50 (per 4 week session)

Oil & Acrylic Class

Mondays from 1:00 pm – 3:00 pm

Beginning in October

Recreation Center

Fee: R/\$25 NR/\$30 (per 6 week session)

Advanced Karate (American Goju)

Mondays & Wednesdays from 7:30 pm - 8:30 pm

Recreation Center

Fee:R/\$70 NR/\$85 (monthly)

Total Body Conditioning (COED)

Monday from 6:00 pm – 7:00 pm (8 week sessions)

Wednesday from 6:15 pm - 7:15 pm (8 week sessions)

Saturdays from 9:00 am - 10:00 am (8 week sessions)

Recreation Center

Fee: R/\$40NR/\$50 (per 8 week session)

An aerobic workout with weight training and abdominal core work.

Senior Programs

Yoga

Mondays from 6:00 pm - 7:00 pm (6 week sessions)
 Wednesdays from 8:30 am - 9:15 am & 9:45 am - 10:45 am (6 week sessions)
 Recreation Center
 Fee: R/\$48NR/\$58 (per 6 week session)
 Reduce stress and improve flexibility, balance and strength.

LIT Dance (Pop / Hip-Hop Dance)

Tuesdays & Thursdays from 7:00 pm -8:00 pm
 Beginning in October
 Ages 13-17
 Recreation Center
 Fee: Fees may vary depending on class

Pickleball

Now – Further Notice
 Monday - Friday from 9:00 am – 1:00pm
 Recreation Center
 Fee: R/\$15NR/\$20
 Indoor Pickleball is played in the gymnasium with a racquet and whiffle ball. It is a low impact/low risk activity that is fun for all ages.

Golf

Commons Park (11600 Poinciana Blvd)
 Beginner, intermediate and advanced Golf instruction. Contact JP Begley at (561) 906-4914 for more information and pricing

Fitness Room Membership (16 & Older)

Membership: Now through December 31st, 2021
 Recreation Center

	Resident.	Non-Resident
Individual:	\$70.00	\$85.00
Family (Max of 3):	\$95.00	\$115.00
Daily:	\$2.00	\$2.00



IMPROVEMENTS PLANNED FOR REC CENTER

The Village is moving forward with plans to drastically improve the Recreation Center.

The Village Council gave the green light to apply for state funding to help pay for expansion and renovation.

The expansion will include a new 9,800 square foot gymnasium, four new meeting rooms, a new kitchen, and new restrooms totaling 5,500 square feet.

The project also includes the expansion and resurfacing of the parking lot and new signage.

Special Events

Movie Nights and Concerts in the Park with Food Trucks

Fridays, beginning at 5:00 pm
Commons Park (11600 Poinciana Blvd)

Come join us every Friday evening at Commons Park for either a movie night or concert. Food trucks will be ready to serve starting at 5:00 pm followed by either a live music performance or a feature film beginning at 7:00 pm. For more information visit www.royalpalmbeach.com or call (561) 753-1232.



Rock N' Fall Festival

Friday, October 1st from 5:00 pm to 10:00 pm
Saturday, October 2nd from 1:00 pm to 9:00 pm

Help us bring Commons Park to life with the annual Royal Palm Beach Rock n Fall Festival. The two-day event features a rock concert on Friday evening showcasing a variety of food, craft and beer vendors followed by a Halloween themed event on Saturday. The Saturday portion of the event will include; live entertainment, food vendors, craft vendors, a pumpkin patch, a pumpkin carving contest, costume contests, train rides, a kids fun zone, a haunted house and more! For more information visit www.royalpalmbeach.com or call (561) 753-1232.

Catskill Haunts – Haunted House

Every Thursday, Friday, & Saturday in October from 6:00 pm to 11:00 pm
Commons Park (11600 Poinciana Blvd)

Prepare to be spooked! Catskill Haunts will showcase their Haunted House at Commons Park every Thursday, Friday, and Saturday throughout the month of October from 6:00 pm to 11:00 pm.

The Haunted House will include special effects and live actors. Children under 13 must be accompanied by an adult. For more information on this event you can visit www.royalpalmbeach.com or call (561) 753-1232.



Green Market and Bazaar

October 2021 – April 2022

9:00 am to 1:00 pm

Due to Village Hall Construction

Site To Be Determined



Support your community by shopping for locally grown plants and organic products including a wide selection of produce ranging from fruits and vegetables, herbs, spices and fresh flowers to everyday favorites like fresh baked goods and local honey. You can also enjoy a compliment of artisan and vegan foods, pastries and a unique selection of artists and crafters selling jewelry, handicrafts and other interesting wares. For more information or to become a vendor visit <https://www.rpbgreenmarket.com/>.

Veterans Day Breakfast

Thursday, November 11th

Beginning at 8:00 am

Cultural Center (151 Civic Center Way)

The American Legion Department of

Florida District 11, the Unit 367

Auxiliary, and the Village are

partnering to honor Veterans and their

families by hosting a pancake

breakfast at the Royal Palm Beach

Cultural Center. The event will include

guest speakers and a live performance

by the Royal Palm Beach Community

Band. Call (561) 790-5196 to RSVP.

Space is limited.

Winter Fest

Saturday, December 4th from 1:00 pm to 9:00 pm

Commons Park (11600 Poinciana Blvd)

Kick off the holiday season on Saturday, December 4th at Commons Park. The event will include food vendors, live entertainment, craft vendors, train rides, a kids fun zone, a skating rink, a snow slide, a tree-lighting ceremony, photos with Santa and more! Visit www.royalpalmbeach.com or call (561) 753-1232.



Special Occasions

AT THE VILLAGE OF ROYAL PALM BEACH
CULTURAL CENTER





HALF BANQUET ROOM



MEETING ROOM

Events and Meetings

Full Banquet Room

(2,400-square-foot)

can accommodate 160 people (banquet style) and 300 (theater style)

Half Banquet Room

(1,200-square-foot)

can seat up to 80 people (banquet style) and 150 people (theater style)

The Colony Room (600 sq. ft.)

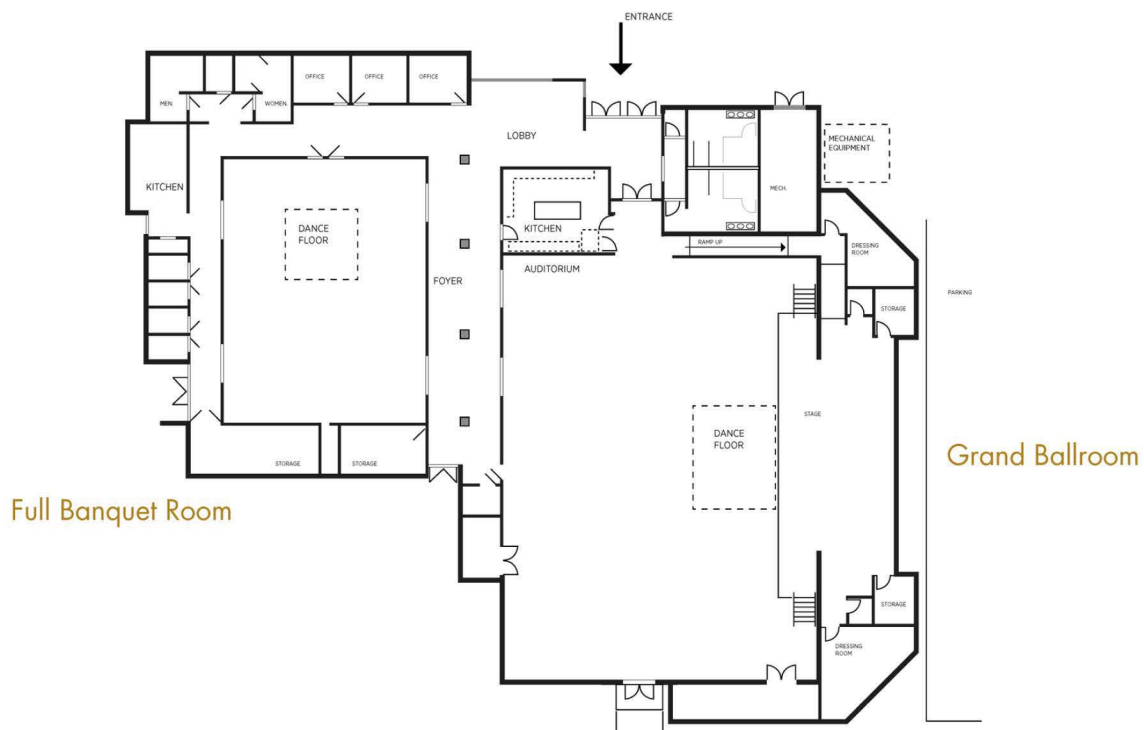
The Willows Room (600 sq. ft.)

La Mancha Room (600 sq. ft.)

Crestwood Room (600 sq. ft.)

Each room can accommodate 40 people (banquet style) and 50 (theater style).

These carpeted rooms are perfect for small social events and other small private parties or meetings. 70" flat panel TV, state of the art built in sound system, wireless high-speed internet access, complete audio/visual equipment, and adjustable sound and lighting.



Full Banquet Room

Grand Ballroom



GRAND BALLROOM

Grand Ballroom (4,500 sq. ft. auditorium with stage)
 can accommodate up to 295 people (banquet style) and 600 (theater style)

Perfect for a larger wedding or event, the Grand Ballroom allows space for additional amenities available for reservation including, but not limited to, a portable dance floor, dressing room, podium, theatrical stage lighting and buffet style tables.

Room Rates

All rates listed are hourly unless otherwise noted. For non-profits, the resident rate applies. For all other organizations, the non-resident rate applies.

Grand Ballroom	Resident	Non-Resident	Minimum Hours
Peak (Saturday - Sunday)	\$200	\$300	6hrs
	\$2,400	\$3,600	All Day
Monday - Friday	\$150	\$200	4hrs
	\$1,800	\$2,400	All Day

Security Deposit \$1000

Full Banquet Room	Resident	Non-Resident	Minimum Hours
Peak (Saturday - Sunday)	\$150	\$210	6hrs
	\$1,800	\$2,700	All Day
Monday - Friday	\$100	\$140	4hrs
	\$1,200	\$1,500	All Day

Security Deposit \$500

1/2 Banquet Room	Resident	Non-Resident	Minimum Hours
Peak (Saturday - Sunday)	\$75	\$105	6hrs
	N/A	N/A	All Day
Monday - Friday	\$50	\$70	4hrs
	\$600	\$840	All Day

Security Deposit \$250

Meeting Rooms	Resident	Non-Resident	Minimum Hours
Peak (Saturday - Sunday)	N/A	N/A	N/A
Monday - Friday	\$25	\$35	2hrs
Security Deposit \$125			

Additional Amenities & Rates

Storage Room	\$100/mo.
Piano	\$250/event
Dance Floor	\$250/event
Catering/Kitchen Charge	\$200 Grand Ballroom \$100 Full Banquet Room \$50 Half Banquet Room

All rental fees are subject to applicable sales tax. No sales tax for staff costs. All pricing includes tables, chairs, and room setup.



*Our facility houses two kitchens which are equipped with refrigeration, warming ovens, prep tables, ice machines, utility sinks, and more.

Thank You

Thank you for taking the time to learn more about the Village of Royal Palm Beach Cultural Center. Visit us online to submit a Room Reservation Request, or schedule an appointment by contacting the Cultural Center at (561) 790-5196.

COMMUNITY CONNECTIONS

Commons Park Rental Facilities

Unlike Any Other Park
— in the area —

It features a 10-acre Great Lawn, Sporting Center, Banquet Garden, Wedding Pavilion, Interactive Fountain, 20 plus Picnic Pavilions, Playgrounds, Volleyball Courts, Driving Range, Putting Course, Short Game Practice Area, Kayaking, and so much more!





	SPORTING CENTER		PLAYGROUND
	BANQUET GARDEN		RESTROOM
	PAVILION		



Three miles of paths wind their way around 160 beautiful acres, a 19 acre lake and surround a beautiful 17,000 square foot facility available for your special occasion.

A three story Sporting Center offers a dining area along with a 1900 square foot furnished patio area all on the main floor, with a banquet room and veranda with seating for 200 located on the third floor.



PAVILION

All Day Rental Price	Resident Not-For-Profit	Non-Resident For-Profit
Small Pavilion seats 8-16	\$50	\$100
Large Pavilion seats 32-40	\$100	\$200



WEEKDAY RATES

Monday-Friday – 9am-11pm	Resident Not-For-Profit	Non-Resident For-Profit	Minimum Hours
Sporting Center Banquet Room Veranda seats 150	\$100	\$150	2hrs
Outdoor Banquet Garden	\$50	\$100	2hrs

All rates listed are hourly unless otherwise noted. For non-profits, the resident rate applies. For all other organizations, the non-resident rate applies.

Wedding/Party Package

Banquet Room, Outdoor Banquet Garden and Wedding Pavilion	\$800	\$1,200	All Day
---	-------	---------	---------

DAMAGE DEPOSIT: \$500

* Set-up and clean-up times are included in the rental time. Tax not included in price shown.

WEEKEND RATES

Saturday-Sunday – 9am-11pm	Resident Not-For-Profit	Non-Resident For-Profit	Minimum Hours
Sporting Center Banquet Room Veranda seats 150	\$150	\$200	6hrs (9am-3pm or 5pm-11pm)
Outdoor Banquet Garden	\$75	\$150	6hrs (9am-3pm or 5pm-11pm)

** Booking deposit of 50% of the rental cost is due in order to make the reservation.

*** Additional hour until 12am can be added to the rental time at the hourly rate.

Wedding/Party Package

Banquet Room, Outdoor Banquet Garden and Wedding Pavilion	\$1,500	\$2,000	All Day
---	---------	---------	---------

Parks & Amenities

PRESERVATION PARK (83 Acres) 100 Sweet Bay Lane

33,000 sq. ft. Recreation Center with a gymnasium, seven multi-purpose rooms and weight room. This park also contains one lighted R/C race track, one lighted skateboard park, six lighted soccer/football fields with concession, playscape, four lighted basketball courts, an off-road bike and walking trail through a twenty acre natural area.

WETLAND PARK (10 Acres) Crestwood Blvd. South

Paved walking trail, park benches and boardwalk.

CULTURAL CENTER (8 Acres) 151 Civic Center Way

16,500 sq. ft. building with a large Grand Ball Room, four multi-purpose banquet rooms and two kitchens. Facility is available for rentals.

LAKESIDE CHALLENGER PARK (4 Acres) 701 Royal Palm Beach Blvd

A passive park with one gazebo, a fishing dock, park benches and a restroom facility.

CAMELLIA PARK (8 Acres) 6845 Camellia Park Drive

Two softball fields (one lighted), six lighted tennis courts, four bocce courts, one sand volleyball court, playscape, pavilion, four racquetball courts and a restroom facility.

BOBBIE JO LAUTER PARK (2 Acres) 179 Sandpiper Ave

A passive park with benches, bike racks, two picnic pavilions and playscape.

BOB MARCELLO BASEBALL COMPLEX (23 Acres) 100 Wildcat Way

Eight lighted baseball fields, one lighted basketball court, two lighted tennis courts, picnic pavilion, jogging trail, two playscapes and three restroom facilities, three pavilions and concession facilities.

H.L. JOHNSON (9 Acres) 3701 Royal Palm Beach Blvd.

Nature trail/exercise stations and park benches.

EARTHDAY PARK (2 Acres) 135 Rivera Avenue

A passive park with large pavilion and park benches.

TODD A. ROBINER PARK (6 Acres) 350 Las Palmas Avenue

Four sand volleyball courts, two basketball courts, playscape, picnic pavilion, new restroom facility with an outside shower, fishing dock and a doggie "Bark Park".

PIPPIN PARK (2 Acres) Pippin Lane

Fishing dock, canoe/kayak launch, picnic pavilion, dog park, basketball court, playscape and two barbeque grills.

HOMEPLACE PARK (3 Acres) Grandview Circle

Playscape, pavilion, fishing dock, basketball court, benches, dog park and open areas.

PENZANCE PARK (1 Acre) 10100 Penzance Lane

Fishing dock, playscape and park benches.

GRANDVIEW LINEAR PARK (2 Acres) Grandview Way

Park benches and walkway.

MOONLIGHT PARK (1 Acre) 1041 Moonlight Way

Playscape, gazebo with picnic tables and park benches.

FERRIN MEMORIAL PARK (8 Acres) 11921 Okeechobee Blvd.

Three lighted softball fields complex with restroom/concession facility and walking trail.

PINE ROAD PARK (5 Acres) 2700 Pine Road

Paved walking path, two basketball courts, two small picnic pavilions, neighborhood dog park and open areas.

VETERANS PARK (5 Acres) 1036 Royal Palm Beach Blvd.

Playscape, swings, interactive fountain, café, a market building, amphitheater, walking path, waterfall, two large picnic pavilions with grills, eight small gazebos, outdoor classroom, two restroom facilities and parking for 110.

LINDSAY EWING PARK (4 Acres) Linnet Lane

Baseball field, multi-purpose field, pavilion and restroom facility.

VILLAGE HALL (16 Acres) 1050 Royal Palm Beach Blvd.

Village Hall, Fire Department, Police Station, Community Development Department and walking trail.

COMMONS PARK (160 Acres) 11600 Poinciana Blvd.

Features a ten acre great lawn, a fifteen acre lake, sporting center facility, banquet garden, wedding pavilion, two playscapes, interactive fountain, café, walking paths, two large picnic pavilions with grills, twenty small picnic pavilions, two volleyball courts, golf driving range, putting course, short game area, dog park and so much more!.

Picnic Pavilion

Plan your child's next birthday party, family picnic or social gathering at one of our picnic pavilions in Royal Palm Beach. Reservations are accepted in person at the Royal Palm Beach Recreation Center and online at RoyalPalmBeach.com.

VILLAGE HALL IS A CLICK AWAY

The Village of Royal Palm Beach is making it easier than ever for you to reach out and get results.

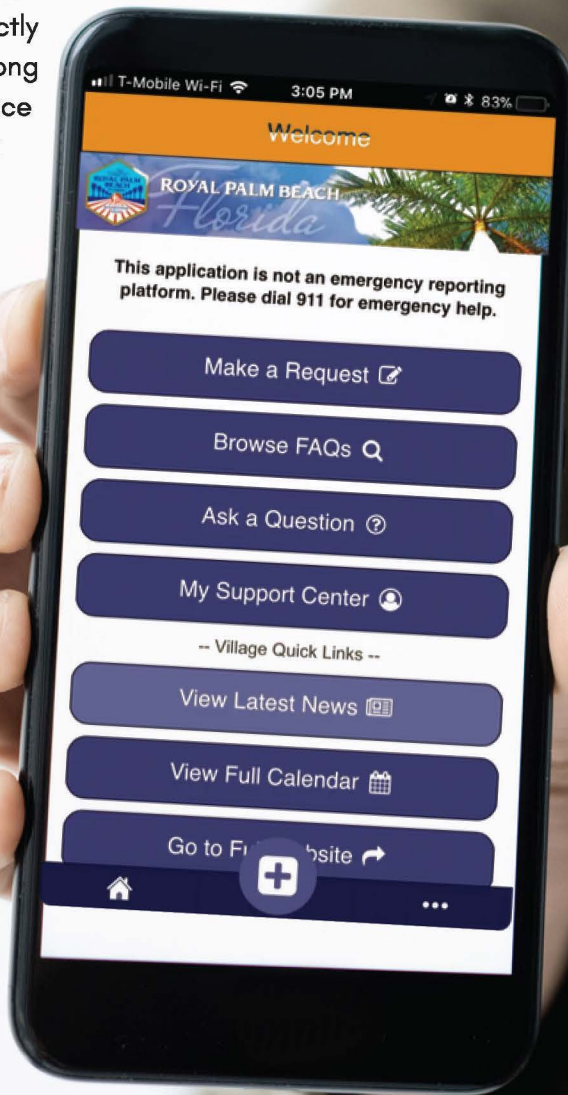
From your computer to your cell phone, you are never more than a click away from Village Hall.

The "RPB City Support" is a free mobile app for smartphones that allows residents to do everything from reporting potholes in the street to missed trash pickups to an illegally parked car. The app allows you to track your work orders with your phone or tablet from anywhere.

Issues or questions can be sent directly to the Village along with pictures, voice messages, and a geo-tagged location where applicable.

The app also includes links to Village's News and Announcements, Calendar, Parks Information, and Official Website.

Meanwhile, Village efforts to encourage online services are proving successful as a greater number of residents are making the click instead of making the trip. From submitting permit applications to meeting remotely with Village staff, online services allow members of the public to receive services while never having to visit Village Hall.



RoyalPalmBeach.com/support



VILLAGE OF ROYAL PALM BEACH

**1050 ROYAL PALM BEACH BLVD. |
ROYAL PALM BEACH, FL 33411 |
(561) 790-5100 | FX: (561) 790-5174**

ROYALPALMBEACH.COM

