

VILLAGE OF ROYAL PALM BEACH, FLORIDA

PROJECT NAME: **La Mancha Avenue Drainage**
PROJECT NUMBER: **SW2504, FM# 453182-1**

ADDENDUM NUMBER: THREE

DATE OF ISSUANCE: July 29, 2025

TO: Prospective Bidders

THIS ADDENDUM NO. Three INCLUDES THE FOLLOWING:

Bid Documents

- 1) Remove pages BP-17 and BP-18, and replace with the Addendum 3 versions.

Plans

- 1) Remove sheets C-13 and C-21, and replace with the Addendum 3 versions.

APPROVED BY: Adamo DiSisto, P.E., Project Engineer



ACKNOWLEDGMENT OF RECEIPT: _____

Bidder

BID PROPOSAL FORM

Project Name:		La Mancha Avenue Drainage			
Project No.:		SW2504			
Item No.	Description	Unit	Quantity	Unit Price	Total Cost
0101 1	Mobilization	LS	1		
0102 1	Maintenance of Traffic	LS	1		
0104 18	Inlet Protection System	EA	35		
0210-1-8	Reworking Limerock Base, 4"	SY	7,907		
0334-1-13	Superpave Asphaltic Concrete, Traffic C	TN	435		
0425 4	Inlets, Adjust	EA	9		
0425 5	Manhole, Adjust	EA	6		
0425 6	Valve Boxes, Adjust	EA	5		
RPB 0430 50 1	Dewatering for Pipe Installation	LS	1		
RPB 0430 50 2	Contingency: Wellpoint Dewatering	LF	1		
0440 1 10	Underdrain, Type 1	LF	4,604		
0570 1 119	Resod Grass Disturbed by Construction - St. Augustine Floratam	SY	3,581		
0580-12-34	Chemical Root Tree Barrier - 20"	LF	411		
0590 70 1	Irrigation System Repairs	LS	1		
711-11-121	Thermoplastic, Standard, White, Solid, 6"	LF	4,576		
711-11-125	Thermoplastic, Standard, White, Solid, 24" for Stop Line and Crosswalk	LF	15		
711-11-221	Thermoplastic, Standard, Yellow, Solid, 6"	LF	4,496		
1000-100-7	Subsurface Utility Exploration (SUE) Quality Level "A", per conflict	LO	5		
RPB 1055-11-374	Cleanout and Fittings Complete, F&I, per cleanout	EA	16		
RPB 1055-11-394	Utility Conflict Resolution, Complete, F&I, per conflict	EA	5		
TOTAL					

PAY ITEM NOTES:	
0101-1	ALL COSTS FOR MOBILIZATION INCLUDES, CONSTRUCTION SITE SAFETY FENCING, TESTING, SURVEYING, RECORD DRAWINGS, DOCUMENTS FOR CONTRACT COMPLIANCE, AND DEMOBILIZATION. MOBLIZATION SHALL NOT EXCEED 10% OF THE SUM OF THE ITEMS BELOW.
0104-18	COVERS ALL SWPPP ACTIVITIES RELATED TO INLETS AND YARD DRAINS, INCLUDING PERMITTING, REPORTING, INSPECTIONS. MAINTENANCE, WASTE MANAGEMENT, VEHICLE CONTROLS. DUST CONTROLS, AND STABILIZATION.
0210-1-8	REWORKING LIMEROCK BASE SHALL INCLUDE FIRST LIFT OF ASPHALT (1") EXCLUDING THE 4' WIDE UNDERDRAIN TRENCH WITH ASSOCIATED PRIME AND TACK COATS.
0334-1-12	SUPERPAVE SHALL INCLUDE THE FINAL LIFT 1" OF ASPHALT OVER THE ENTIRE PROJECT AREA WITH ASSOCIATED PRIME AND TACK COATS.
0425-4	PAY ITEM INCLUDES PROTECTION OF THE EXISTING INLET, CORE DRILL EXISTING DRAINAGE STRUCTURE AND CONNECT UNDERDRAIN PIPE.
0425-5	PROTECT AND ADJUST ALL EXISTING MANHOLES WITHIN PROJECT LIMITS TO NEW SURFACE AND MEET PBCWUD STANDARDS.
0425-6	PROTECT AND ADJUST ALL VALVES WITHIN PROJECT LIMITS TO NEW SURFACE AND MEET PBCWUD STANDARDS.
RPB 0430-50-1	INCLUDES ANY PERMITTING, PLANNING OR EFFORTS FOR SUMP DEWATERING.
RPB 0430-50-2	CONTINGENCY ITEM FOR UNIT COST OF ALL ACTIVITIES REQUIRED FOR WELLPOINT DEWATERING.
0440-1-10	UNDERDRAIN PIPE SHALL INCLUDE CLEANOUTS AS SHOWN ON THE DRAWINGS AND PAVEMENT RESTORATION: TRENCH BACKFILL, BASE, AND A 1-INCH FIRST LIFT OF ASPHALT OVER THE TRENCH.
0570-1-119	ESTIMATED QUANTITY CONSIDERS 7' WIDTH OF TURF PER LINEAR FOOT OF UNDERDRAIN.
0590-70-5	INCLUDES CUT AND CAP EXISTING IRRIGATION PIPES IN THE SWALE IMPACTED BY THE PROJECT. ESTIMATED QUANTITY, ACTUAL QUANTITY TO BE DETERMINED FOLLOWING EXCAVATION.
RPB 1055-11-374	INCLUDES: ALL ITEMS ASSOCIATED WITH A CLEAN OUT: ALL FITTINGS, BENDS, WYES, SWEEPS, RISERS, PIPES, CAPS, CURB REPLACEMENTS, MARKERS, GRASS REPLACEMENT, BACKFILL, ETC.
RPB 1055-11-394	INCLUDES ALL ITEMS ASSOCIATED WITH RESOLVING EACH CONFLICT WITH EXISTING UNDERGROUND UTILITIES: ALL CLEAN OUTS, FITTINGS, WYES, SWEEPS, RISERS, PIPES, CAPS, CURB REPLACEMENT, MARKERS, GRASS REPLACEMENT, FLOWABLE FILL, BACKFILL, ETC. ESTIMATED QUANTITY IS LISTED. ACTUAL QUANTITY SHALL BE DETERMINED FOLLOWING THE SUE INVESTIGATION.



Designed:	By:
Drawn:	M.E.
Checked:	D.G.

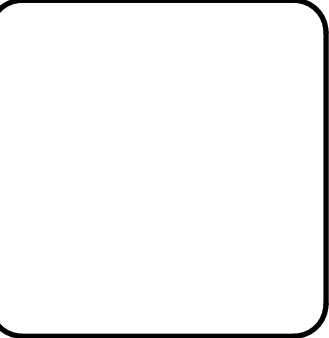
No.	Revisions	Date	By
1	Revise chemical root barrier detail	7/29/2025	AD

ALL RIGHTS RESERVED. NO PART OF THIS DOCUMENT MAY BE REPRODUCED, STORED IN A RETRIEVAL SYSTEM, OR TRANSMITTED, IN ANY FORM OR BY ANY MEANS, ELECTRONIC, MECHANICAL, PHOTOCOPYING, RECORDING, OR OTHERWISE, WITHOUT THE PRIOR WRITTEN AUTHORIZATION OF ERDMAN ANTHONY. COPYRIGHT © 2022 Erdman Anthony

**ERDMAN ANTHONY**
5405 OKEECHOBEE BOULEVARD, SUITE 200
WEST PALM BEACH, FLORIDA 33417
TELEPHONE 561-757-9723
FAX 561-757-7334

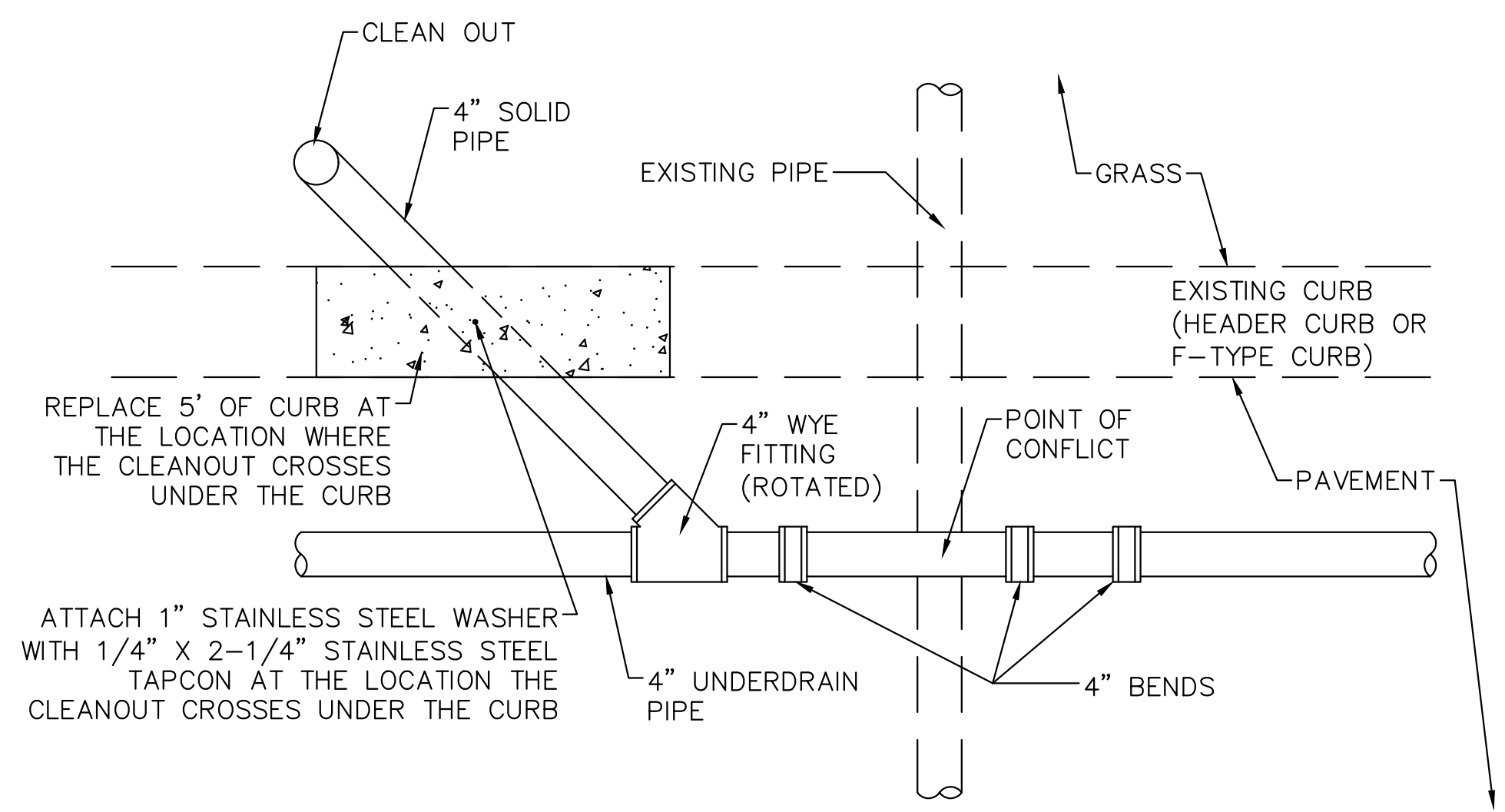
VILLAGE OF ROYAL PALM BEACH, FLORIDA
LA MANCHA AVENUE UNDERDRAINS

UNDERDRAIN DETAILS



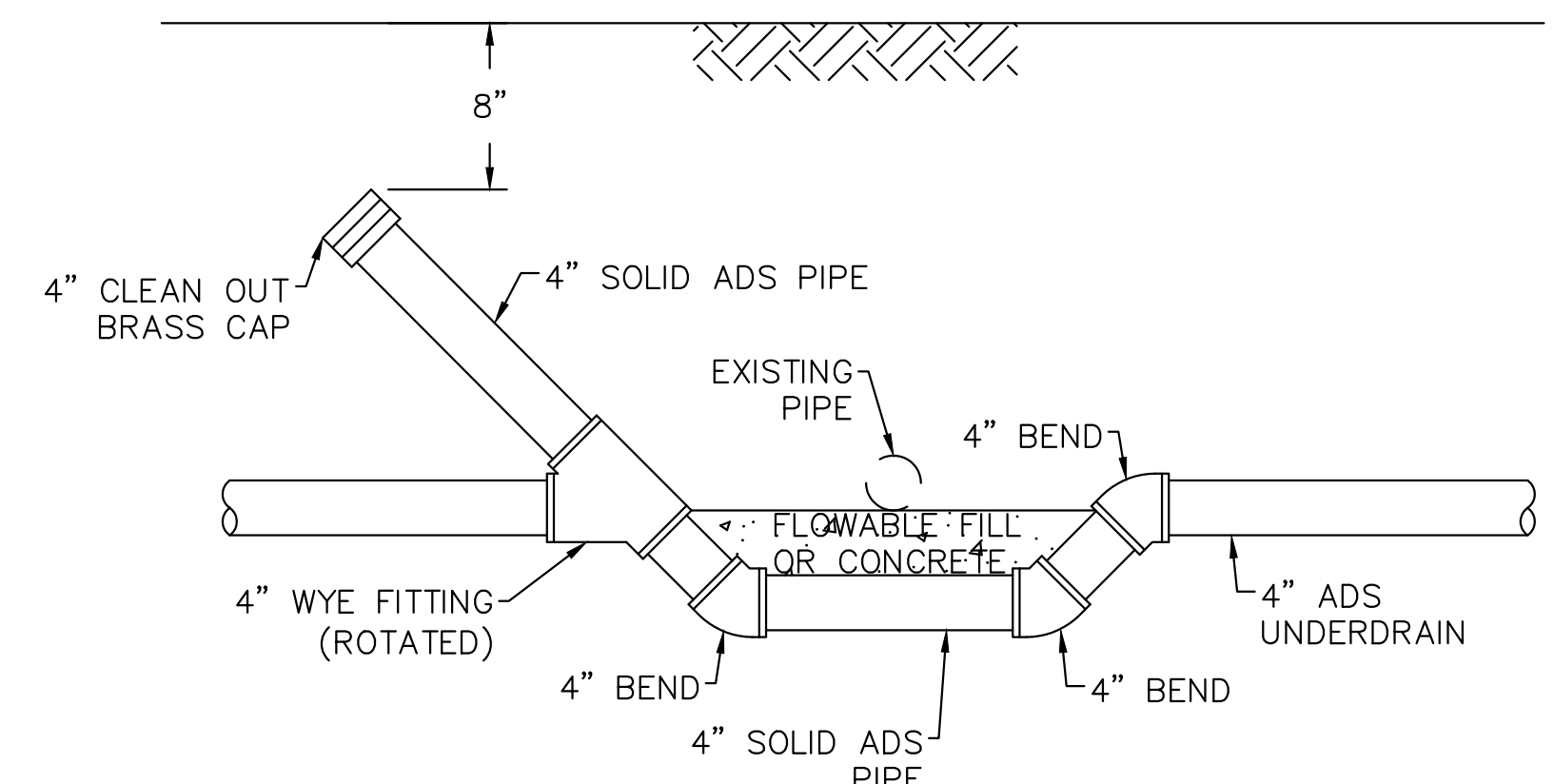
Drawing Reference Number
C-13
Sheet ___ of ___

- NOTES:
1. PAY ITEM 1055-31-108 UNDERDRAIN DEFLECTION UNDER EXISTING PIPE IS A CONTINGENCY ITEM. ACTUAL QUANTITIES SHALL BE BASED ON FIELD CONDITIONS.
 2. 6" CLEAN OUTS SHALL HAVE A BRASS CAP.
 3. THIS PAY ITEM INCLUDES ALL MATERIALS AND LABOR REQUIRED TO PERFORM THE DEFLECTION PER THESE DETAILS.
 4. SEE ALSO CLEAN OUT DETAILS ON C-14.
 5. ALL ITEMS SHOWN HEREIN ASSOCIATED WITH THE CONFLICT RESOLUTION, INCLUDING THE CLEANOUT, FITTINGS, BEND, WYES, SOLID PIPE, CURB, MARKER, BRASS CAP, FLOWABLE FILL, ETC, SHALL BE PAID UNDER THE "DEFLECTION PAY ITEM



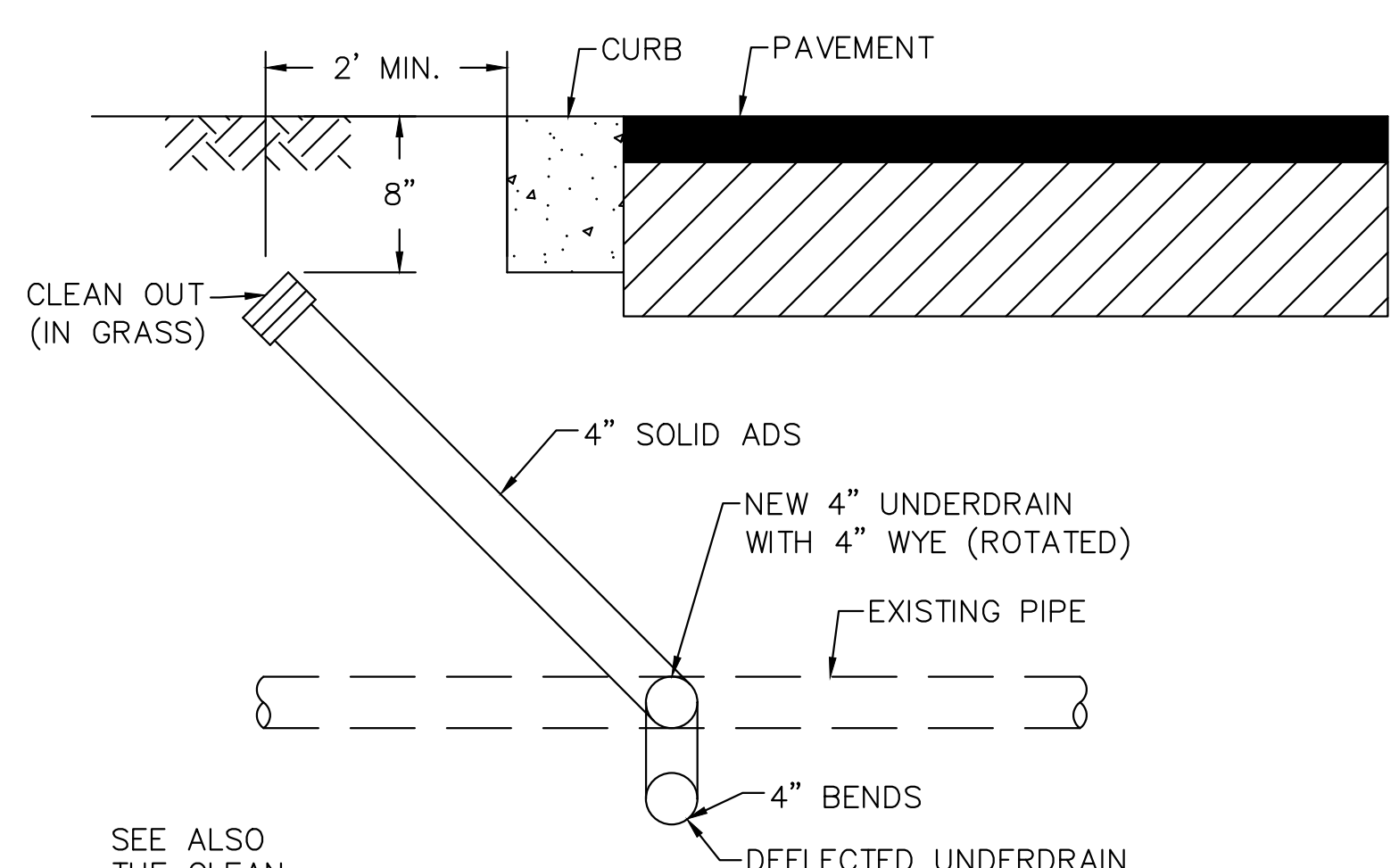
PLAN VIEW
CONFLICT RESOLUTION DETAIL

N.T.S.



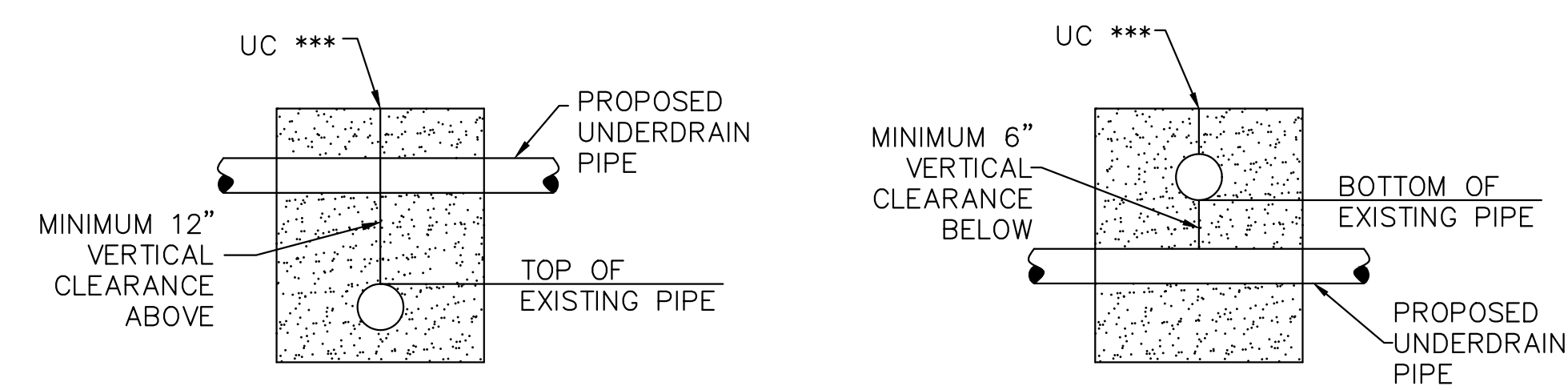
PROFILE VIEW
CONFLICT RESOLUTION DETAIL

N.T.S.



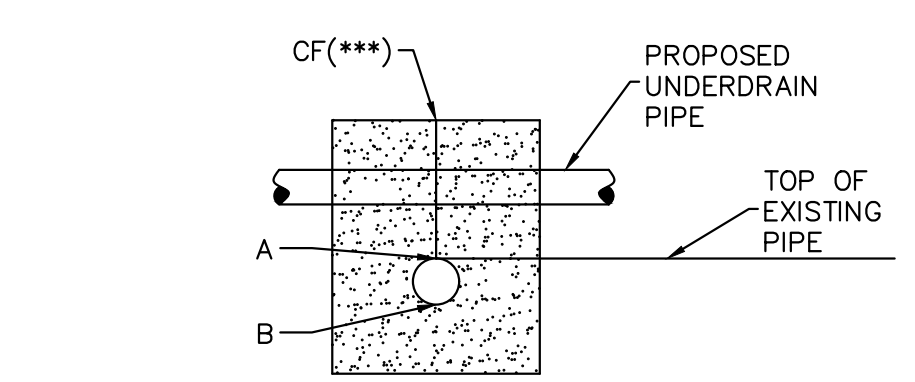
SECTION
CONFLICT RESOLUTION DETAIL

N.T.S.



UC *** = POINT AT CONFLICT OF PIPE CROSSING
(REFER TO POINT TABLES ON SHEET XX
FOR APPROXIMATE NORTHING AND EASTING)

*** REPRESENTS: SWR FOR SANITARY SEWER CONFLICTS
WTR FOR WATER CONFLICTS STM FOR STORM SEWER CONFLICTS



CF(***) = POINT AT CONFLICT (WHERE UTILITY PIPE CROSSING VERTICALLY ABOVE OR BENEATH THE PROPOSED UNDERDRAIN PIPE, AND LOCATED 3'± BEHIND BACK OF CURB)

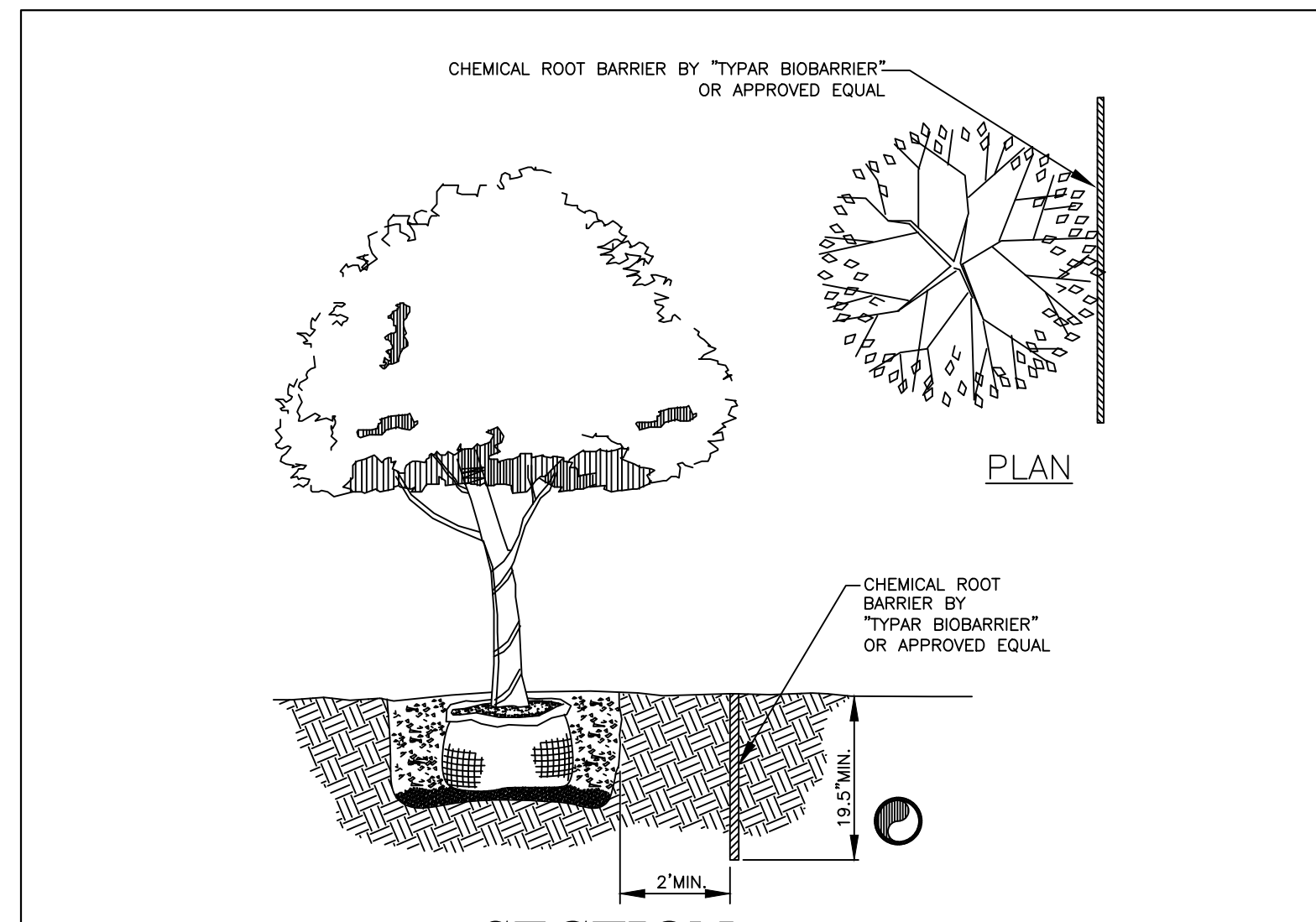
UTILITY CONFLICT POINTS

N.T.S.

- NOTES
1. AT UC(***), PROVIDE (X, Y) STATE PLANE HORIZONTAL COORDINATE.
 2. A AND B ARE DISTANCES/DEPTH RELATIVE TO TOP OF BACK OF CURB.
 3. *** REPRESENTS:
SWR FOR SANITARY SEWER CONFLICTS
WTR FOR WATER CONFLICTS
STM FOR STORM SEWER CONFLICTS
 4. CONTRACTOR SHALL SUBMIT A SPREADSHEET WITH THE INFORMATION SHOWN BELOW FOR ALL CONFLICTS SHOWN ON PLANS AND/OR MARKED IN THE FIELD.

POINT #:	
(X,Y) FOR CF(*) =	
DEPTH, A =	
DEPTH, B =	
PIPE MATERIAL =	

5. THE VILLAGE SHALL HAVE TWO WEEKS TO REVIEW THE RESULTS OF THE POTHOLING SURVEY RESULTS AND MAKE ANY REQUIRED ADJUSTMENTS TO THE PLANS. NO UNDERDRAIN WORK MAY BEGIN UNTIL AFTER THIS TWO WEEK PERIOD. CONTRACTOR SHALL ACCOUNT FOR THESE TWO WEEKS IN BID AND SCHEDULE.



SECTION
CHEMICAL ROOT BARRIER

N.T.S.

46W

ESTIMATE QUANTITIES				
Pay Item Number	Pay Item Description	Unit of Measure	Total Quantity	
			P	F
0101 1	Mobilization	LS	1	
0102 1	Maintenance of Traffic	LS	1	
0104 18	Inlet Protection System	EA	35	
0210 1 8	Reworking Limerock Base, 4"	SY	7,907	
0334 1 12	Superpave Asphaltic Conc, Traffic B	TN	435	
0425 4	Inlets, Adjust	EA	9	
0425 5	Manhole, Adjust	EA	6	
0425 6	Valve Boxes, Adjust	EA	5	
RPB 0430 50 1	Dewatering for Pipe Installation	LS	1	
RPB 0430 50 2	Contingency: Wellpoint Dewatering	LF	1	
0440 1 10	Underdrain, Type I	LF	4,604	
0570 1 130	Performance Turf, Sodding- St Augustine Floratam	SY	3,581	
0580 12 34	Chemical Root Tree Barrier	LF	411	
0590 70 5	Irrigation System- Modify Existing System	LS	1	
0711 11121	Thermoplastic, Standard, White, Solid, 6"	LF	4,576	
0711 11125	Thermoplastic, Standard, White, Solid, 24" for Stop Line and Crosswalk	LF	15	
0711 11221	Thermoplastic, Standard, Yellow, Solid, 6"	LF	4,496	
1000 100 7	Subsurface Utility Exploration (SUE) Quality Level "A", per conflict	LO	5	
RPB 1055 11 374	Cleanout and Fittings Complete, F&I, per cleanout	EA	16	
RPB 1055 11 394	Utility Conflict Resolution, Complete, F&I, per conflict	EA	5	

PAY ITEM NOTES:

0101-1	ALL COSTS FOR MOBILIZATION INCLUDES, CONSTRUCTION SITE SAFETY FENCING, TESTING, SURVEYING, RECORD DRAWINGS, DOCUMENTS FOR CONTRACT COMPLIANCE, AND DEMOBILIZATION. MOBILIZATION SHALL NOT EXCEED 10% OF THE SUM OF THE ITEMS BELOW.
0104-18	COVERS ALL SWPPP ACTIVITIES RELATED TO INLETS AND YARD DRAINS, INCLUDING PERMITTING, REPORTING, INSPECTIONS. MAINTENANCE, WASTE MANAGEMENT, VEHICLE CONTROLS. DUST CONTROLS, AND STABILIZATION.
0210-1-8	REWORKING LIMEROCK BASE SHALL INCLUDE FIRST LIFT OF ASPHALT (1") EXCLUDING THE 4' WIDE UNDERDRAIN TRENCH WITH ASSOCIATED PRIME AND TACK COATS.
0334-1-12	SUPERPAVE SHALL INCLUDE THE FINAL LIFT 1" OF ASPHALT OVER THE ENTIRE PROJECT AREA WITH ASSOCIATED PRIME AND TACK COATS.
0425-4	PAY ITEM INCLUDES PROTECTION OF THE EXISTING INLET, CORE DRILL EXISTING DRAINAGE STRUCTURE AND CONNECT UNDERDRAIN PIPE.
0425-5	PROTECT AND ADJUST ALL EXISTING MANHOLES WITHIN PROJECT LIMITS TO NEW SURFACE AND MEET PBCWUD STANDARDS.
0425-6	PROTECT AND ADJUST ALL VALVES WITHIN PROJECT LIMITS TO NEW SURFACE AND MEET PBCWUD STANDARDS.
RPB 0430-50-1	INCLUDES ANY PERMITTING, PLANNING OR EFFORTS FOR SUMP DEWATERING.
RPB 0430-50-2	CONTINGENCY ITEM FOR UNIT COST OF ALL ACTIVITIES REQUIRED FOR WELLPOINT DEWATERING.
0440-1-10	UNDERDRAIN PIPE SHALL INCLUDE CLEANOUTS AS SHOWN ON THE DRAWINGS AND PAVEMENT RESTORATION: TRENCH BACKFILL, BASE, AND A 1-INCH FIRST LIFT OF ASPHALT OVER THE TRENCH.
0570-1-119	ESTIMATED QUANTITY CONSIDERS 7' WIDTH OF TURF PER LINEAR FOOT OF UNDERDRAIN.
0590-70-5	INCLUDES CUT AND CAP EXISTING IRRIGATION PIPES IN THE SWALE IMPACTED BY THE PROJECT. ESTIMATED QUANTITY, ACTUAL QUANTITY TO BE DETERMINED FOLLOWING EXCAVATION.
RPB 1055-11-374	INCLUDES: ALL ITEMS ASSOCIATED WITH A CLEAN OUT: ALL FITTINGS, BENDS, WYES, SWEEPS, RISERS, PIPES, CAPS, CURB REPLACEMENTS, MARKERS, GRASS REPLACEMENT, BACKFILL, ETC.
RPB 1055-11-394	INCLUDES ALL ITEMS ASSOCIATED WITH RESOLVING EACH CONFLICT WITH EXISTING UNDERGROUND UTILITIES: ALL CLEAN OUTS, FITTINGS, WYES, SWEEPS, RISERS, PIPES, CAPS, CURB REPLACEMENT, MARKERS, GRASS REPLACEMENT, FLOWABLE FILL, BACKFILL, ETC. ESTIMATED QUANTITY IS LISTED. ACTUAL QUANTITY SHALL BE DETERMINED FOLLOWING THE SUE INVESTIGATION.

ADDENDUM 3
7/29/2025



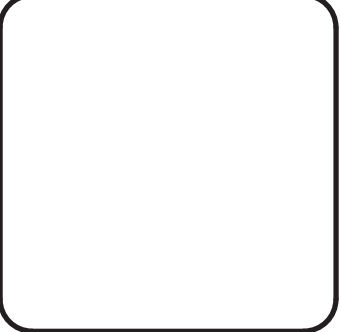
Designed:	M.E.
Drawn:	M.E.
Checked:	A. D.G.

No.	Revisions	Date	By
1	Revise item descriptions for: RPB 0430-50-1 and RPB 1055-11-394 Add item RPB-043050-2	7/29/2025	AD

ALL RIGHTS RESERVED. NO PART OF THIS DOCUMENT MAY BE REPRODUCED, STORED IN A RETRIEVAL SYSTEM, OR TRANSMITTED, IN ANY FORM OR BY ANY MEANS, ELECTRONIC, MECHANICAL, PHOTOCOPYING, RECORDING, OR OTHERWISE WITHOUT THE PRIOR WRITTEN AUTHORIZATION OF ERDMAN ANTHONY. © COPYRIGHT 2022 Erdman Anthony



VILLAGE OF ROYAL PALM BEACH, FLORIDA
LA MANCHA AVENUE
UNDERDRAINS
ESTIMATED QUANTITIES



Drawing Reference Number
C-21
Sheet ____ of ____