

Est. 1988

Rick Gonzalez, AIA
President
FL License AR0014172
120 South Olive Ave. Ste. 210,
West Palm Beach, FL 33401
P (561) 659-2383
www.regarchitects.com



Village Hall of
Royal Palm Beach

1050 Royal Palm Beach Blvd.,
Royal Palm Beach, FL 33411

| NO. | DATE | DESCRIPTION |
|-----|---------|-------------|
| 1 | 6/16/21 | ADDENDA #1 |

| | |
|----------|-------------|
| DATE | 05-28-2021 |
| DESIGNER | REG |
| DRAWN | TW/RL/BC/BF |
| CHECKED | MHA/REG |
| REG # | 19024 |

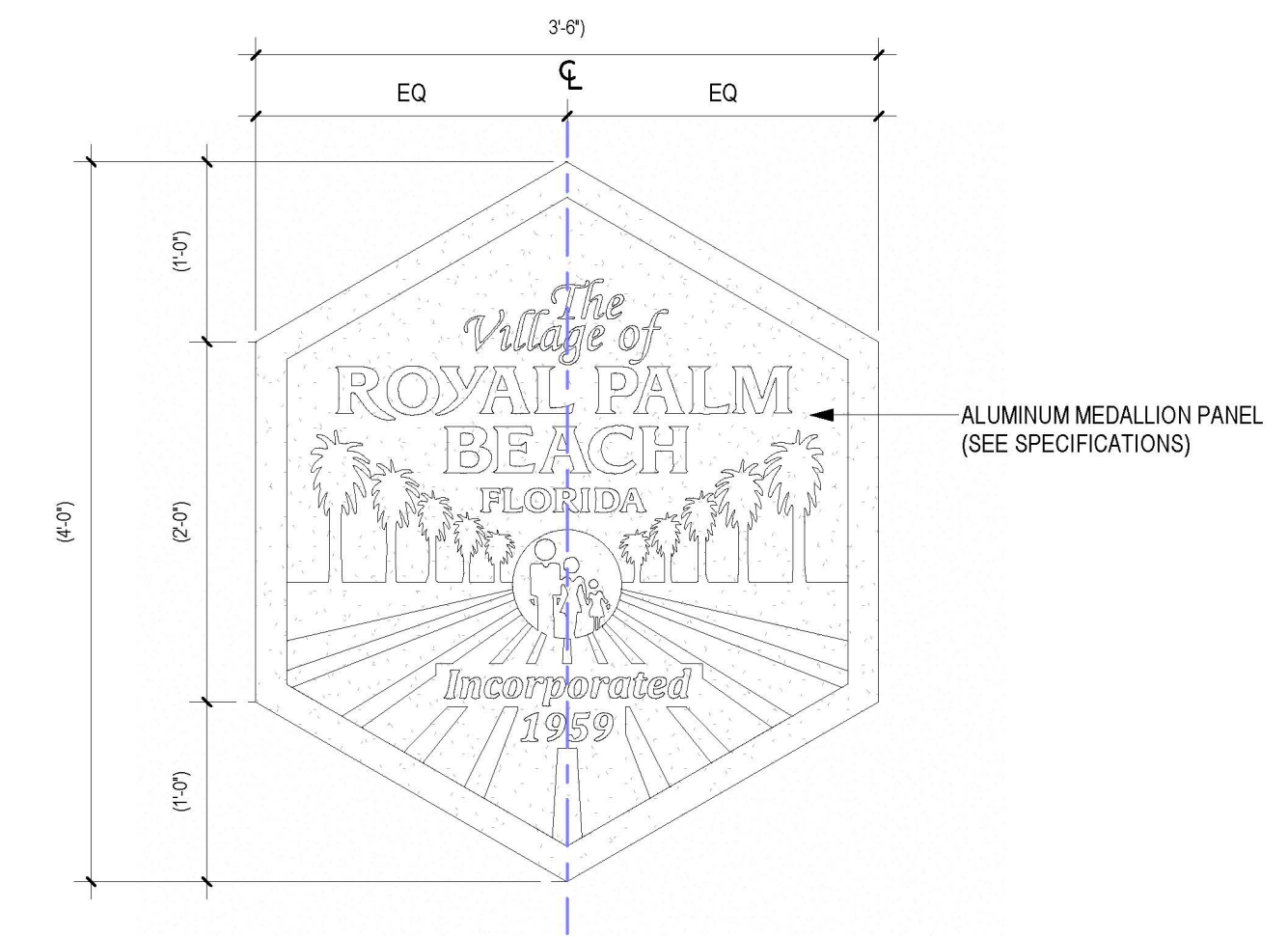
© REG 2020

OWNERSHIP AND USE OF THESE DOCUMENTS & SPECIFICATIONS AS INSTRUMENTS OF SERVICE ARE AND SHALL REMAIN THE PROPERTY OF THE ARCHITECT WHETHER THE PROJECT THEY ARE MADE FOR IS EXECUTED OR NOT. THEY SHALL NOT BE USED BY THE OWNER OR OTHERS ON OTHER PROJECTS OR FOR ADDITIONS TO THIS PROJECT BY OTHERS, EXCEPT BY AGREEMENT IN WRITING AND WITH APPROPRIATE COMPENSATION TO THE ARCHITECT.

SIGNAGE AND DUMPSTER ENCLOSURE DETAILS

Construction Documents

A-5.60



4 MEDALLION
1" = 1'-0"



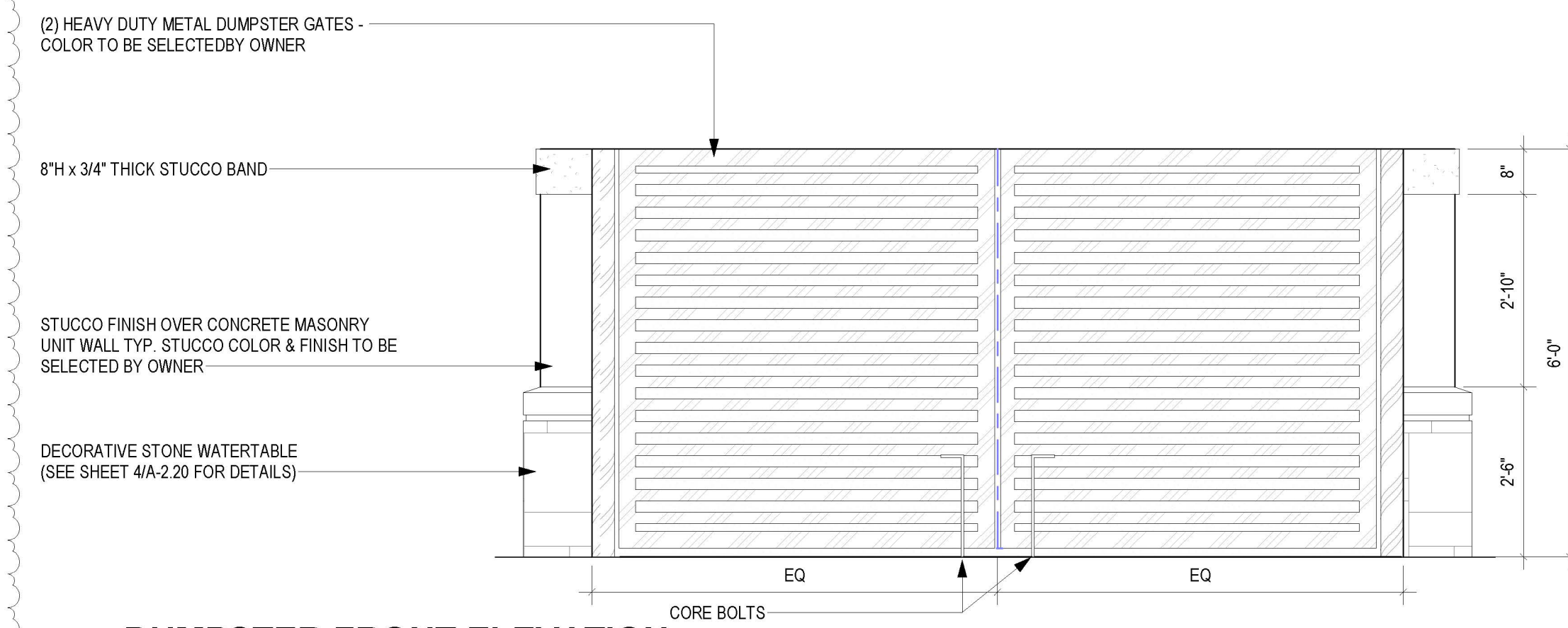
3 SIGNAGE DETAIL
1/2" = 1'-0"



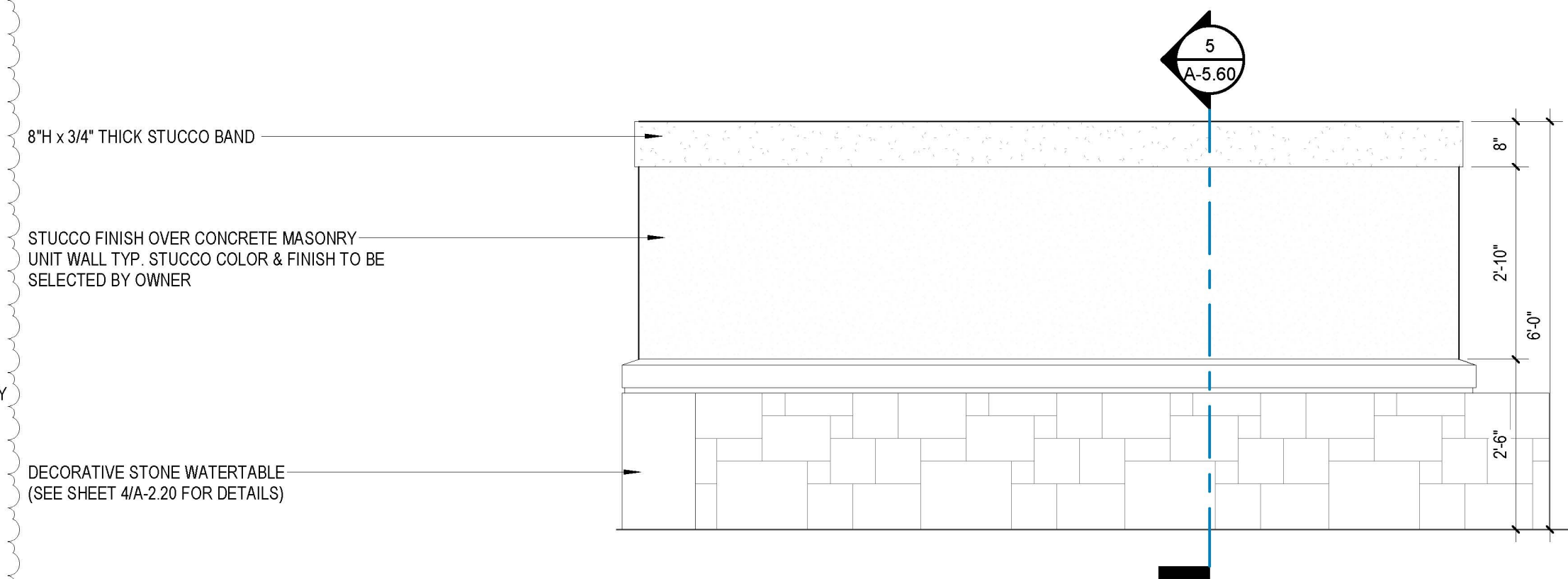
2 SIGNAGE DETAIL
1/2" = 1'-0"



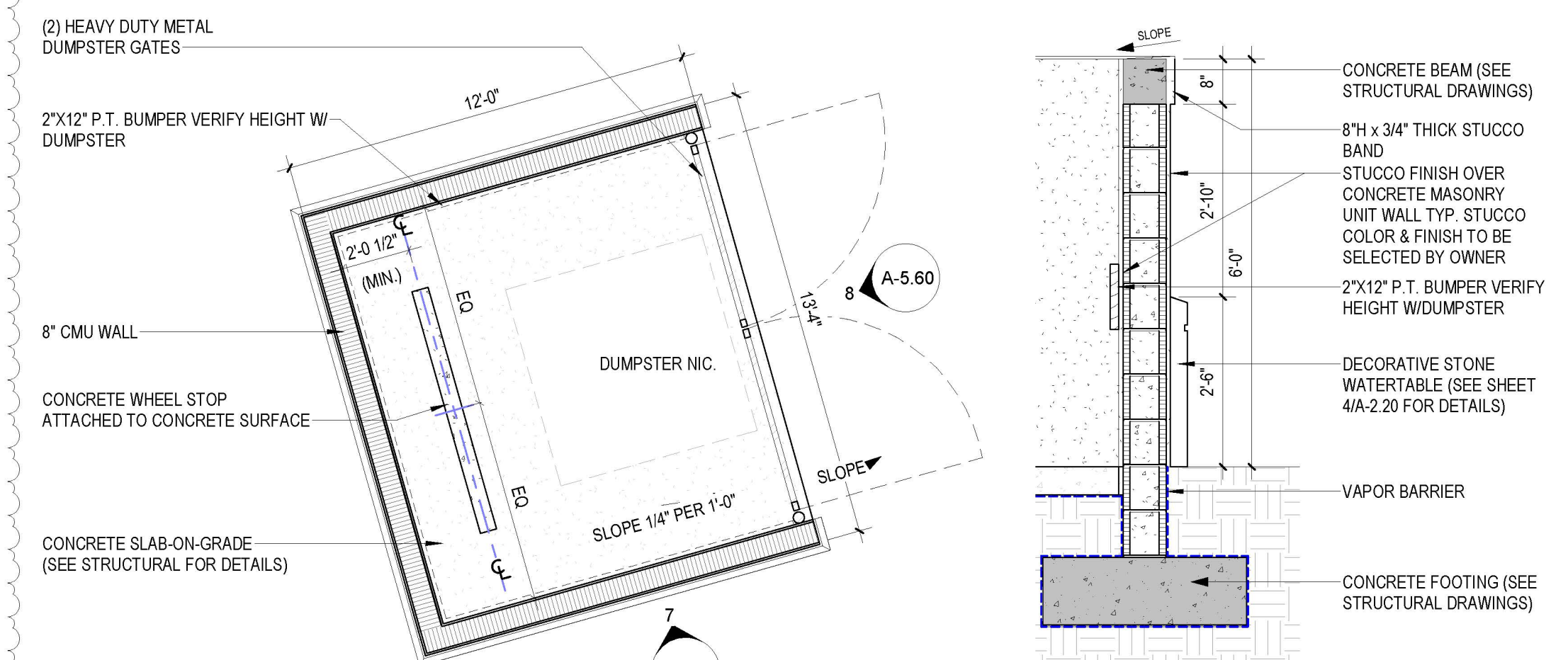
1 SIGNAGE DETAIL
1/2" = 1'-0"



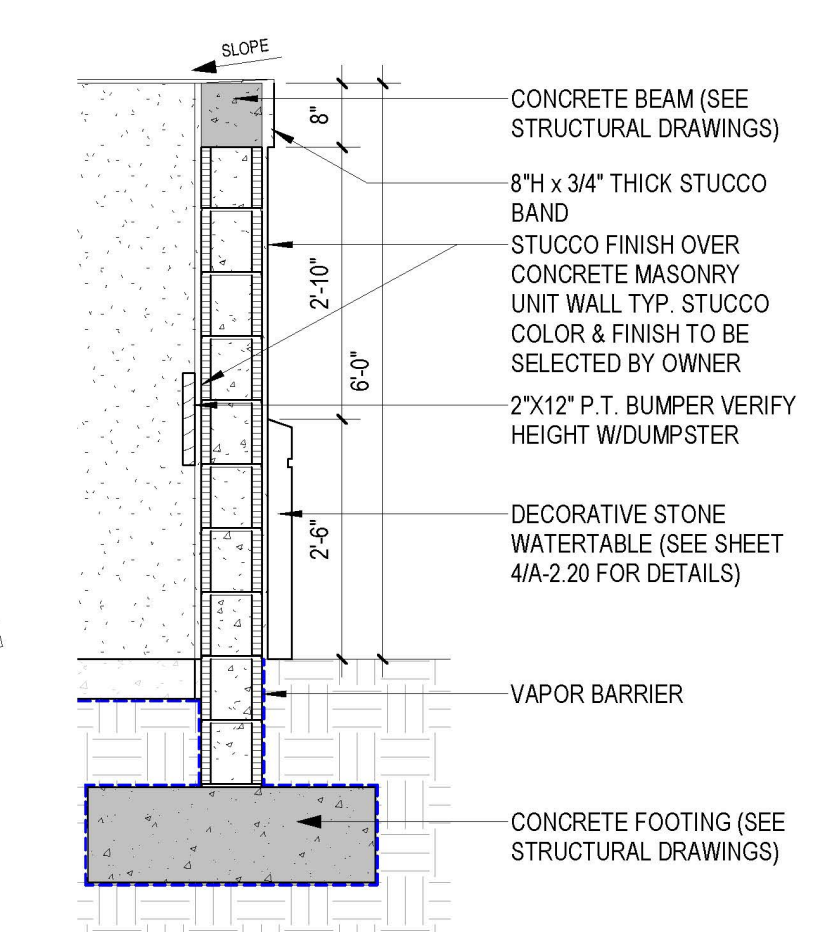
8 DUMPSTER FRONT ELEVATION
1/2" = 1'-0"



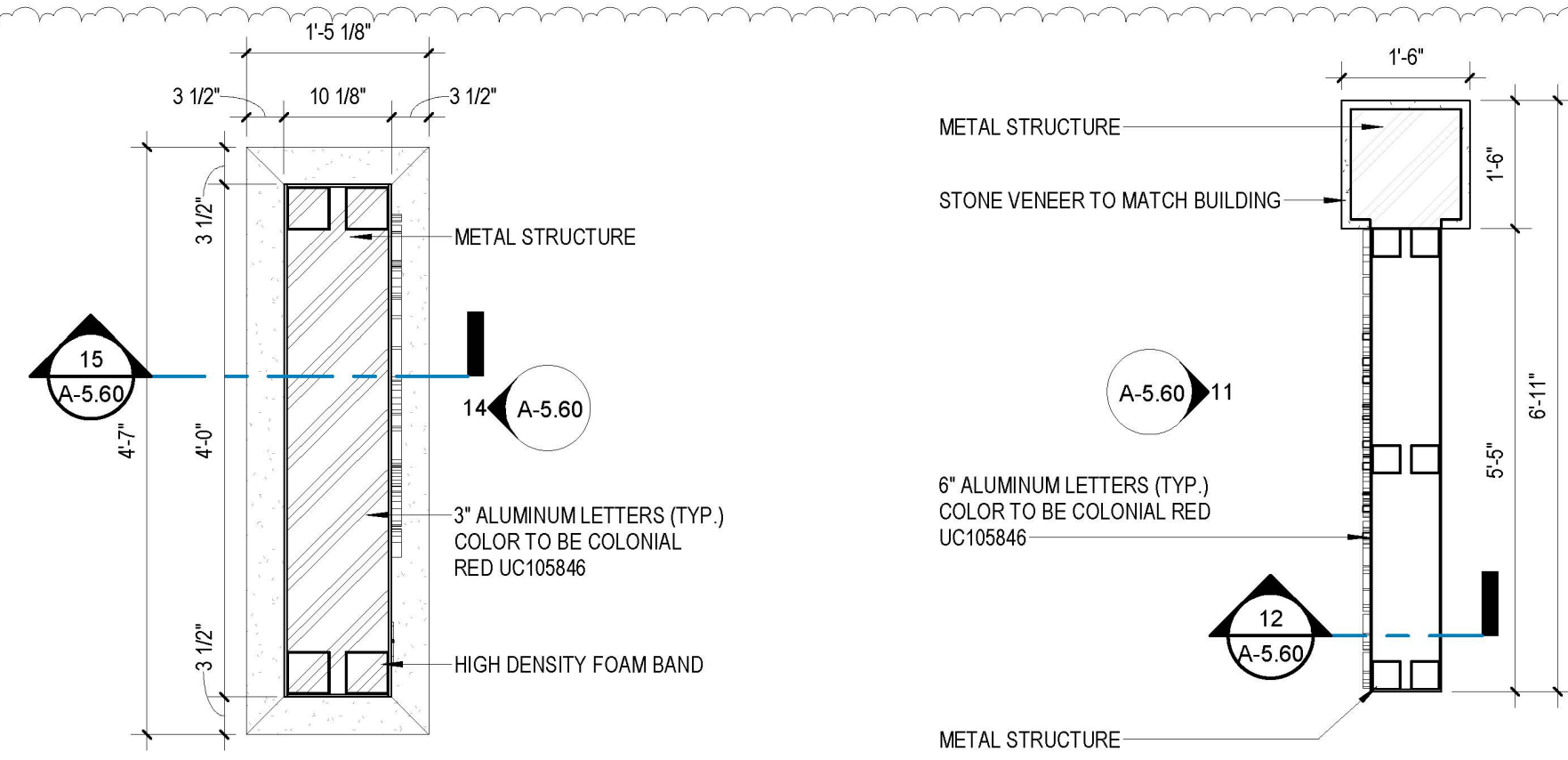
7 DUMPSTER SIDE & REAR ELEVATION
1/2" = 1'-0"



6 ENLARGED DUMPSTER PLAN
1/4" = 1'-0"

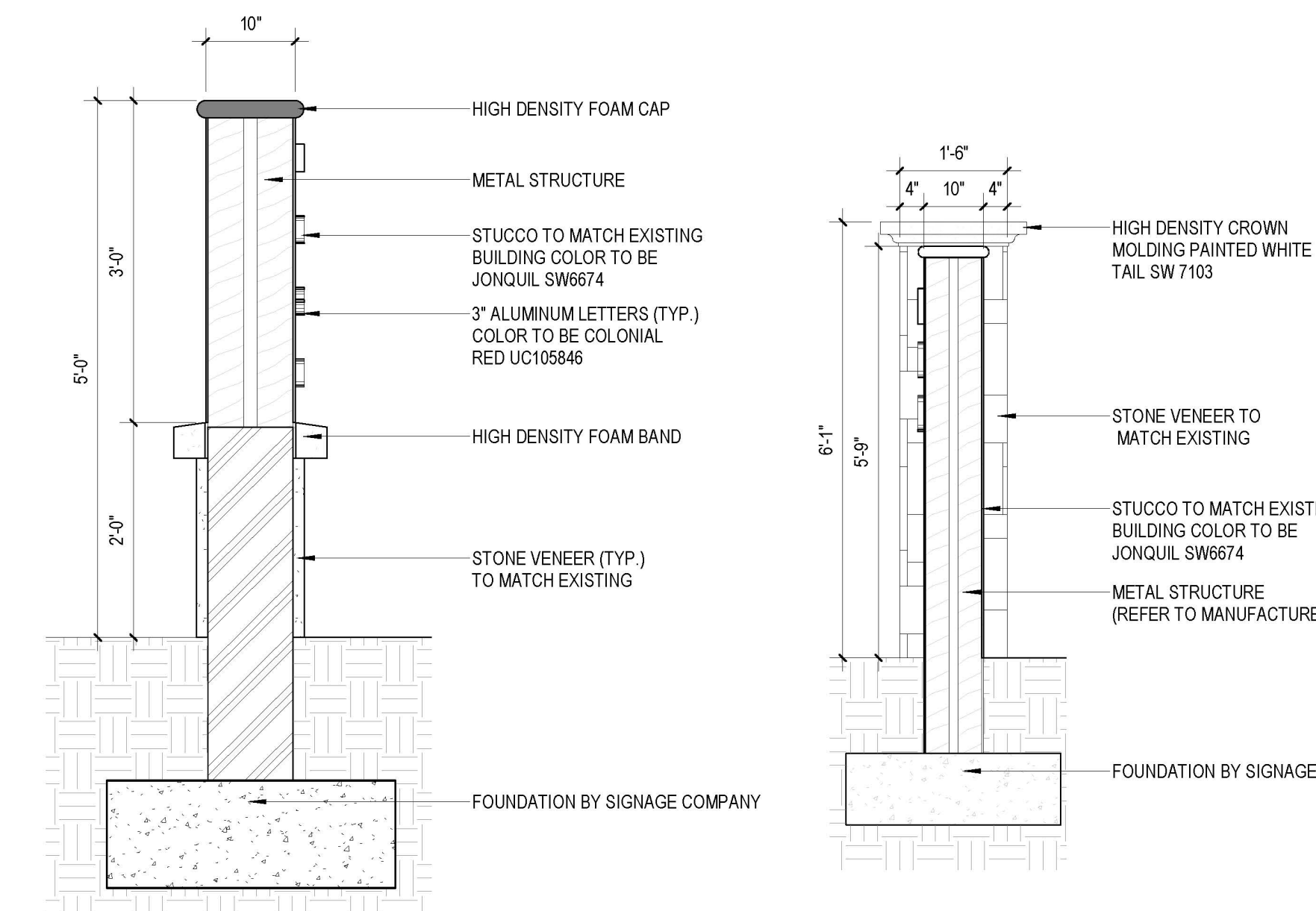


5 DUMPSTER SECTION
1/2" = 1'-0"



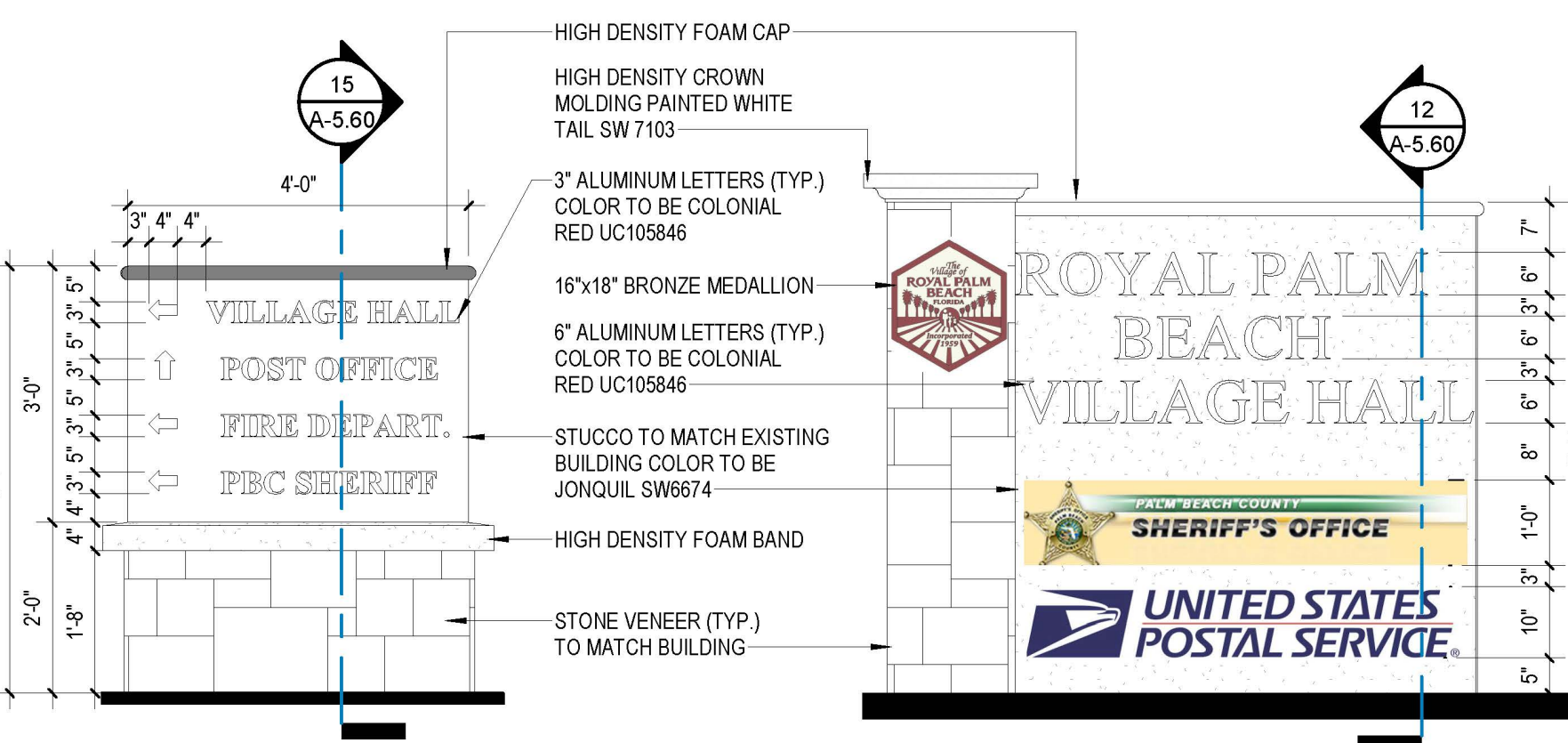
16 WAYFINDING SIGN FLOOR PLAN
3/4" = 1'-0"

13 MONUMENT SIGN FLOOR PLAN
1/2" = 1'-0"



15 WAYFINDING SIGN SECTION
3/4" = 1'-0"

12 MONUMENT SIGN SECTION
1/2" = 1'-0"

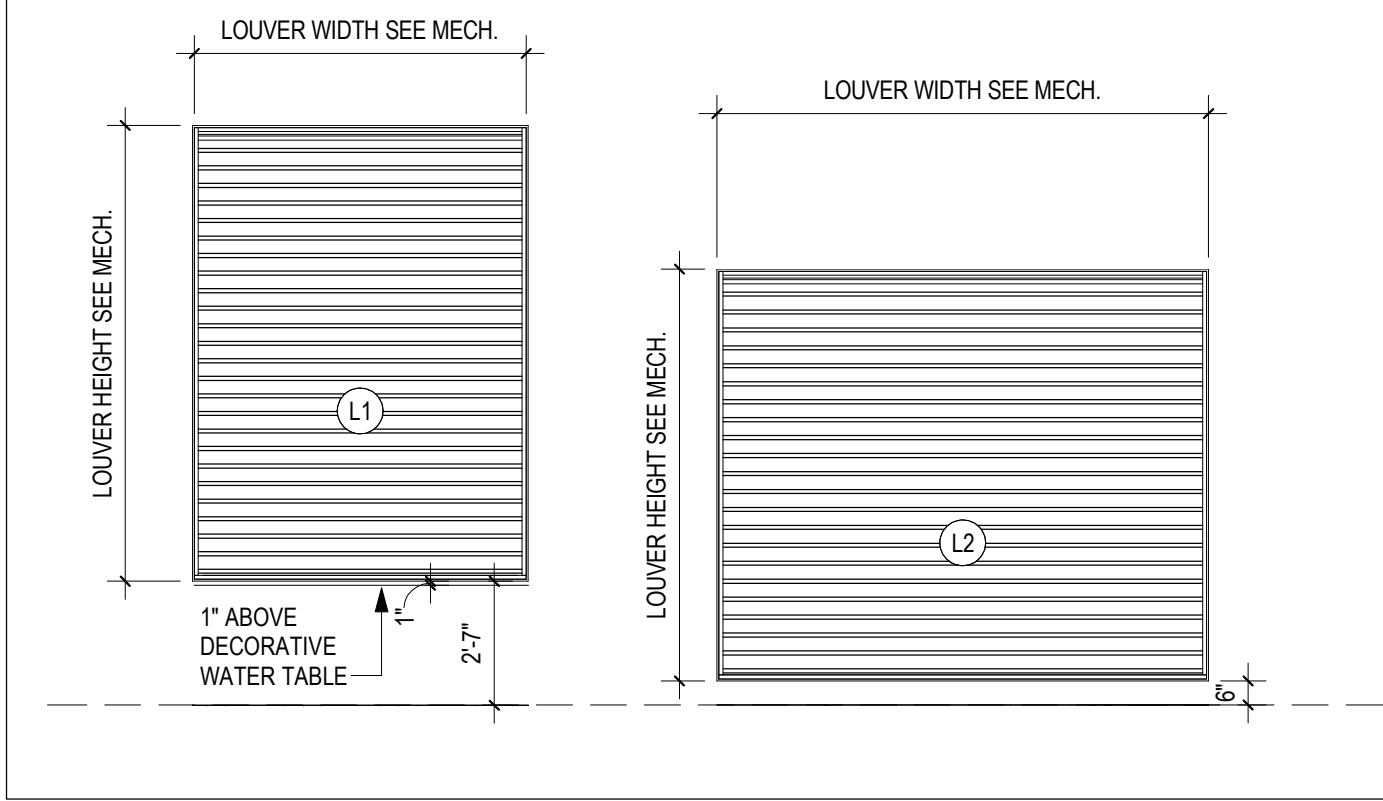


14 WAYFINDING SIGN ELEVATION
1/2" = 1'-0"

11 MONUMENT SIGN ELEVATION
1/2" = 1'-0"

LOUVER TYPES

NOTE: SEE MECHANICAL DRAWINGS FOR LOUVER WIDTH & HEIGHT, TYP.

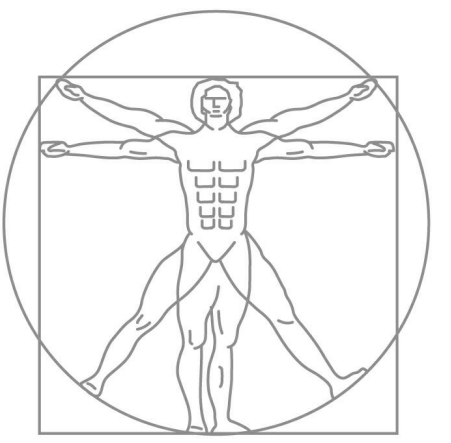


DOOR & WINDOW GENERAL NOTES:

1. PROVIDE IMPACT RESISTANT, EXTERIOR DOOR AND WINDOW ASSEMBLIES AT ALL OPENINGS THAT COMPLY WITH STATE OF FLORIDA OR MIAMI-DADE COUNTY PRODUCT APPROVAL (AS REQUIRED BY LOCAL BLDG. DEPT.) MANUFACTURER SHALL PROVIDE CURRENT VALID MIAMI DADE COUNTY NOA OR STATE OF FLORIDA PRODUCT APPROVAL FOR ENTIRE SYSTEM ASSEMBLY MEETING OR EXCEEDING DESIGN WIND LOAD REQUIREMENTS.
2. PROVIDE ANSIBHMA STANDARDS, GRADE 1 (COMMERCIAL) HARDWARE ON ALL EXTERIOR DOORS AND INTERIOR DOORS. ALL HARDWARE TO BE ADA COMPLIANT (INCLUDING THRESHOLDS AND CLOSERS). ALL LOCK HARDWARE TO BE COORDINATED WITH THE OWNER TO MEET KEYING SYSTEM REQUIREMENTS.
3. PROVIDE SHOP DRAWINGS FOR OWNER & ARCHITECT APPROVAL PRIOR TO PURCHASE ORDER AND FABRICATION. WINDOWS, DOORS, HARDWARE & CONNECTIONS. PRODUCT APPROVALS SHALL BE INCLUDED IN SHOP DRAWING SUBMITTAL.
4. PROVIDE PRESSURE TREATED WOOD BUCCS WHEN AS REQUIRED IN CONTACT WITH CONCRETE OR CMU. (SEE STRUCTURAL DRAWINGS)
5. PROVIDE PROSOCO R-GUARD FAST FLASH FLUID APPLIED FLASHING AT ALL EXTERIOR OPENINGS.
6. PROVIDE WINDOW TREATMENTS AT THE EXTERIOR OFFICES, BREAKROOM, AND WORK AREAS WINDOWS. BASIS OF DESIGN: MECO SYSTEMS, ECOVEL SCREENS BASKET WEAVE 1550 SERIES (3% OPEN), COLOR 1566 EGG SHELL. EQUIVALENT SUBSTITUTIONS MAY BE SUBMITTED FOR REVIEW / APPROVAL BY OWNER AND ARCHITECT.
7. PROVIDE WINDOW TREATMENTS AT ALL EXTERIOR OPENINGS IN OFFICES, BREAKROOMS, WORK AREAS, AND COUNCIL CHAMBERS.

DOOR SCHEDULE

| Door # | Door Type | Door Material | Width | Height | Frame Type | Frame Material | Head Detail | Jamb Detail | Threshold Detail | Hardware Group | Comments | Quantity |
|--------|-----------|---------------|--------|--------|------------|----------------|-------------|-------------|------------------|----------------|----------|----------|
| 100 | D | WD | 3'-0" | 8'-0" | 1 | HM | 16/A-6.20 | 15/A-6.20 | 14/A-6.20 | 5 | | 1 |
| 100.1 | D | WD | 3'-0" | 8'-0" | 1 | HM | 16/A-6.20 | 15/A-6.20 | 14/A-6.20 | 5 | | 1 |
| 101 | D | WD | 3'-0" | 8'-0" | 1 | HM | 16/A-6.20 | 15/A-6.20 | 14/A-6.20 | 5 | | 1 |
| 102 | D | WD | 3'-0" | 8'-0" | 1 | HM | 16/A-6.20 | 15/A-6.20 | 14/A-6.20 | 5 | | 1 |
| 104 | A | HM | 3'-0" | 8'-0" | 1 | HM | 10/A-6.20 | 9/A-6.20 | 8/A-6.20 | 4 | 60 Min. | 1 |
| 104.1 | A | HM | 3'-0" | 8'-0" | 1 | HM | 10/A-6.20 | 9/A-6.20 | 8/A-6.20 | 4 | 60 Min. | 1 |
| 104.2 | A | HM | 3'-0" | 8'-0" | 1 | HM | 10/A-6.20 | 9/A-6.20 | 8/A-6.20 | 4.1 | 60 Min. | 1 |
| 106 | E | WD | 6'-0" | 8'-0" | 1 | HM | 19/A-6.20 | 18/A-6.20 | 17/A-6.20 | 9 | 45 Min. | 1 |
| 106.1 | C | WD | 3'-0" | 8'-0" | 1 | HM | 19/A-6.20 | 18/A-6.20 | 17/A-6.20 | 10 | | 1 |
| 107 | D | WD | 3'-0" | 8'-0" | 1 | HM | 16/A-6.20 | 15/A-6.20 | 14/A-6.20 | 5 | | 1 |
| 107.1 | D | WD | 3'-0" | 8'-0" | 1 | HM | 16/A-6.20 | 15/A-6.20 | 14/A-6.20 | 5 | | 1 |
| 108 | D | WD | 3'-0" | 8'-0" | 1 | HM | 16/A-6.20 | 15/A-6.20 | 14/A-6.20 | 5 | | 1 |
| 109 | C | WD | 3'-0" | 8'-0" | 1 | HM | 19/A-6.20 | 18/A-6.20 | 17/A-6.20 | 6 | | 1 |
| 110 | A | HM | 3'-0" | 8'-0" | 1 | HM | 7/A-6.20 | 6/A-6.20 | 5/A-6.20 | 3 | | 1 |
| 110.1 | A | HM | 3'-0" | 8'-0" | 1 | HM | 10/A-6.20 | 9/A-6.20 | 8/A-6.20 | 4 | 60 Min. | 1 |
| 110.2 | A | HM | 3'-0" | 8'-0" | 1 | HM | 10/A-6.20 | 9/A-6.20 | 8/A-6.20 | 4.1 | 60 Min. | 1 |
| 111 | C | WD | 3'-0" | 8'-0" | 1 | HM | 19/A-6.20 | 18/A-6.20 | 17/A-6.20 | 7 | | 1 |
| 111.1 | F | WD | 2'-0" | 6'-3" | - | WD | | | | 8 | | 1 |
| 111.2 | F | WD | 2'-0" | 6'-3" | - | WD | | | | 8 | | 1 |
| 111.3 | F | WD | 3'-0" | 6'-3" | - | WD | | | | 8 | | 1 |
| 112 | B | HM | 6'-0" | 8'-0" | 1 | HM | 7/A-6.20 | 6/A-6.20 | 5/A-6.20 | 2 | | 1 |
| 113 | C | WD | 3'-0" | 8'-0" | 1 | HM | 19/A-6.20 | 18/A-6.20 | 17/A-6.20 | 7 | | 1 |
| 113.1 | F | WD | 3'-0" | 6'-3" | - | WD | | | | 8 | | 1 |
| 114 | C | WD | 3'-0" | 8'-0" | 1 | HM | 19/A-6.20 | 18/A-6.20 | 17/A-6.20 | 10 | | 1 |
| 115 | C | WD | 3'-0" | 8'-0" | 1 | HM | 19/A-6.20 | 18/A-6.20 | 17/A-6.20 | 5 | | 1 |
| 116 | C | WD | 3'-0" | 8'-0" | 1 | HM | 19/A-6.20 | 18/A-6.20 | 17/A-6.20 | 10 | 45 Min. | 1 |
| 118 | C | WD | 3'-0" | 8'-0" | 1 | HM | 19/A-6.20 | 18/A-6.20 | 17/A-6.20 | 10 | 45 Min. | 1 |
| 118.1 | C | WD | 3'-0" | 8'-0" | 1 | HM | 19/A-6.20 | 18/A-6.20 | 17/A-6.20 | 10 | | 1 |
| 118.2 | H | AL | 3'-0" | 8'-0" | 1 | AL | 4/A-6.20 | 2/A-6.20 | 2/A-6.20 | 1 | | 1 |
| 119 | C | WD | 3'-0" | 8'-0" | 1 | HM | 19/A-6.20 | 18/A-6.20 | 17/A-6.20 | 8 | 45 Min. | 1 |
| 120 | C | WD | 3'-0" | 8'-0" | 1 | HM | 19/A-6.20 | 18/A-6.20 | 17/A-6.20 | 6.1 | 45 Min. | 1 |
| 121 | C | WD | 3'-0" | 8'-0" | 1 | HM | 19/A-6.20 | 18/A-6.20 | 17/A-6.20 | 6 | 45 Min. | 1 |
| 122 | C | WD | 3'-0" | 8'-0" | 1 | HM | 19/A-6.20 | 18/A-6.20 | 17/A-6.20 | 8 | 45 Min. | 1 |
| 123 | D | WD | 3'-0" | 8'-0" | 1 | HM | 16/A-6.20 | 15/A-6.20 | 14/A-6.20 | 5 | | 1 |
| 124 | M | WD | 3'-0" | 8'-0" | 1 | HM | 16/A-6.20 | 15/A-6.20 | 14/A-6.20 | 13 | | 1 |
| 124.1 | A | HM | 3'-0" | 8'-0" | 1 | HM | 7/A-6.20 | 6/A-6.20 | 5/A-6.20 | 14 | | 1 |
| 126 | E | WD | 6'-0" | 8'-0" | 1 | HM | 19/A-6.20 | 18/A-6.20 | 17/A-6.20 | 9 | 45 Min. | 1 |
| 126.1 | I | AL | 6'-0" | 8'-0" | 1 | AL | 4/A-6.20 | 2/A-6.20 | 1/A-6.20 | 1 | | 1 |
| 127 | L | AL | 6'-0" | 8'-0" | 1 | AL | 4/A-6.20 | 2/A-6.20 | 1/A-6.20 | 1 | | 1 |
| 127.1 | J | AL | 6'-0" | 8'-0" | 1 | AL | 4/A-6.20 | 2/A-6.20 | 1/A-6.20 | 1 | | 1 |
| 128.1 | C | WD | 3'-0" | 8'-0" | 1 | HM | 19/A-6.20 | 18/A-6.20 | 17/A-6.20 | 9 | | 1 |
| 128.2 | K | AL | 28'-0" | 9'-0" | - | AL | | | | 12 | | 1 |
| 128.3 | G | AL | 16'-0" | 9'-0" | - | AL | | | | 12 | | 1 |
| 129 | M | WD | 3'-0" | 8'-0" | 1 | HM | 16/A-6.20 | 15/A-6.20 | 14/A-6.20 | 5 | | 1 |
| 130 | E | WD | 6'-0" | 8'-0" | 1 | HM | 19/A-6.20 | 18/A-6.20 | 17/A-6.20 | 10 | 45 Min. | 1 |
| 131 | D | WD | 3'-0" | 8'-0" | 1 | HM | 16/A-6.20 | 15/A-6.20 | 14/A-6.20 | 5 | | 1 |
| 132 | D | WD | 3'-0" | 8'-0" | 1 | HM | 16/A-6.20 | 15/A-6.20 | 14/A-6.20 | 5 | | 1 |
| 133 | D | WD | 3'-0" | 8'-0" | 1 | HM | 16/A-6.20 | 15/A-6.20 | 14/A-6.20 | 5 | | 1 |
| 134 | C | WD | 3'-0" | 8'-0" | 1 | HM | 19/A-6.20 | 18/A-6.20 | 17/A-6.20 | 10 | | 1 |
| 136 | C | WD | 3'-0" | 8'-0" | 1 | HM | 19/A-6.20 | 18/A-6.20 | 17/A-6.20 | 10 | 45 Min. | 1 |
| 136.1 | C | WD | 3'-0" | 8'-0" | 1 | HM | 19/A-6.20 | 18/A-6.20 | 17/A-6.20 | 5 | | 1 |
| 137 | E | WD | 6'-0" | 8'-0" | 1 | HM | 19/A-6.20 | 18/A-6.20 | 17/A-6.20 | 9 | 45 Min. | 1 |
| 137.1 | N | WD | 3'-0" | 8'-0" | 1 | HM | 16/A-6.20 | 15/A-6.20 | 14/A-6.20 | 9 | 45 Min. | 1 |
| 137.2 | N | WD | 3'-0" | 8'-0" | 1 | HM | 16/A-6.20 | 15/A-6.20 | 14/A-6.20 | 10 | | 1 |
| 139 | D | WD | 3'-0" | 8'-0" | 1 | HM | 16/A-6.20 | 15/A-6.20 | 14/A-6.20 | 5 | | 1 |
| 140 | D | WD | 3'-0" | 8'-0" | 1 | HM | 16/A-6.20 | 15/A-6.20 | 14/A-6.20 | 5 | | 1 |
| 141 | D | WD | 3'-0" | 8'-0" | 1 | HM | 16/A-6.20 | 15/A-6.20 | 14/A-6.20 | 5 | | 1 |
| 142 | D | WD | 3'-0" | 8'-0" | 1 | HM | 16/A-6.20 | 15/A-6.20 | 14/A-6.20 | 5 | | 1 |
| 145 | C | WD | 3'-0" | 8'-0" | 1 | HM | 19/A-6.20 | 18/A-6.20 | 17/A-6.20 | 5 | | 1 |
| 146 | D | WD | 3'-0" | 8'-0" | 1 | HM | 16/A-6.20 | 15/A-6.20 | 14/A-6.20 | 5 | | 1 |
| 147 | D | WD | 3'-0" | 8'-0" | 1 | HM | 16/A-6.20 | 15/A-6.20 | 14/A-6.20 | 5 | | 1 |
| 148 | C | WD | 3'-0" | 8'-0" | 1 | HM | 19/A-6.20 | 18/A-6.20 | 17/A-6.20 | 6 | | 1 |
| 149 | C | WD | 3'-0" | 8'-0" | 1 | HM | 19/A-6.20 | 18/A-6.20 | 17/A-6.20 | 8 | | 1 |
| 150 | A | HM | 3'-0" | 8'-0" | 1 | HM | 7/A-6.20 | 6/A-6.20 | 5/A-6.20 | 3 | | 1 |
| 150.1 | A | HM | 3'-0" | 8'-0" | 1 | HM | 10/A-6.20 | 9/A-6.20 | 8/A-6.20 | 4 | 60 Min. | 1 |
| 150.2 | A | HM | 3'-0" | 8'-0" | 1 | HM | 10/A-6.20 | 9/A-6.20 | 8/A-6.20 | 4 | 60 Min. | 1 |
| 151 | B | HM | 3'-0" | 8'-0" | 1 | HM | 7/A-6.20 | 6/A-6.20 | 5/A-6.20 | 2 | | 1 |
| 151.1 | A | HM | 3'-0" | 8'-0" | 1 | HM | 10/A-6.20 | 9/A-6.20 | 8/A-6.20 | 11 | 60 Min. | 1 |
| 153 | A | HM | 3'-0" | 8'-0" | 1 | HM | 7/A-6.20 | 6/A-6.20 | 5/A-6.20 | 2 | | 1 |
| 153.1 | A | HM | 3'-0" | 8'-0" | 1 | HM | 10/A-6.20 | 9/A-6.20 | 8/A-6.20 | 6.1 | 90 Min. | 1 |
| 200 | D | WD | 3'-0" | 8'-0" | 1 | HM | 16/A-6.20 | 15/A-6.20 | 14/A-6.20 | 5 | | 1 |
| 201 | D | WD | 3'-0" | 8'-0" | 1 | HM | 16/A-6.20 | 15/A-6.20 | 14/A-6.20 | 5 | | 1 |
| 202 | D | WD | 3'-0" | 8'-0" | 1 | HM | 16/A-6.20 | 15/A-6.20 | 14/A-6.20 | 5 | | 1 |
| 203 | D | WD | 3'-0" | 8'-0" | 1 | HM | 16/A-6.20 | 15/A-6.20 | 14/A-6.20 | 5 | | 1 |
| 204 | C | WD | 3'-0" | 8'-0" | 1 | HM | 19/A-6.20 | 18/A-6.20 | 17/A-6.20 | 6 | | 1 |
| 205 | C | WD | 3'-0" | 8'-0" | 1 | HM | 19/A-6.20 | 18/A-6.20 | 17/A-6.20 | 10 | | 1 |
| 205.1 | C | WD | 3'-0" | 8'-0" | 1 | HM | 19/A-6.20 | 18/A-6.20 | 17/A-6.20 | 10 | 45 Min. | 1 |
| 206 | D | WD | 3'-0" | 8'-0" | 1 | HM | 16/A-6.20 | 15/A-6.20 | 14/A-6.20 | 5 | | 1 |
| 206.1 | C | WD | 3'-0" | 8'-0" | 1 | HM | 19/A-6.20 | 18/A-6.20 | 17/A-6.20 | 11 | | 1 |
| 206.2 | C | WD | 3'-0" | 8'-0" | 1 | HM | 19/A-6.20 | 18/A-6.20 | 17/A-6.20 | 6.1 | 90 Min. | 1 |
| 210 | D | WD | 3'-0" | 8'-0" | 1 | HM | 16/A-6.20 | 15/A-6.20 | 14/A-6.20 | 5 | | 1 |
| 211 | C | WD | 3'-0" | 8'-0" | 1 | HM | 19/A-6.20 | 18/A-6.20 | 17/A-6.20 | 5 | | 1 |
| 212 | D-1 | WD | 3'-0" | 8'-0" | 1 | HM | 16/A-6.20 | 15/A-6.20 | 14/A-6.20 | 5 | | 1 |
| 213 | C | WD | 3'-0" | 8'-0" | 1 | HM | 19/A-6.20 | 18/A-6.20 | 17/A-6.20 | 10 | | 1 |
| 213.2 | C | WD | 3'-0" | 8'-0" | 1 | HM | 19/A-6.20 | 18/A-6.20 | 17/A-6.20 | 10 | 45 Min. | 1 |
| 214 | C | WD | 3'-0" | 8'-0" | 1 | HM | 19/A-6.20 | 18/A-6.20 | 17/A-6.20 | 10 | 45 Min. | 1 |
| 215 | C | WD | 3'-0" | 8'-0" | 1 | HM | 19/A-6.20 | 18/A-6.20 | 17/A-6.20 | 7 | 45 Min. | 1 |
| 215.1 | F | WD | 2'-0" | 6'-3" | - | WD | | | | 8 | | 1 |
| 215.2 | F | WD | 2'-0" | 6'-3" | - | WD | | | | 8 | | 1 |
| 216 | C | WD | 3'-0" | 8'-0" | 1 | HM | 19/A-6.20 | 18/A-6.20 | 17/A-6.20 | 6.1 | 45 Min. | 1 |
| 217 | C | WD | 3'-0" | 8'-0" | 1 | HM | 19/A-6.20 | 18/A-6.20 | 17/A-6.20 | 6.1 | 45 Min. | 1 |
| 218 | D | WD | 3'-0" | 8'-0" | 1 | HM | 16/A-6.20 | 15/A-6.20 | 14/A-6.20 | 7 | 45 Min. | 1 |
| 218.1 | F | WD | 2'-6" | 6'-3" | - | WD | | | | 8 | | 1 |
| 218.2 | F | WD | 2'-6" | 6'-3" | - | WD | | | | 8 | | 1 |
| 218.3 | F | WD | 3'-0" | 6'-3" | - | WD | | | | 8 | | 1 |
| 219 | C | WD | 3'-0" | 8'-0" | 1 | HM | 19/A-6.20 | 18/A-6.20 | 17/A-6.20 | 10 | 45 Min. | 1 |
| 220 | L | AL | 3'-0" | 8'-0" | 1 | AL | 13/A-6.20 | 12/A-6.20 | 11/A-6.20 | 5 | | 1 |
| 222 | D | WD | 3'-0" | 8'-0" | 1 | HM | 16/A-6.20 | 15/A-6.20 | 14/A-6.20 | 5 | | 1 |
| 223 | D | WD | 3'-0" | 8'-0" | 1 | HM | 16/A-6.20 | 15/A-6.20 | 14/A-6.20 | 5 | | 1 |
| 224 | D | WD | 3'-0" | 8'-0" | 1 | HM | 16/A-6.20 | 15/A-6.20 | 14/A-6.20 | 5 | | 1 |
| 225 | C | WD | 3'-0" | 8'-0" | 1 | HM | 19/A-6.20 | 18/A-6.20 | 17/A-6.20 | 5 | | 1 |
| 226 | D | WD | 3'-0" | 8'-0" | 1 | HM | 16/A-6.20 | 15/A-6.20 | 14/A-6.20 | 5 | | 1 |
| 226.1 | D | WD | 3'-0" | 8'-0" | 1 | HM | 16/A-6.20 | 15/A-6.20 | 14/A-6.20 | 5 | | 1 |
| 227 | D | WD | 3'-0" | 8'-0" | 1 | HM | 16/A-6.20 | 15/A-6.20 | 14/A-6.20 | 5 | | 1 |
| 228 | D | WD | 3'-0" | 8'-0" | 1 | HM | 16/A-6.20 | 15/A-6.20 | 14/A-6.20 | 5 | | 1 |
| 229 | D | WD | 3'-0" | 8'-0" | 1 | HM | 16/A-6.20 | 15/A-6.20 | 14/A-6.20 | 5 | | 1 |
| 230 | D | WD | 3'-0" | 8'-0" | 1 | HM | 16/A-6.20 | 15/A-6.20 | 14/A-6.20 | 5 | | 1 |
| 233 | C | WD | 3'-0" | 8'-0" | 1 | HM | 19/A-6.20 | 18/A-6.20 | 17/A-6.20 | 6 | | 1 |
| 234 | C | WD | 3 | | | | | | | | | |



Est. 1988
Rick Gonzalez, AIA
President
FL License AR0014172
120 West Olive Ave. Ste. 210,
West Palm Beach, FL 33401
P (561) 659-2383
www.regarchitects.com



Village Hall of
Royal Palm Beach

1050 Royal Palm Beach Blvd.,
Royal Palm Beach, FL 33411

| NO. | DATE | DESCRIPTION |
|-----|---------|-------------|
| 1 | 6/16/21 | ADDENDA #1 |

| | |
|----------|-------------|
| DATE | 05-28-2021 |
| DESIGNER | REG |
| DRAWN | TW/RL/BC/RF |
| CHECKED | MHA/REG |
| REG # | 19024 |

© REG 2020

OWNERSHIP AND USE OF THESE DOCUMENTS & SPECIFICATIONS AS INSTRUMENTS OF SERVICE ARE AND SHALL REMAIN THE PROPERTY OF THE ARCHITECT WHETHER THE PROJECT THEY ARE MADE FOR IS EXECUTED OR NOT. THEY SHALL NOT BE USED BY THE OWNER OR OTHERS ON OTHER PROJECTS OR FOR ADDITIONS TO THIS PROJECT BY OTHERS, EXCEPT BY AGREEMENT IN WRITING AND WITH APPROPRIATE COMPENSATION TO THE ARCHITECT.

WINDOW &
DOOR
DETAILS/HARDWARE

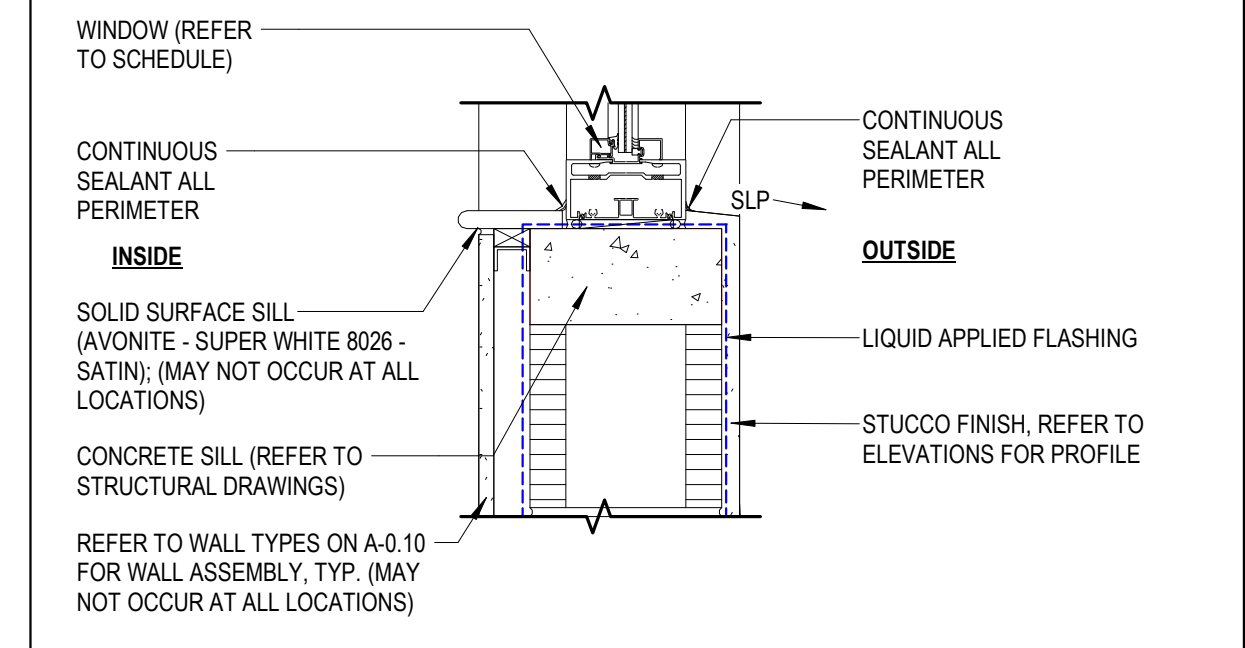
Construction Documents

A-6.10

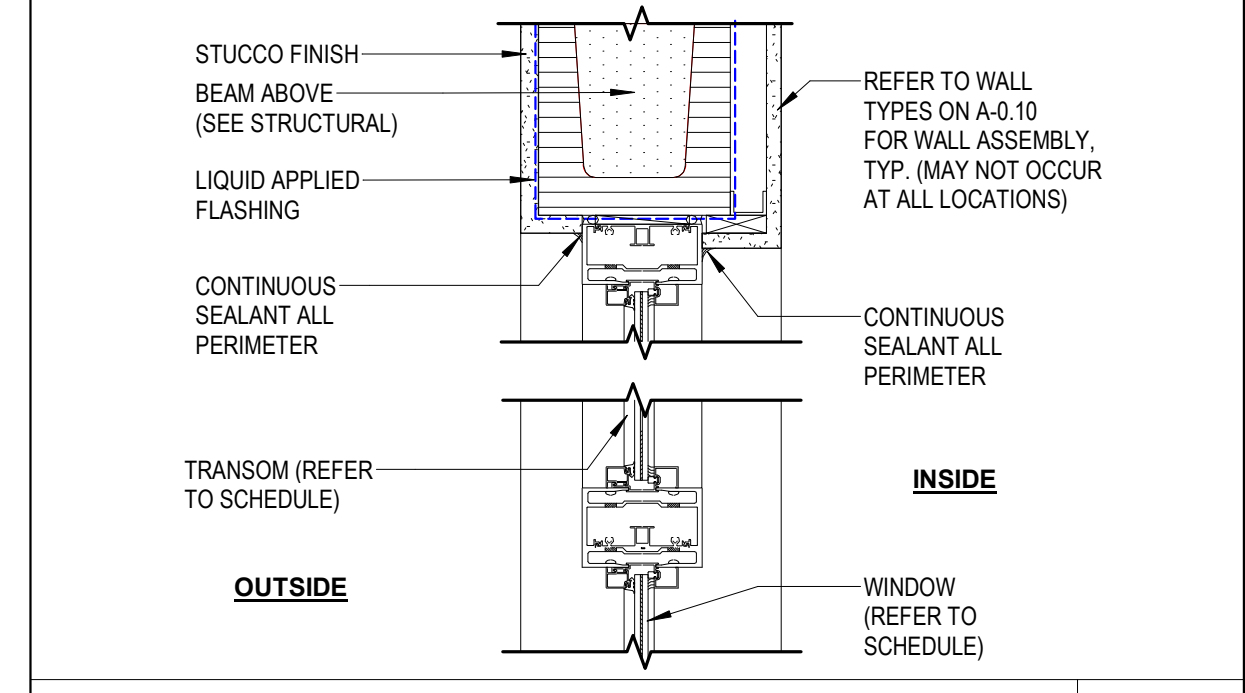
DOOR HARDWARE GROUPS

| | |
|--|--|
| <p>HARDWARE GROUP #1 (Exterior, Aluminum Storefront, Entrance, Access Control):</p> <ul style="list-style-type: none"> HN-1 Hinges PT-1 Power Transfer Hinge (Electrified) RD-1 Rim Exit Device KC-1 Key Cylinder FP-1 Pull Bars CL-1 Closer TH-1 Threshold(ADA) DG-1 Door Gasketing CR-1 Card Reader <p>HARDWARE GROUP #2 (Exterior, Hollow Metal, Utility):</p> <ul style="list-style-type: none"> HN-2 Hinges RD-2 Rim Exit Device LK-1 Lockset: Storeroom CL-1 Closer TH-2 Threshold(ADA) SB-1 Surface Bolts (Top & Bottom of Inactive Leaf) DG-1 Door Gasketing <p>HARDWARE GROUP #3 (Exterior, Hollow Metal, Stairs, Access Control):</p> <ul style="list-style-type: none"> HN-2 Hinges RD-2 Rim Exit Device LK-2 Lockset: Office/Entry ES-1 Electric Strike CL-1 Closer TH-3 Threshold(ADA) WS-1 Wall Stop FS-1 Floor Stop (Only Doors 104 & 104.1) CR-1 Card Reader <p>HARDWARE GROUP #4 (Interior, Hollow Metal, Stairs, Access Controlled):</p> <ul style="list-style-type: none"> HN-2 Hinges RD-2 Rim Exit Device LK-2 Lockset: Office/Entry ES-1 Electric Strike CL-1 Closer TH-3 Threshold(ADA) WS-1 Wall Stop FS-1 Floor Stop (Only Doors 104 & 104.1) CR-1 Card Reader <p>HARDWARE GROUP #5 (Interior, Wood, Office/Conf.):</p> <ul style="list-style-type: none"> HN-2 Hinges LK-2 Lockset: Office/Entry WS-1 Wall Stop FS-1 Floor Stop (Door 139,220,1,226,226.1) <p>HARDWARE GROUP #6.1 (Interior, Hollow Metal, Storage):</p> <ul style="list-style-type: none"> HN-2 Hinges LK-1 Lockset: Storeroom WS-1 Wall Stop OS-1 Overhead Stop (Only Doors 216 & 217) CL-1 Closer <p>HARDWARE GROUP #7 (Interior, Wood, Restrooms):</p> <ul style="list-style-type: none"> HN-2 Hinges KC-1 Key Cylinder FP-1 Push-Pull Set WS-1 Wall Stop CL-1 Closer <p>HARDWARE GROUP #8 (Interior, Wood, Restrooms):</p> <ul style="list-style-type: none"> HN-2 Hinges LK-4 Lockset: Privacy WS-1 Wall Stop OS-1 Overhead Stop (Door 121, 122 Only) CL-1 Closer (Door 119, 121, 122, 148 Only) DB-1 Occupancy Indicator Dead Bolt (Door 119, 121, 122, 148 Only) <p>HARDWARE GROUP #9 (Interior, Wood, Entry/Egress):</p> <ul style="list-style-type: none"> HN-2 Hinges RD-2 Rim Exit Device LK-2 Lockset: Office/Entry CL-1 Closer FS-1 Floor Stop PT-1 Power Transfer Hinge (Only Doors 106 & 137 For Future) <p>HARDWARE GROUP #10 (Interior, Wood, Office/Conf., Access Controlled):</p> <ul style="list-style-type: none"> HN-2 Hinges LK-2 Lockset: Office/Entry ES-1 Electric Strike CL-1 Closer WS-1 Wall Stop PT-1 Power Transfer Hinge (Door 130 Only) CR-1 Card Reader <p>HARDWARE GROUP #11 (Interior, Hollow Metal, or Wood):</p> <ul style="list-style-type: none"> HN-2 Hinges LK-5 Lockset: Institution FS-1 Floor Stop WS-1 Wall Stop (Door 206.1 only) <p>HARDWARE GROUP #12 (Interior, Specialty Doors):</p> <p>Manufacturer standard hardware kit/set for specific system. Finish to be selected by Arch/ID.</p> <p>Hardware Group #13 (Post Office Door):</p> <ul style="list-style-type: none"> HN-2 Hinges LK-6 Lockset: Passage WS-1 Wall Stop CL-1 Closer <p>Hardware Group #14 (Post Office Door):</p> <ul style="list-style-type: none"> HN-3 Hinges LK-7 Lockset: Entrance (mortised) FS-1 Floor Stop CL-1 Closer TH-2 Threshold BS-1 Bottom Shoe DG-1 Door Gasketing SV-1 Security Viewer | <p>HARDWARE GROUP #1 (Exterior, Aluminum Storefront, Entrance, Access Control):</p> <ul style="list-style-type: none"> HN-1 Hinges PT-1 Power Transfer Hinge (Electrified) RD-1 Rim Exit Device KC-1 Key Cylinder FP-1 Pull Bars CL-1 Closer TH-1 Threshold(ADA) DG-1 Door Gasketing CR-1 Card Reader <p>HARDWARE GROUP #2 (Exterior, Hollow Metal, Utility):</p> <ul style="list-style-type: none"> HN-2 Hinges RD-2 Rim Exit Device LK-1 Lockset: Storeroom CL-1 Closer TH-2 Threshold(ADA) SB-1 Surface Bolts (Top & Bottom of Inactive Leaf) DG-1 Door Gasketing <p>HARDWARE GROUP #3 (Exterior, Hollow Metal, Stairs, Access Control):</p> <ul style="list-style-type: none"> HN-2 Hinges RD-2 Rim Exit Device LK-2 Lockset: Office/Entry ES-1 Electric Strike CL-1 Closer TH-3 Threshold(ADA) WS-1 Wall Stop FS-1 Floor Stop (Only Doors 104 & 104.1) CR-1 Card Reader <p>HARDWARE GROUP #4 (Interior, Hollow Metal, Stairs, Access Controlled):</p> <ul style="list-style-type: none"> HN-2 Hinges RD-2 Rim Exit Device LK-2 Lockset: Office/Entry ES-1 Electric Strike CL-1 Closer TH-3 Threshold(ADA) WS-1 Wall Stop FS-1 Floor Stop (Only Doors 104 & 104.1) CR-1 Card Reader <p>HARDWARE GROUP #5 (Interior, Wood, Office/Conf.):</p> <ul style="list-style-type: none"> HN-2 Hinges LK-2 Lockset: Office/Entry WS-1 Wall Stop FS-1 Floor Stop (Door 139,220,1,226,226.1) <p>HARDWARE GROUP #6.1 (Interior, Hollow Metal, Storage):</p> <ul style="list-style-type: none"> HN-2 Hinges LK-1 Lockset: Storeroom WS-1 Wall Stop OS-1 Overhead Stop (Only Doors 216 & 217) CL-1 Closer <p>HARDWARE GROUP #7 (Interior, Wood, Restrooms):</p> <ul style="list-style-type: none"> HN-2 Hinges KC-1 Key Cylinder FP-1 Push-Pull Set WS-1 Wall Stop CL-1 Closer <p>HARDWARE GROUP #8 (Interior, Wood, Restrooms):</p> <ul style="list-style-type: none"> HN-2 Hinges LK-4 Lockset: Privacy WS-1 Wall Stop OS-1 Overhead Stop (Door 121, 122 Only) CL-1 Closer (Door 119, 121, 122, 148 Only) DB-1 Occupancy Indicator Dead Bolt (Door 119, 121, 122, 148 Only) <p>HARDWARE GROUP #9 (Interior, Wood, Entry/Egress):</p> <ul style="list-style-type: none"> HN-2 Hinges RD-2 Rim Exit Device LK-2 Lockset: Office/Entry CL-1 Closer FS-1 Floor Stop PT-1 Power Transfer Hinge (Only Doors 106 & 137 For Future) <p>HARDWARE GROUP #10 (Interior, Wood, Office/Conf., Access Controlled):</p> <ul style="list-style-type: none"> HN-2 Hinges LK-2 Lockset: Office/Entry ES-1 Electric Strike CL-1 Closer WS-1 Wall Stop PT-1 Power Transfer Hinge (Door 130 Only) CR-1 Card Reader <p>HARDWARE GROUP #11 (Interior, Hollow Metal, or Wood):</p> <ul style="list-style-type: none"> HN-2 Hinges LK-5 Lockset: Institution FS-1 Floor Stop WS-1 Wall Stop (Door 206.1 only) <p>HARDWARE GROUP #12 (Interior, Specialty Doors):</p> <p>Manufacturer standard hardware kit/set for specific system. Finish to be selected by Arch/ID.</p> <p>Hardware Group #13 (Post Office Door):</p> <ul style="list-style-type: none"> HN-2 Hinges LK-6 Lockset: Passage WS-1 Wall Stop CL-1 Closer <p>Hardware Group #14 (Post Office Door):</p> <ul style="list-style-type: none"> HN-3 Hinges LK-7 Lockset: Entrance (mortised) FS-1 Floor Stop CL-1 Closer TH-2 Threshold BS-1 Bottom Shoe DG-1 Door Gasketing SV-1 Security Viewer |
|--|--|

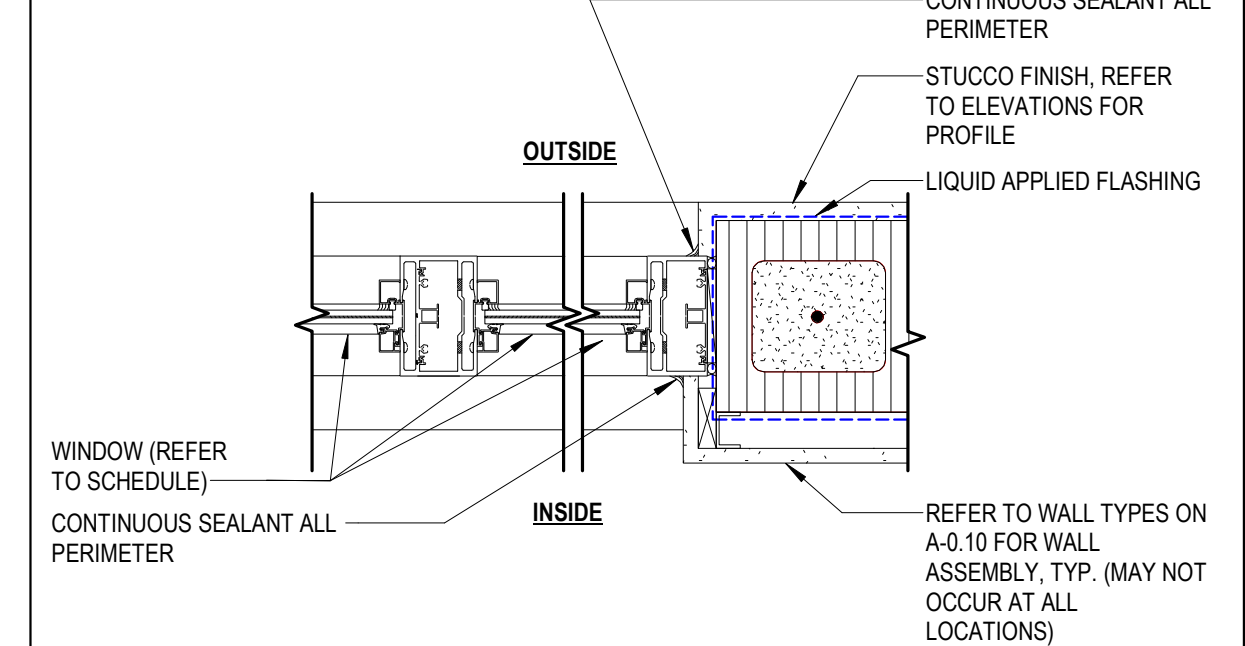
Note: All doors in hollow metal frames to be provided with a min. of 3 silencers (SR-1, SV-1)



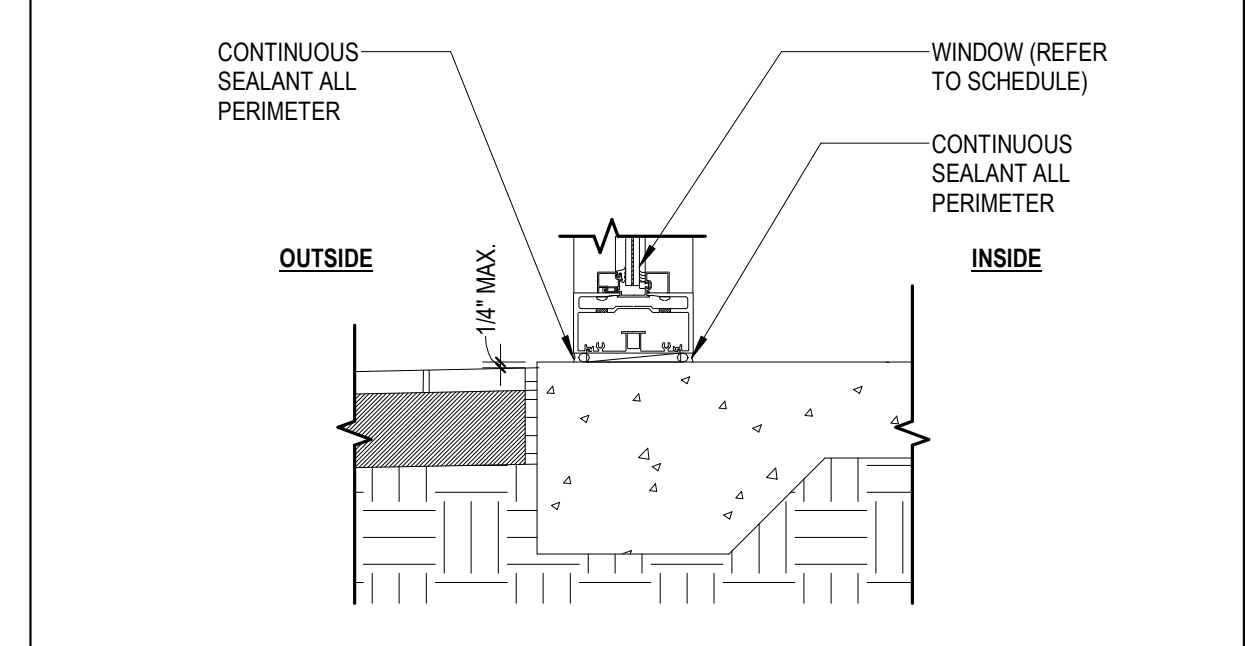
STOREFRONT WINDOW SILL 9
1 1/2" = 1'-0"



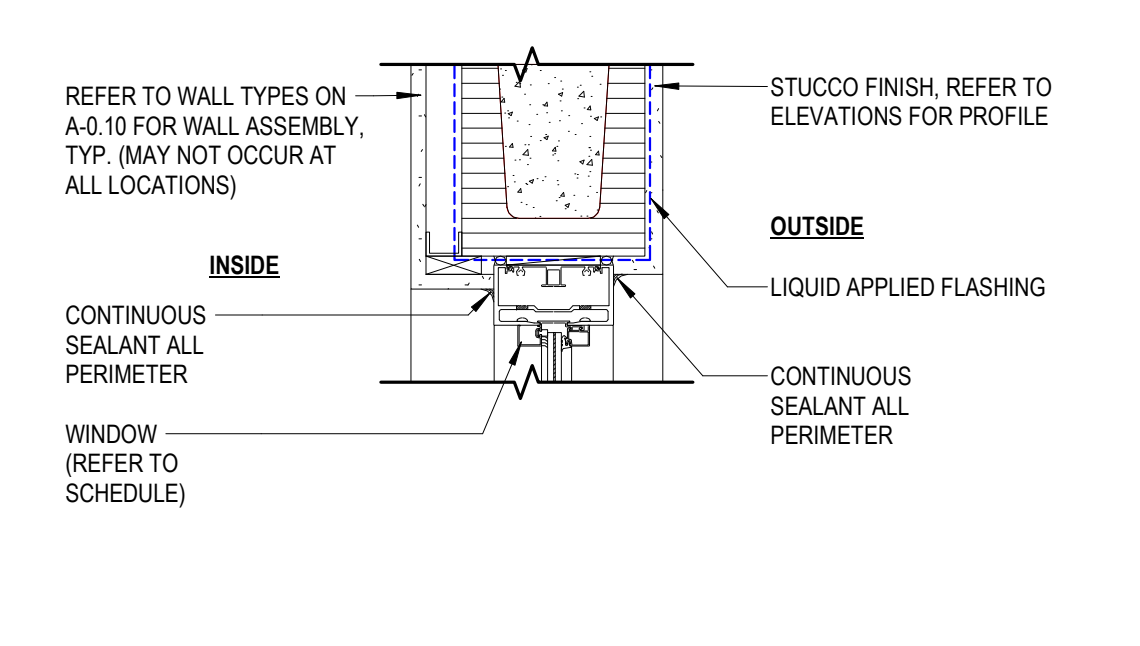
STOREFRONT WINDOW HEAD 8
1 1/2" = 1'-0"



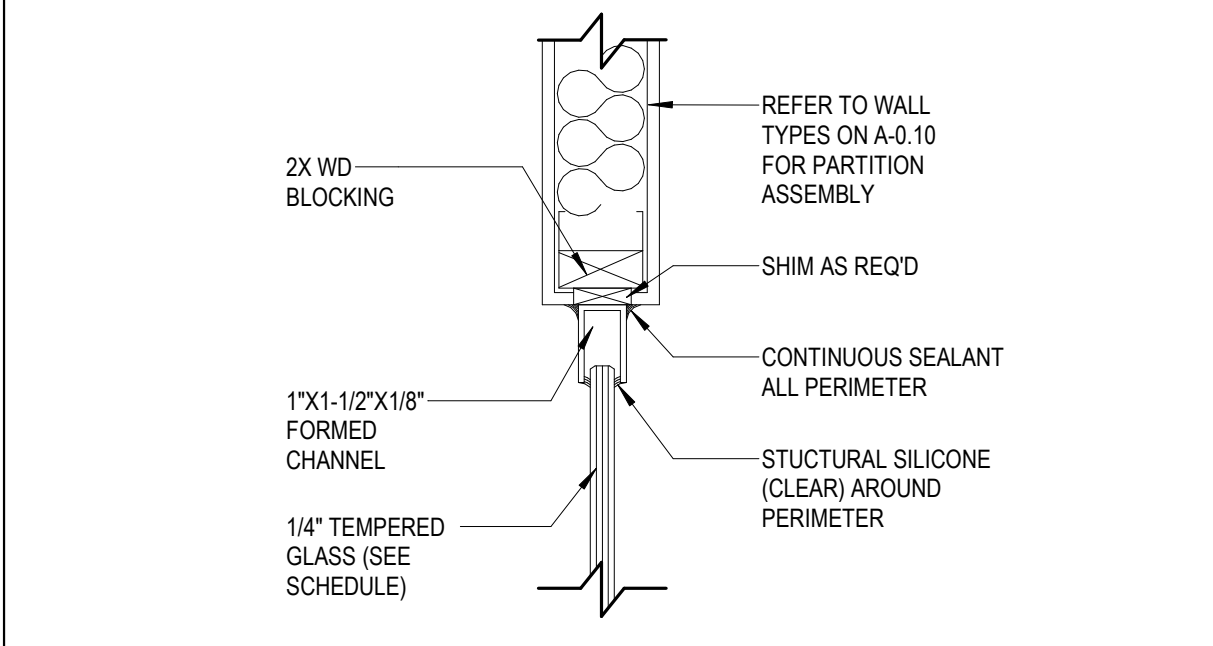
STOREFRONT WINDOW JAMB 7
1 1/2" = 1'-0"



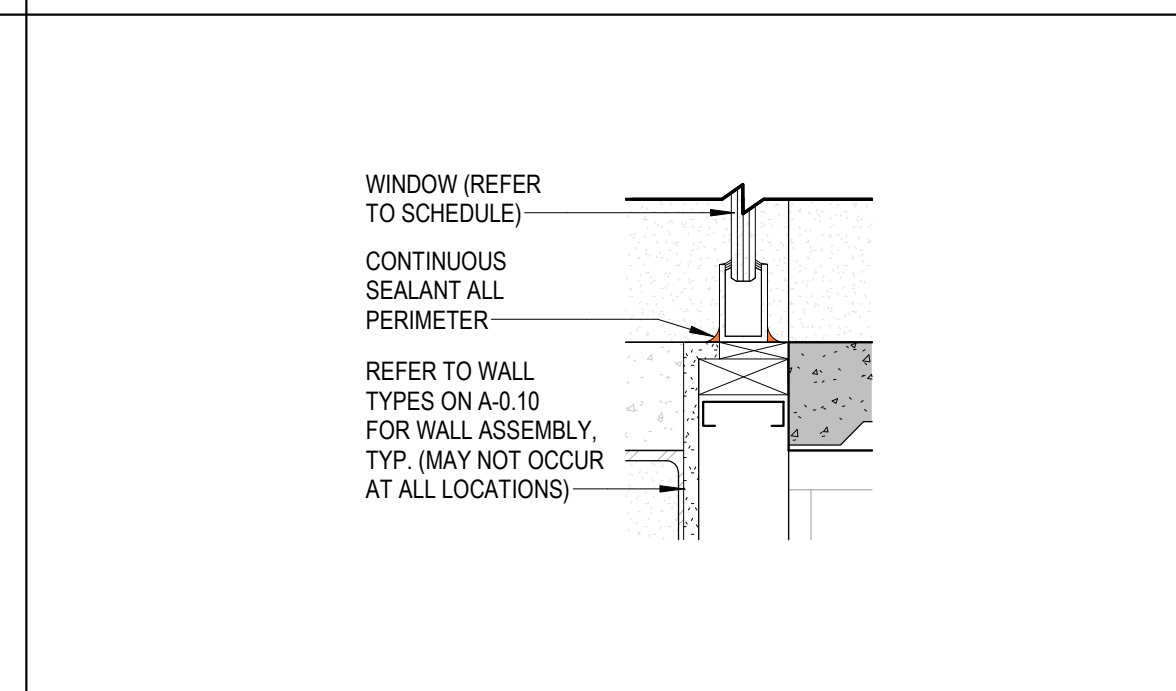
STOREFRONT WINDOW SILL 6
1 1/2" = 1'-0"



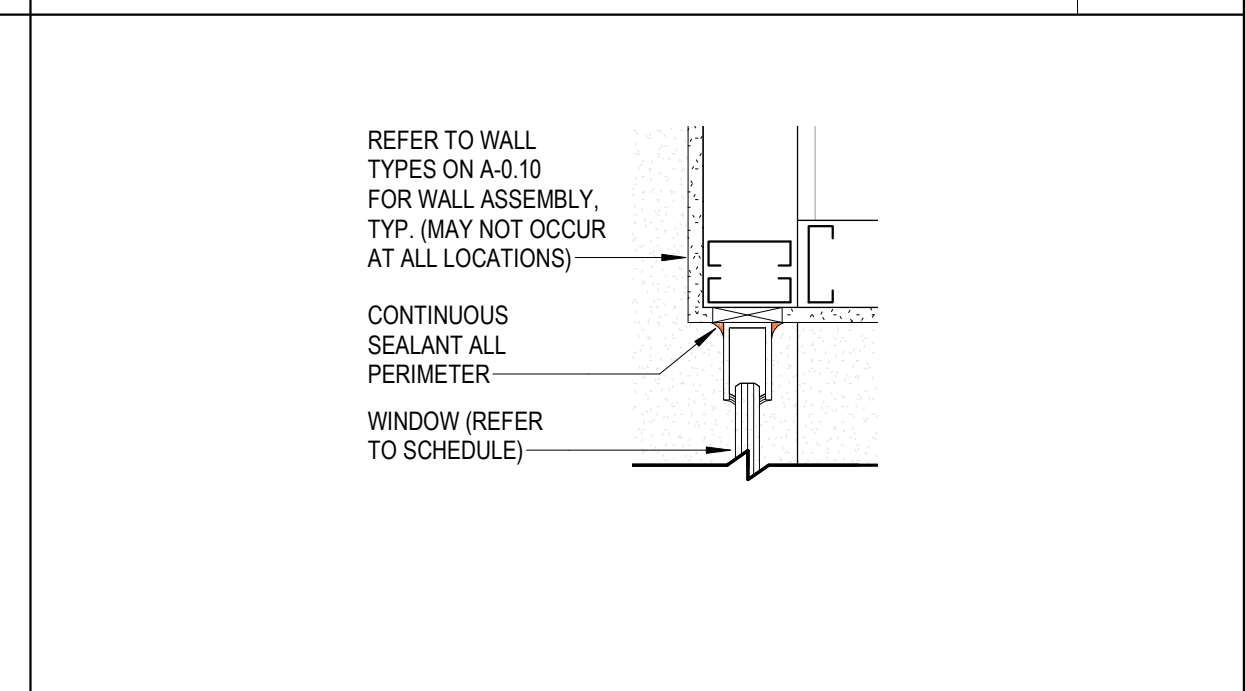
STOREFRONT WINDOW HEAD 4
1 1/2" = 1'-0"



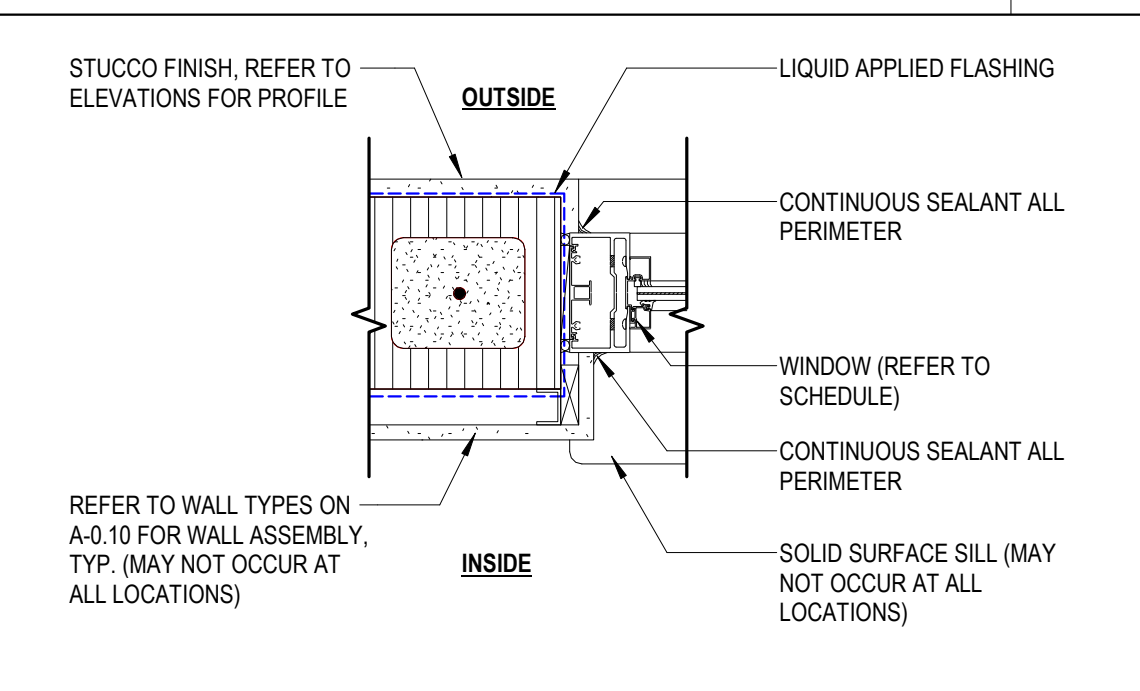
INT. WINDOW HEAD & JAMB 2
1 1/2" = 1'-0"



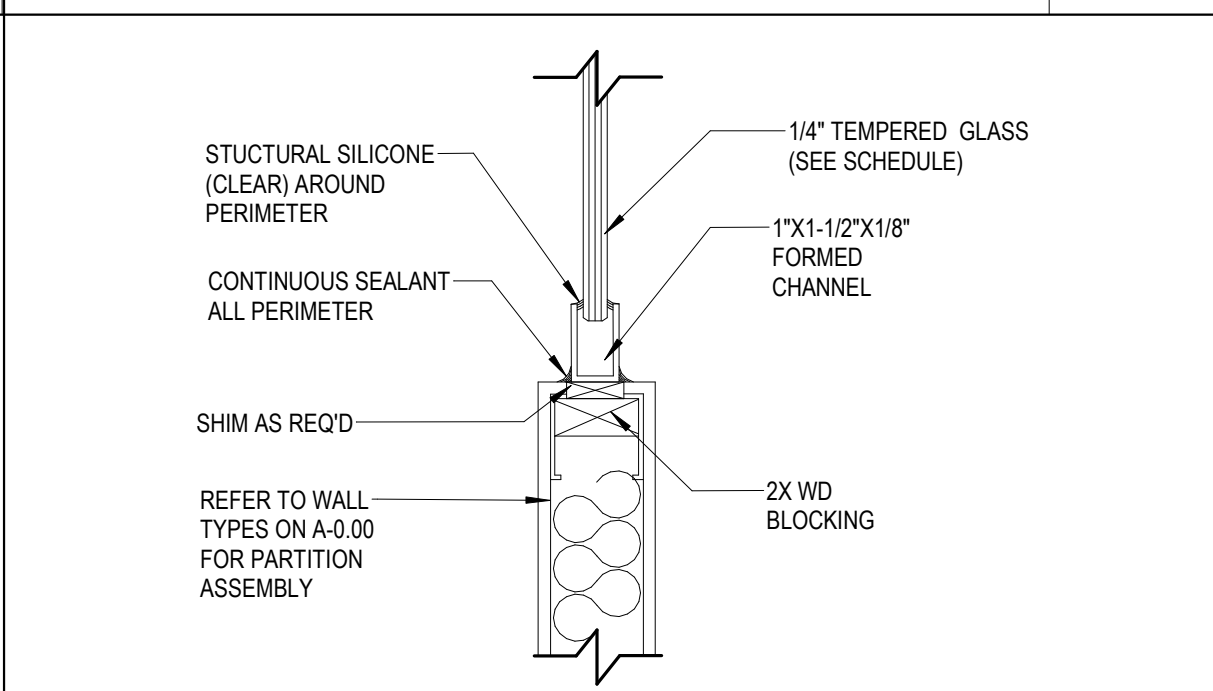
SILL DETAIL - WINDOW @ CONF. RM. 220 10
1 1/2" = 1'-0"



HEAD DETAIL - WINDOW @ CONF. RM. 220 5
1 1/2" = 1'-0"



STOREFRONT WINDOW JAMB 3
1 1/2" = 1'-0"



INT. WINDOW SILL 1
1 1/2" = 1'-0"