



Village of
ROYAL PALM BEACH
Florida

Village Voice

Official Newsletter of the Village of Royal Palm Beach
October 2023

The Main Event



Rock-n-Fall Festival 2023 is almost here!

The Village of Royal Palm Beach is gearing up for an unforgettable Rock-n-Fall Festival, promising two days full of music, entertainment, and family-friendly fun. This annual event, scheduled October 6th & 7th, will once again be held at the one of a kind Commons Park in Royal Palm Beach.

[Click Here to Visit our Community Events Page](#)

Accepting Submissions through October 31, 2023



2023 "Picture a Place you Call Home" Photo Contest

Photo contest is open to residents, non-residents, Village employees, and photographers of all skill levels.

[Click here for Contest Rules and Photo Submissions](#)

News from PBSO District 9

Now that children are back in school:

PBSO REMINDS parents to:

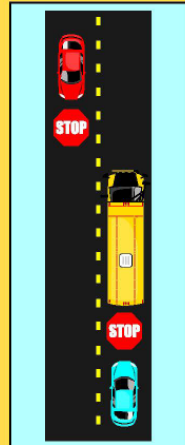
- Obey traffic laws when passing bus stops, driving through neighborhoods and school zones
- Watch for pedestrians and bicycles
- DO NOT let your children out of the car while you are stopped in traffic – it is unsafe and can lead to a tragedy
- Be patient, be vigilant and allow extra time for your morning commute
- Getting your kids to and from school safely is our priority and we ask that it be yours, too

Stop on Red, Kids Ahead

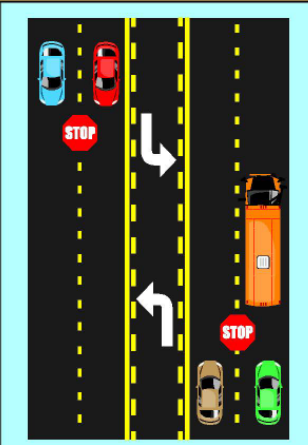
FloridaSchoolBusSafety.gov



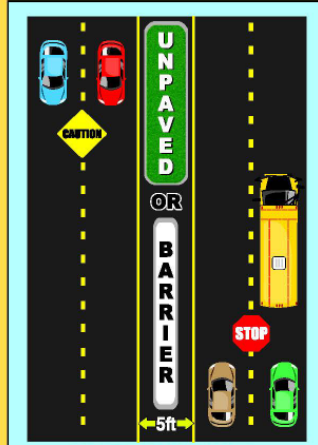
WHAT TO DO WHEN APPROACHING A STOPPED SCHOOL BUS



TWO-LANE:
Vehicles traveling in both directions MUST stop



MULTI-LANE Paved Across:
Vehicles traveling in both directions MUST stop



DIVIDED HIGHWAY
Unpaved space (Min 5 ft) OR any raised median/physical barrier.
Vehicles behind bus MUST stop.
Vehicles traveling in the opposite direction proceed with caution.



Passing a stopped school bus carries a fine of \$271 and a penalty of four points on your driver's license.



Parks & Recreation

October Means the Return of the Green Market

RPBGreenMarket.com



ROYAL PALM BEACH
GREEN
MARKET **AND**
BAZAAR

October
14th 2023
through
April 27th
2024

LAKESIDE AT VILLAGE HALL OPEN SATURDAYS FROM 9 TO 1

Corner of Okeechobee & Royal Palm Beach Blvd.



(561) 792-9260

Fresh Produce *Fresh Fish* *Plants & Trees*
Vegan & Organic Foods *Baked Goods* *Coffee*
Food Vendors *Cheese* *Clothing & Jewelry*
Candles & Soaps *CBD* *Artwork* *Pet Friendly*

Open Rain or Shine

Join us for our Veterans Day Ceremony Next Month



[Click Here for Ceremony Details](#)

Senior Programs

Young at Heart Club

Registration for the 2023-2024 is open
through October 20th

Luncheon: Friday, October 6
Theme: Wear Black & Orange
Entertainment: Iris Revson, Shangri-Las
Entrée: Chicken Parmesan

Business Breakfast:
Wednesday, October 18



[Click Here for Registration Details](#)

Virtual Museum Tour

The Jewish Museum
Date: 10/27/2023
Time: 10:30am - 11:30am
Location: Recreation Center

Walk With Ease

The Arthritis Foundation's
Walk with Ease Program is a
community based physical
activity and self-
management education
program.

AARP Smart Driver

Become a safer & more
confident driver!
Date: 10/31/2023
Time: 9:00am-3:00pm
Location: Recreation Center
Member Fee: \$20
Non-Member: \$25

[Event Flyer](#)

[Click for More
Informaion](#)

[Click for More
Information](#)

Finance Updates



We are happy to announce the Village Council approved the FY 2024 budget on September 21, 2023 in the amount of \$87,286,617. Click the link below to view the full budget document.

[2024 Budget](#)

Engineering Updates



Village of ROYAL PALM BEACH *Florida*

- 5.8 ACRE PUBLIC PARK
- 2 PAVILIONS
- RESTROOM FACILITY
- PLAYGROUND
- BEACH VOLLEYBALL COURT
- 2 TENNIS COURTS
- 2 PICKLEBALL COURTS
- 2 BASKETBALL COURTS
- SHADE STRUCTURES
- SEAWALL WALKWAY

Village Council

Fred Pinto Mayor
 Jan Rodusky Vice Mayor
 Jeff Hmara Councilman
 Selena Samios Councilwoman
 Richard Valuntas Councilman



Funded in part by a \$400,000 Land and Water Conservation Fund Grant from the Florida Department of Environmental Protection.

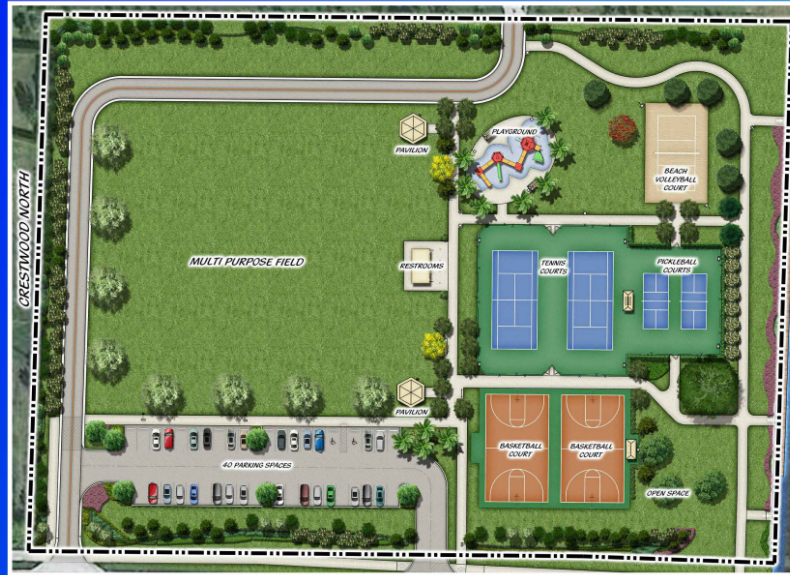
Remaining funding from Village of Royal Palm Beach Impact Fee Fund 301.

Scan this with your smart phone to see additional project details and contact information.



SCAN ME

Or visit
www.royalpalmbeachfl.gov/PR2102



PR2102 CRESTWOOD NORTH PARK

2023-2024



Village of ROYAL PALM BEACH *Florida*

Village Council

Fred Pinto Mayor
 Jan Rodusky Vice Mayor
 Jeff Hmara Councilman
 Selena Samios Councilwoman
 Richard Valuntas Councilman



Funding from Village of Royal Palm Beach General Capital Improvements Fund 303

Scan this with your smart phone to see additional project details and contact information.



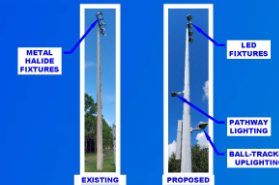
SCAN ME

Or visit
www.royalpalmbeachfl.gov/PR2303_PR2305



PR2305 Vivian A. Ferrin Memorial Park Field Lighting Replacement

2023-2024



LED SPORTS LIGHTING HAS A NUMBER OF ADVANTAGES OVER THE EXISTING METAL HALIDE SPORTS LIGHTING, INCLUDING:

- **LONGER LIFESPAN:** LED LIGHTS CAN LAST UP TO 50,000 HOURS, WHILE METAL HALIDE LIGHTS TYPICALLY LAST ONLY 6,000-15,000 HOURS. THIS MEANS THAT LED LIGHTS NEED TO BE REPLACED LESS OFTEN, SAVING MONEY ON MAINTENANCE COSTS.
- **HIGHER ENERGY EFFICIENCY:** LED LIGHTS USE UP TO 75% LESS ENERGY THAN METAL HALIDE LIGHTS. THIS CAN LEAD TO SIGNIFICANT SAVINGS ON ENERGY BILLS, ESPECIALLY FOR FACILITIES THAT USE SPORTS LIGHTING FOR MANY HOURS EACH WEEK.
- **INSTANT ON/OFF:** LED LIGHTS TURN ON INSTANTLY, WHILE METAL HALIDE LIGHTS HAVE A WARM-UP PERIOD OF SEVERAL MINUTES. THIS CAN BE IMPORTANT FOR SPORTS FACILITIES THAT NEED TO BE ABLE TO TURN ON THE LIGHTS QUICKLY, SUCH AS FOR TOURNAMENTS OR OTHER EVENTS.
- **BETTER LIGHT QUALITY:** LED LIGHTS PRODUCE A MORE NATURAL AND UNIFORM LIGHT THAN METAL HALIDE LIGHTS. THIS CAN HELP IMPROVE THE VISIBILITY OF PLAYERS AND SPECTATORS.
- **LESS MAINTENANCE:** LED LIGHTS REQUIRE LESS MAINTENANCE THAN METAL HALIDE LIGHTS. THERE ARE NO BULBS TO REPLACE, AND THE FIXTURES ARE LESS LIKELY TO OVERHEAT.
- **INCREASED COMFORT:** LED LIGHTS CAN BE DIMMED AND CONTROLLED. BUILT-IN SHIELDING CUTS GLARE TO ADJACENT AREAS.
- **MORE ENVIRONMENTALLY FRIENDLY:** LED LIGHTS PRODUCE LESS HEAT AND CO2 EMISSIONS. THE LONGER LIFESPAN AND INCREASED EFFICIENCY MEANS LESS POLLUTION AND WASTE.

LED SPORTS LIGHTING IS A MORE COST-EFFECTIVE, ENERGY-EFFICIENT, AND ENVIRONMENTALLY FRIENDLY OPTION THAN METAL HALIDE SPORTS LIGHTING.



Village of ROYAL PALM BEACH *Florida*

Village Council

Fred Pinto	Mayor
Jan Rodusky	Vice Mayor
Jeff Hmara	Councilman
Selena Samios	Councilwoman
Richard Valuntas	Councilman



Funding from Village of Royal Palm Beach
General Capital Improvements Fund 303

Scan this with your smart phone to see
additional project details and contact information.



SCAN ME

Or visit
www.royalpalmbeachfl.gov/PR2303_PR2305



PR2303 Commons Park Golf Lighting Replacement
2023-2024

METAL
HALIDE
FIXTURES

EXISTING

LED
FIXTURES

PROPOSED

LED SPORTS LIGHTING HAS A NUMBER OF ADVANTAGES OVER THE EXISTING METAL HALIDE SPORTS LIGHTING, INCLUDING:

- **LONGER LIFESPAN:** LED LIGHTS CAN LAST UP TO 50,000 HOURS, WHILE METAL HALIDE LIGHTS TYPICALLY LAST ONLY 6,000-15,000 HOURS. THIS MEANS THAT LED LIGHTS NEED TO BE REPLACED LESS OFTEN, SAVING MONEY ON MAINTENANCE COSTS.
- **HIGHER ENERGY EFFICIENCY:** LED LIGHTS USE UP TO 75% LESS ENERGY THAN METAL HALIDE LIGHTS. THIS CAN LEAD TO SIGNIFICANT SAVINGS ON ENERGY BILLS, ESPECIALLY FOR FACILITIES THAT USE SPORTS LIGHTING FOR MANY HOURS EACH WEEK.
- **INSTANT ON/OFF:** LED LIGHTS TURN ON INSTANTLY, WHILE METAL HALIDE LIGHTS HAVE A WARM-UP PERIOD OF SEVERAL MINUTES. THIS CAN BE IMPORTANT FOR SPORTS FACILITIES THAT NEED TO BE ABLE TO TURN ON THE LIGHTS QUICKLY, SUCH AS FOR TOURNAMENTS OR OTHER EVENTS.
- **BETTER LIGHT QUALITY:** LED LIGHTS PRODUCE A MORE NATURAL AND UNIFORM LIGHT THAN METAL HALIDE LIGHTS. THIS CAN HELP IMPROVE THE VISIBILITY OF PLAYERS AND SPECTATORS.
- **LESS MAINTENANCE:** LED LIGHTS REQUIRE LESS MAINTENANCE THAN METAL HALIDE LIGHTS. THERE ARE NO BULBS TO REPLACE, AND THE FIXTURES ARE LESS LIKELY TO OVERHEAT.
- **INCREASED COMFORT:** LED LIGHTS CAN BE DIMMED AND CONTROLLED. BUILT-IN SHIELDING CUTS GLARE TO ADJACENT AREAS.
- **MORE ENVIRONMENTALLY FRIENDLY:** LED LIGHTS PRODUCE LESS HEAT AND CO₂ EMISSIONS. THE LONGER LIFESPAN AND INCREASED EFFICIENCY MEANS LESS POLLUTION AND WASTE.

LED SPORTS LIGHTING IS A MORE COST-EFFECTIVE, ENERGY-EFFICIENT, AND ENVIRONMENTALLY FRIENDLY OPTION THAN METAL HALIDE SPORTS LIGHTING.

Village of Royal Palm Beach
1050 Royal Palm Beach Boulevard
Royal Palm Beach, FL 33411

Phone: 561-790-5100
Fax: 561-790-5174
www.royalpalmbeachfl.gov